

SHEET NOTES:

- 1. REFER TO M-001 FOR MECHANICAL GENERAL NOTES AND DESIGN CRITERIA.
- 2. REFER TO M-002 FOR MECHANICAL ABBREVIATIONS AND LEGENDS.
- 3. FOR ALL HVAC UNITS, TRANSITION FROM FULL SIZE OF DUCT CONNECTION TO SIZES SHOWN ON DRAWINGS. SUPPLY PLENUMS ARE NOT ACCEPTABLE.

KEYNOTES

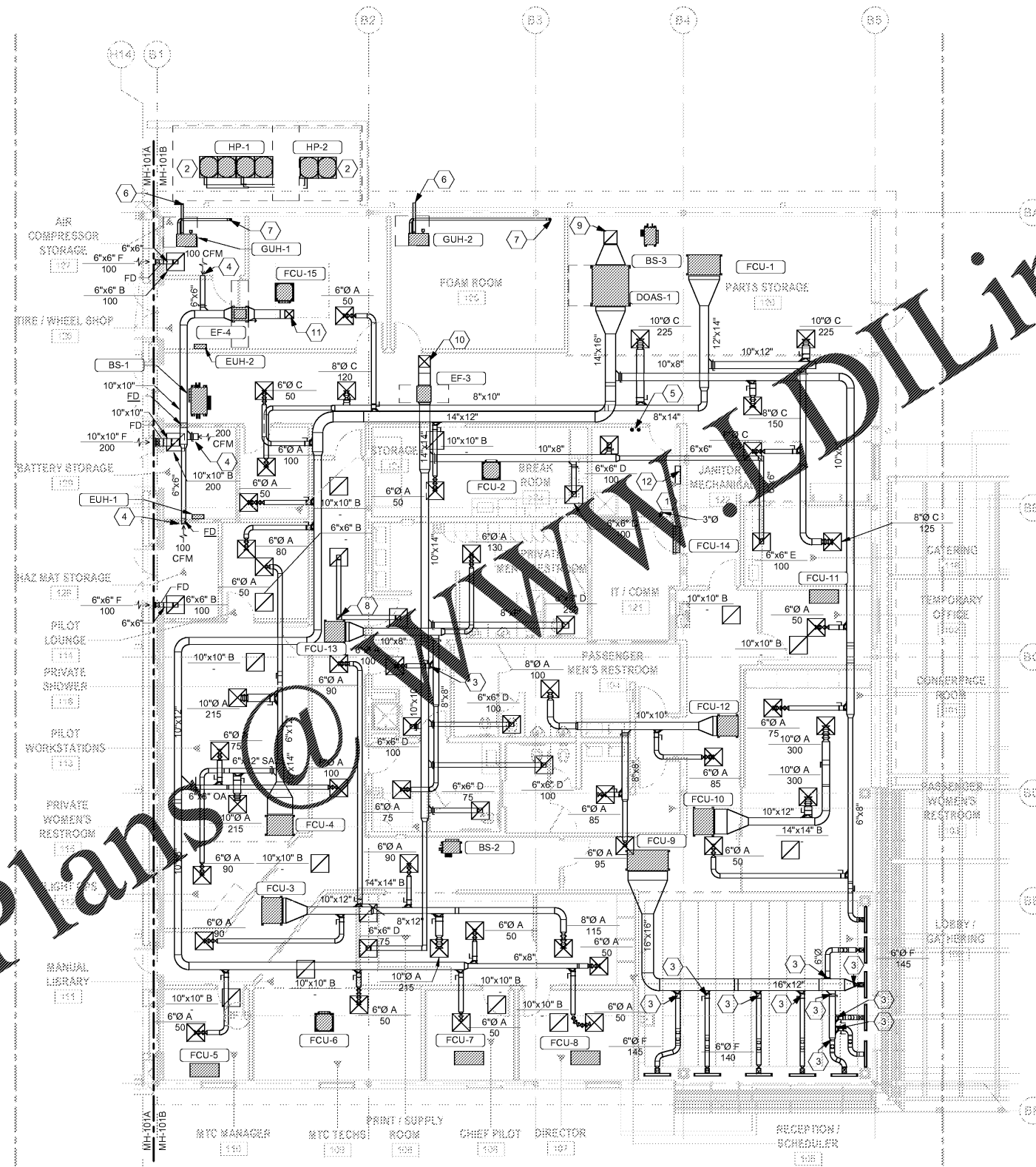
- 1 3"Ø VENT FOR GWH-1 UP THROUGH ROOF. VENT MATERIAL MUST COMPLY WITH MANUFACTURER'S LIST OF APPROVED MATERIALS.
- 2 PROVIDE EQUIPMENT PAD. SEE DETAIL D1/S-502.
- 3 PROVIDE REMOTE DAMPER OPERATOR.
- 4 TERMINATE DUCT WITH 1/2" X 1/2" BIRDSCREEN.
- 5 TWO 4"Ø COMBUSTION AIR DUCTS FOR GWH-1 UP THROUGH ROOF. TERMINATE ONE DUCT 12" AFF. TERMINATE ONE DUCT 12" BELOW CEILING. COVER BOTH ENDS WITH BIRDSCREEN. INSTALL VENTING SYSTEM PER MANUFACTURER'S REQUIREMENTS. PIPE MATERIAL MUST COMPLY WITH MANUFACTURER'S LIST OF APPROVED MATERIALS.
- 6 TERMINATE GAS UNIT HEATER VENT WITH MANUFACTURER'S VENT CAP. INSTALL PER MANUFACTURER'S REQUIREMENTS.
- 7 3"Ø COMBUSTION AIR DUCT FOR GAS UNIT HEATER UP THROUGH ROOF. INSTALL VENTING SYSTEM PER MANUFACTURER'S REQUIREMENTS.
- 8 6"x6" TRANSFER DUCT WITH TWO TYPE B GRILLES.
- 9 18"x18" OUTSIDE AIR DUCT DOWN FROM RH-7.
- 10 16"x16" EXHAUST AIR UP TO RH-5.
- 11 12"x12" EXHAUST AIR UP TO RH-6.
- 12 CENTRAL CONTROLLER BASIS OF DESIGN: TRANE AE-200A.

D

C

B

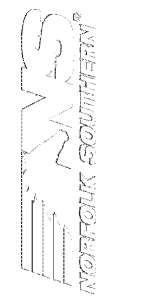
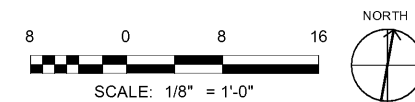
A



Order Plans @ [www.dlLine.com](http://www.dlLine.com)

A2 FIRST FLOOR HVAC PLAN - OFFICE

SCALE: 1/8" = 1'-0"



MARK	DESCRIPTION	DATE

DESIGNED BY: DRAWN BY: CHECKED BY: SUBMITTED BY: ISSUED FOR CONSTRUCTION:	DATE: DATE: DATE: DATE: DATE:
NORFOLK SOUTHERN CORP 1200 PEACHTREE STREET, NE ATLANTA, GEORGIA 30309	
<b>POND</b> 3000 Peachtree Lane, Atlanta, GA 30305 Phone (404) 335-7740 Job No. 1185547	

CORPORATE AIRCRAFT HANGAR FOR NORFOLK SOUTHERN CORPORATION  
 FULTON COUNTY AIRPORT - BROWN FIELD (FTY)  
 382 AVIATION CIRCLE, SUITE 200  
 ATLANTA, GEORGIA 30338

FIRST FLOOR HVAC PLAN - OFFICE

SHEET ID  
MH101B