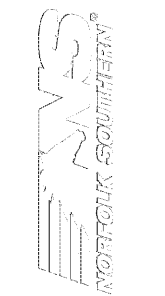
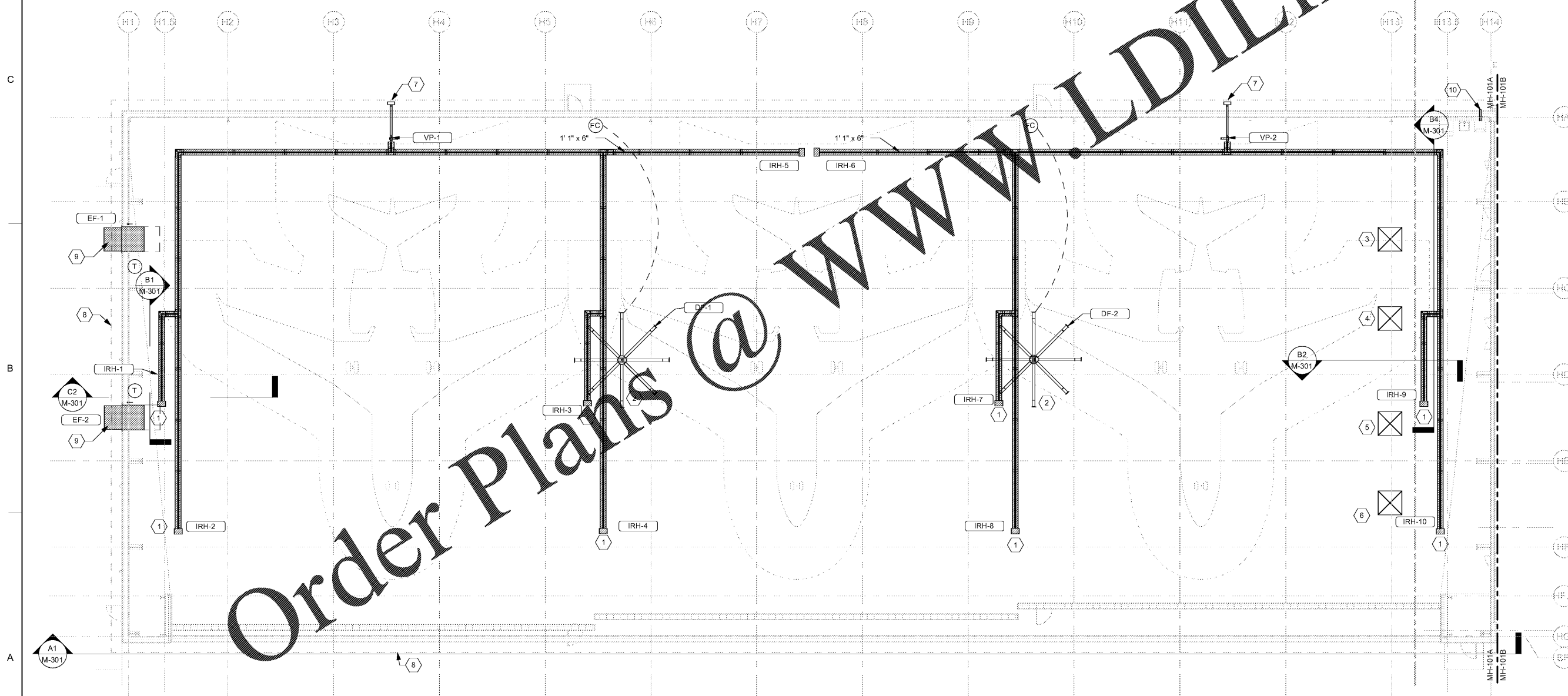


SHEET NOTES:

1. REFER TO M-001 FOR MECHANICAL GENERAL NOTES AND DESIGN CRITERIA.
2. REFER TO M-002 FOR MECHANICAL ABBREVIATIONS AND LEGENDS.

KEYNOTES

1. BOTTOM OF HEATERS TO BE 27" A.F.F. CONTRACTOR TO ENSURE ALL PIPING, CONDUIT, AND OTHER MATERIALS ARE INSTALLED IN COMPLIANCE WITH EQUIPMENT CLEARANCE REQUIREMENTS.
2. BOTTOM OF FAN TO BE INSTALLED 29" A.F.F. AND IN COMPLIANCE WITH HEATER CLEARANCE REQUIREMENT.
3. 54"x54" DUCT UP TO RH-1. TERMINATE WITH 1/2"x1/2" WIRE MESH.
4. 54"x54" DUCT UP TO RH-2. TERMINATE WITH 1/2"x1/2" WIRE MESH.
5. 54"x54" DUCT UP TO RH-3. TERMINATE WITH 1/2"x1/2" WIRE MESH.
6. 54"x54" DUCT UP TO RH-4. TERMINATE WITH 1/2"x1/2" WIRE MESH.
7. 4"Ø VENT THROUGH WALL. TERMINATE WITH MANUFACTURER WALL VENT KIT.
8. SOFFIT OVER-HANG. SEE ARCHITECTURAL DRAWINGS FOR DETAIL.
9. COORDINATE EXACT LOCATION WITH ARCHITECTURAL DRAWINGS.
10. 4"Ø EXTERIOR DRYER VENT. COORDINATE PENETRATION ELEVATION WITH DRYER TITLE AND TERMINATE WITH VENT CAP. INSTALL PER MANUFACTURER'S REQUIREMENTS.



MARK	DESCRIPTION	DATE

DESIGNED BY:	JAN
DRAWN BY:	JAN
CHECKED BY:	JAN
SUBMITTED BY:	JAN
ISSUED FOR CONSTRUCTION:	15-JUL-2020

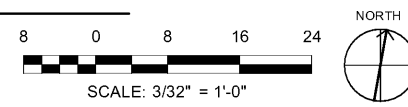
POND
 3000 Peachtree Lane, Suite 200
 Atlanta, Georgia 30309
 Phone (770) 335-7740
 Job No. 1185517

CORPORATE AIRCRAFT HANGAR FOR NORFOLK SOUTHERN CORPORATION
 FULTON COUNTY AIRPORT - BROWN FIELD (F1)
 3825 AVIATION CIRCLE, SUITE 200
 ATLANTA, GEORGIA 30336

FIRST FLOOR HVAC PLAN - HANGAR

SHEET ID
MH101A

A1 FIRST FLOOR HVAC PLAN - HANGAR
 SCALE: 3/32" = 1'-0"



7/10/2020 11:40:04 AM BIM 360//1190557 - Pegasus//1190557_Pegasus_NS_MEP_FP_v19.rvt