

1

2

3

4

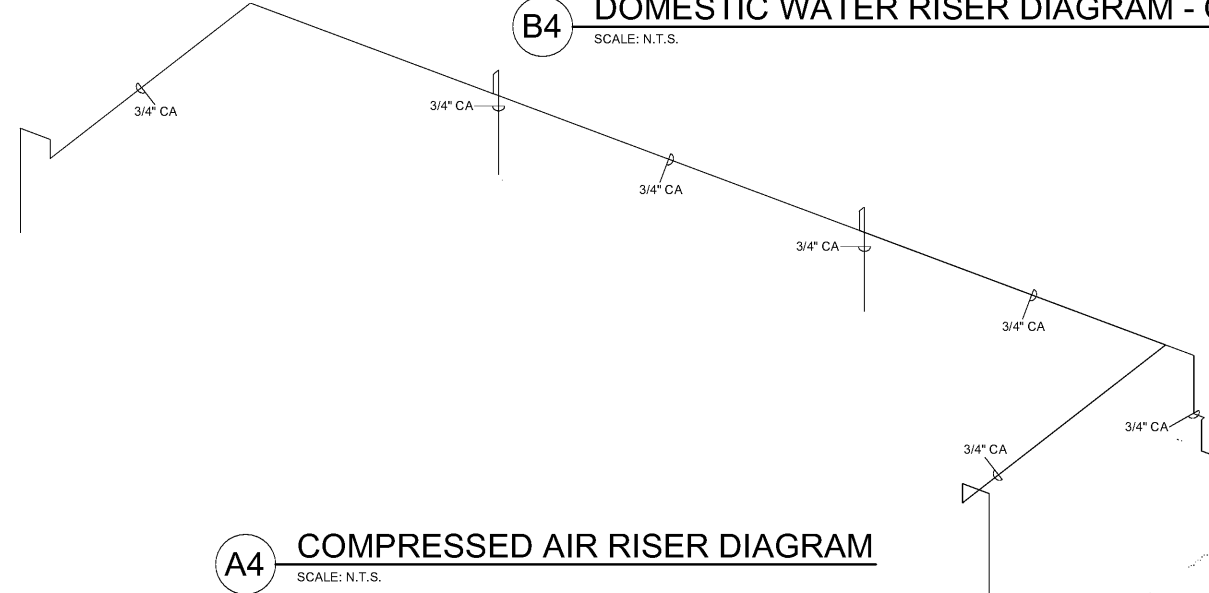
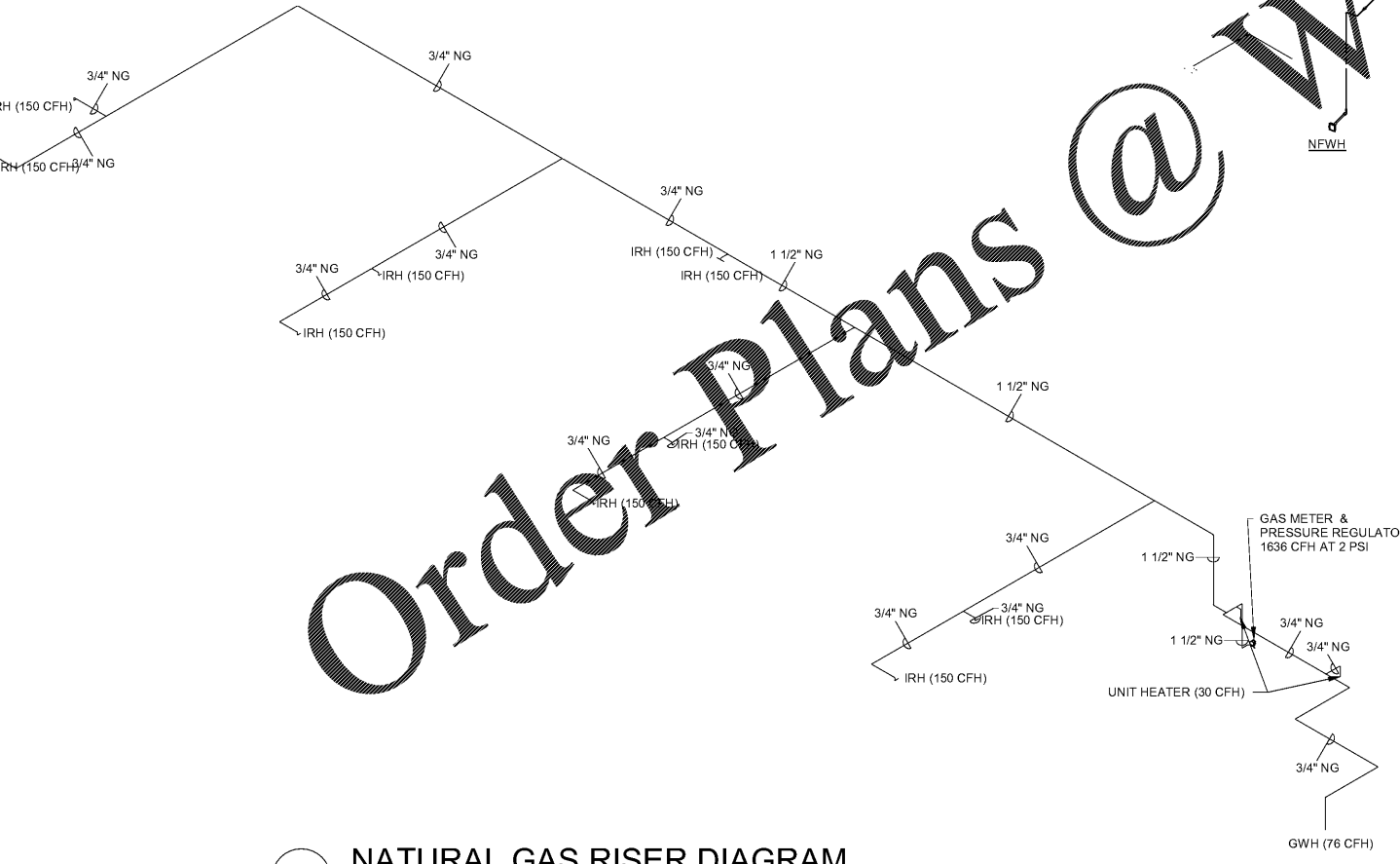
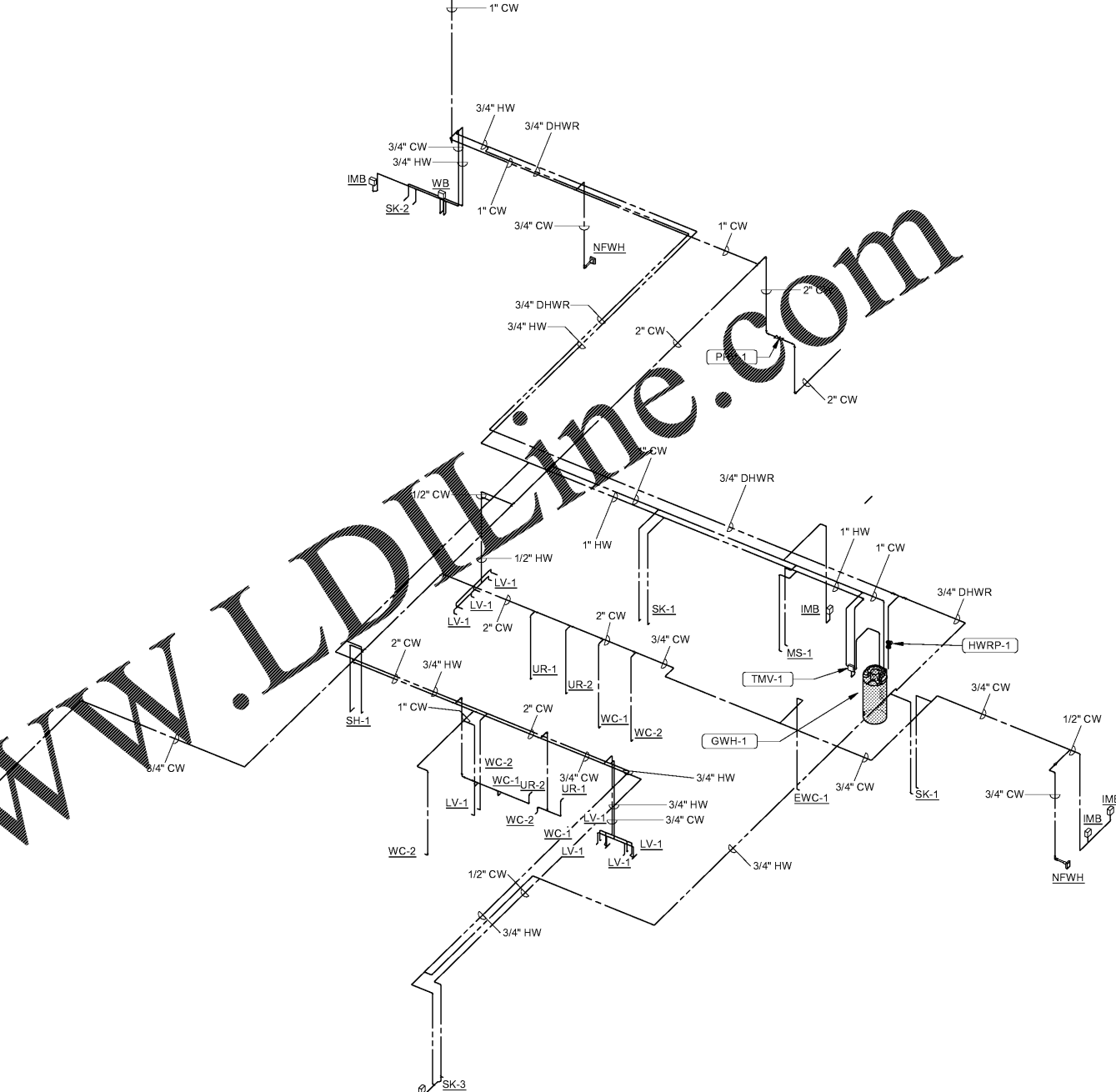
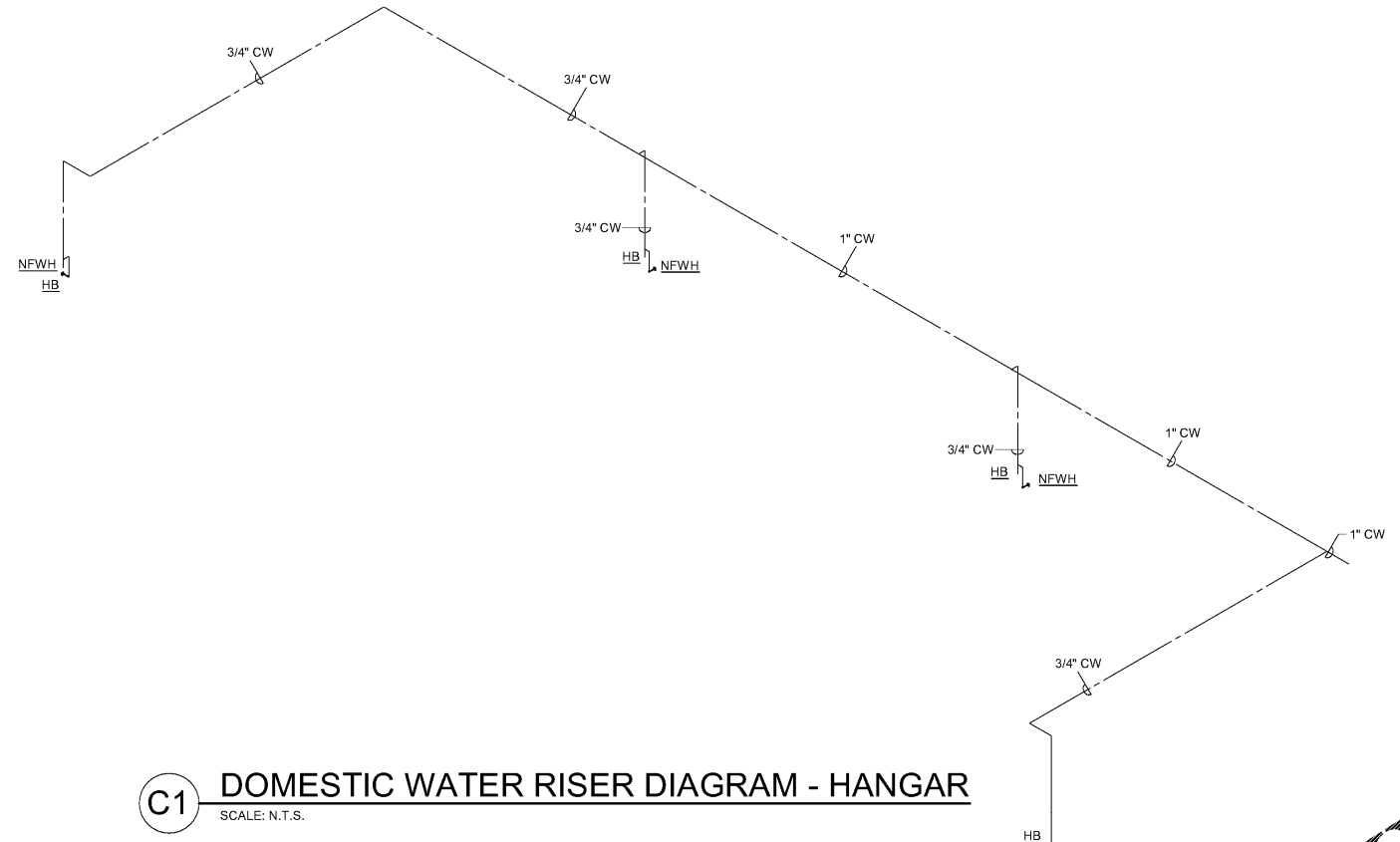
5

D

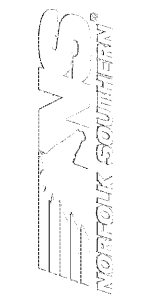
C

B

A



Order Plans @ [www.LDiline.com](http://www.LDiline.com)



MARK	DESCRIPTION	DATE

DESIGNED BY: [Blank]  
 DRAWN BY: [Blank]  
 CHECKED BY: [Blank]  
 SUBMITTED BY: [Blank]  
 ISSUED FOR CONSTRUCTION: [Blank]  
 15-JUL-2020

**POND**  
 NORFOLK SOUTHERN CORP  
 1200 PEACHTREE STREET, NE  
 ATLANTA, GEORGIA 30309  
 404-522-1000  
 3000 Peachtree Lane, Suite 200  
 Phone: (770) 335-7740  
 Fax: (770) 335-7740  
 Job No. 11855517

CORPORATE AIRCRAFT HANGAR FOR NORFOLK SOUTHERN CORPORATION  
 FULTON COUNTY AIRPORT - BROWN FIELD (FTY)  
 3622 AVIATION CIRCLE, SUITE 200  
 ATLANTA, GEORGIA 30336

**PLUMBING SUPPLY RISER DIAGRAMS**

SHEET ID  
**P-902**

7/9/2020 5:42:14 PM BIM 360://1190557 - Pegasus/1190557\_Pegasus\_NS\_MEP\_FP\_v19.rvt