

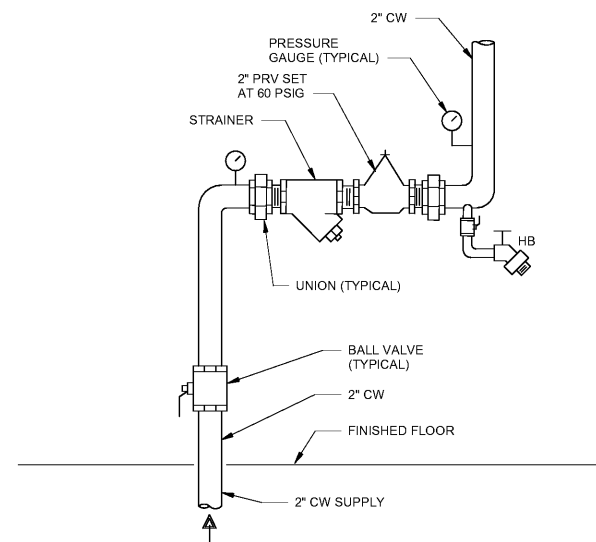
1

2

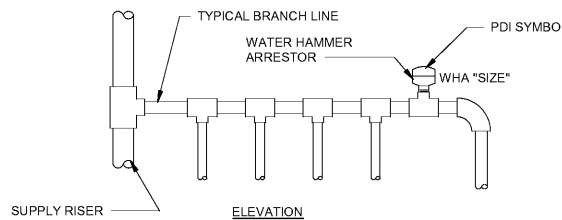
3

4

5



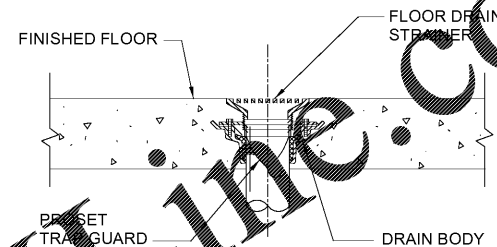
**C1 DOMESTIC WATER SERVICE DETAIL**  
SCALE: N.T.S.



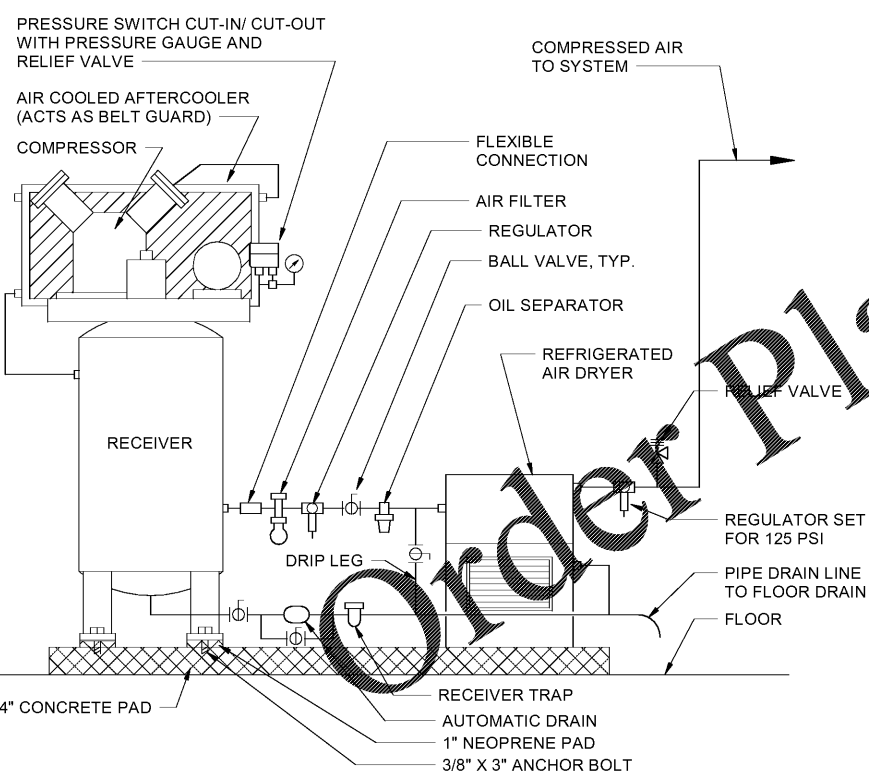
WATER HAMMER ARRESTOR SCHEDULE						
PDI SYMBOL	A	B	C	D	E	F
FIXTURE UNIT RATING	1-11	12-32	33-60	61-113	114-154	155-330

- NOTES:**
1. INSTALL WATER HAMMER ARRESTORS AT THE END OF BRANCH LINE BETWEEN THE LAST TWO FIXTURES SERVED.
  2. ONE WATER HAMMER ARRESTOR PER 20' LINE, AND ANOTHER FOR BRANCHES OVER 20' IN LENGTH.
  3. THE SUM OF FIXTURE UNIT RATING OF UNITS OVER 20' IN LENGTH SHALL BE EQUAL TO OR GREATER THAN THE DEMAND OF THE BRANCHES.

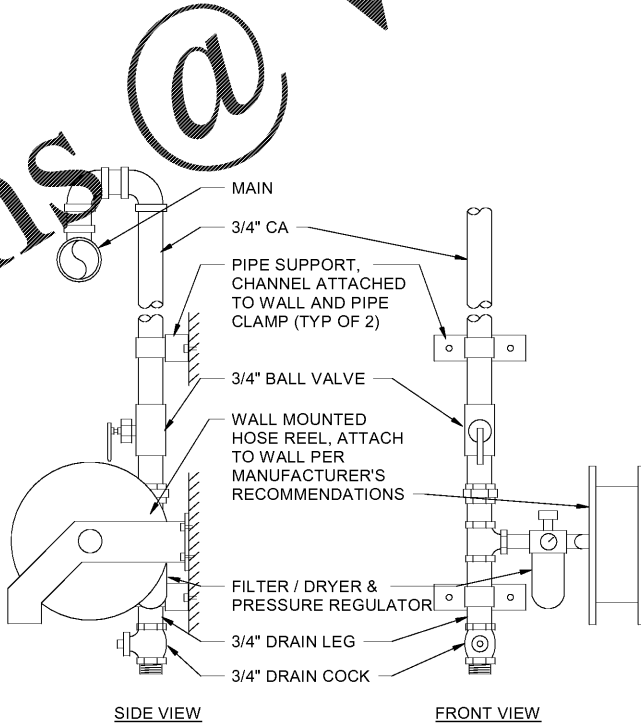
**C2 WATER HAMMER ARRESTOR DETAIL**  
SCALE: N.T.S.



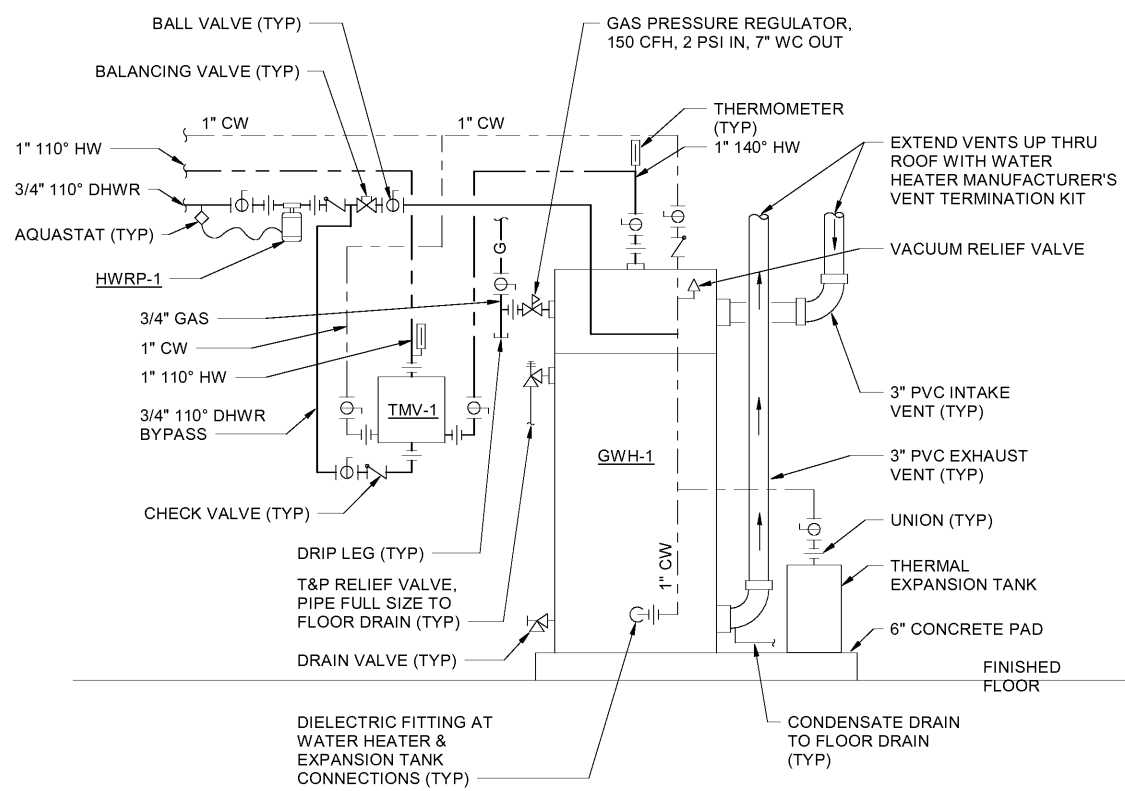
**C4 BARRIER TYPE TRAP SEAL PROTECTION**  
SCALE: N.T.S.



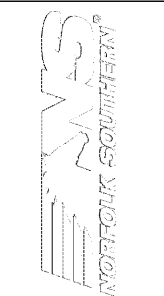
**A1 AIR COMPRESSOR DETAIL (AC-1)**  
SCALE: N.T.S.



**A2 COMPRESSED AIR DROP DETAIL**  
SCALE: N.T.S.



**A4 GAS WATER HEATER DETAIL**  
SCALE: N.T.S.



MARK	DESCRIPTION	DATE

DESIGNED BY: [Redacted]  
 DRAWN BY: [Redacted]  
 CHECKED BY: [Redacted]  
 SUBMITTED BY: [Redacted]  
 ISSUED FOR CONSTRUCTION: [Redacted]  
 DATE: 13-JUL-2020

**POND**  
 3000 Peachtree Lane, Suite 200  
 Atlanta, Georgia 30305  
 Phone (404) 335-7740  
 Fax (404) 335-7740  
 Job No. 1190557

CORPORATE ARCHITECT/HANGER FOR NORFOLK SOUTHERN CORPORATION  
 FULTON COUNTY AIRPORT - BROWN FIELD (FTY)  
 3525 AVIATION CIRCLE, SUITE 200  
 ATLANTA, GEORGIA 30335

**PLUMBING DETAILS**

SHEET ID  
**P-501**

BIM 360/1190557 - Pegasus/1190557\_Pegasus\_NS\_MEP\_FP\_v19.rvt  
 7/9/2020 5:41:59 PM