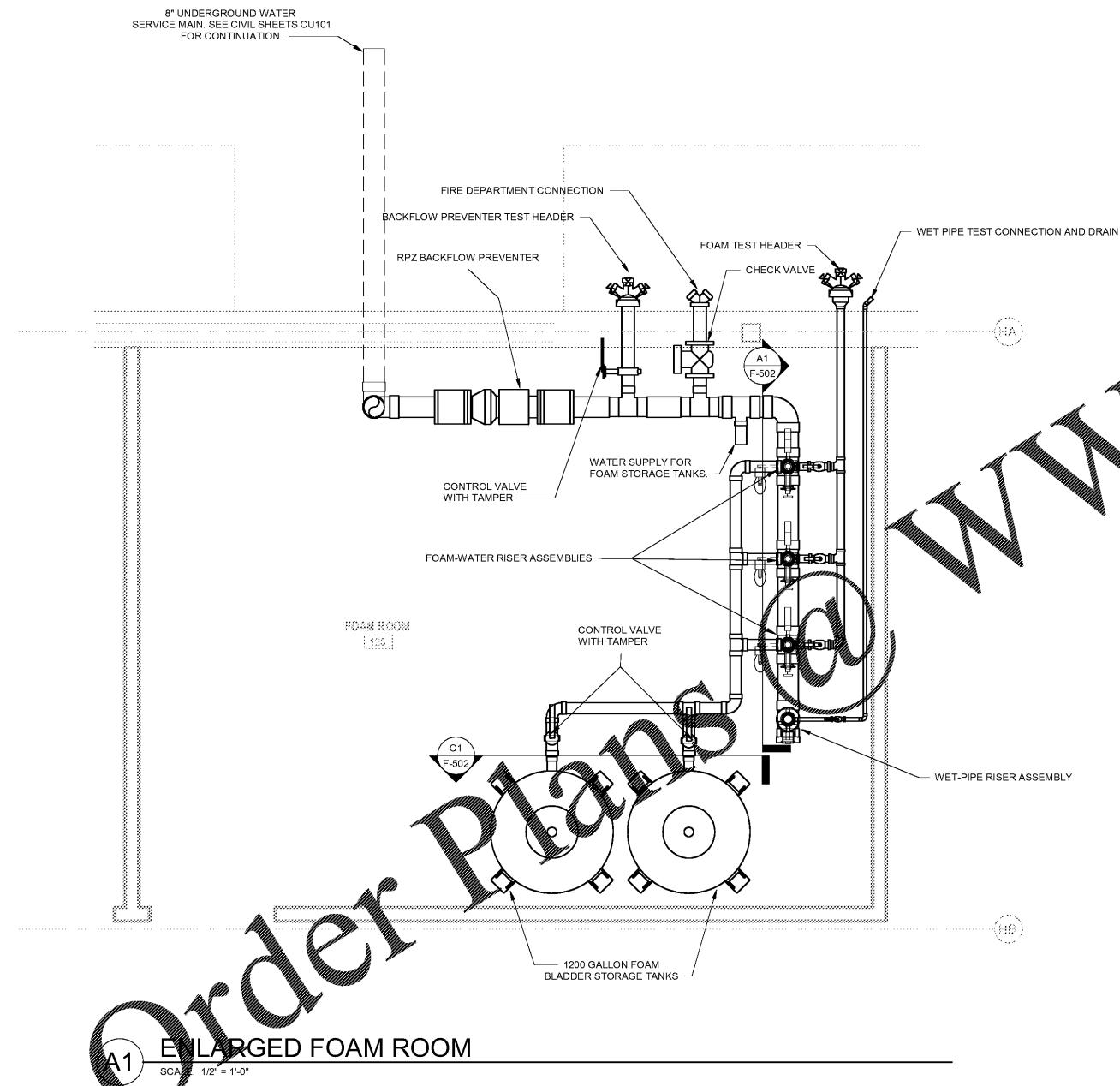


1 2 3 4 5

D
C
B
A



A1 ENLARGED FOAM ROOM
SCALE: 1/2" = 1'-0"

GENERAL NOTES

1. SEE SHEET F-001 FOR GENERAL NOTES AND LEGEND.
2. CONTRACTOR SHALL INSTALL A WET PIPE CLOSED-HEAD AFF SYSTEM AND AFF HANDLINES FOR A GROUP II HANGAR DESIGNED AND INSTALLED IN ACCORDANCE WITH NFPA 13, NFPA 14, NFPA 16, AND NFPA 409.
3. SPRINKLER CONTRACTOR SHALL PREPARE AND SUBMIT COMPLETE SHOP DRAWINGS WITH HYDRAULIC CALCULATIONS AND MATERIAL SPECIFICATION SHEETS FOR APPROVAL IN ACCORDANCE WITH THE PROJECT SPECIFICATION.
4. FIRE PROTECTION SYSTEM PIPING, FITTINGS, AND SIZES SHOWN ON THE DRAWINGS ARE DIAGRAMMATICAL IN NATURE AND ARE PROVIDED FOR ESTIMATING PURPOSES ONLY. THEY SHOULD NOT BE CONSIDERED REQUIREMENTS UNDER THIS CONTRACT. THE CONTRACTOR IS RESPONSIBLE FOR COORDINATING WITH OTHER TRADES AND ENSURING PROPER CLEARANCES ARE PROVIDED WHERE NECESSARY.
5. CONTRACTOR SHALL PROVIDE ALL NECESSARY AUXILIARY DRAINS AND INSPECTORS' TEST CONNECTIONS AS REQUIRED BY NFPA 13, NFPA 16, AND 409. INSPECTORS TEST CONNECTIONS SHALL BE LOCATED IN THE HANGAR BAY AND SHALL DISCHARGE TO A FLOOR CONTAINMENT DRAIN.
6. CONTRACTOR SHALL PROVIDE ALL NECESSARY PIPE HANGERS AND SUPPORTS AS REQUIRED BY NFPA 11,13,14, AND 16.
7. ALL VALVES CONTROLLING WATERFLOW OR FOAM CONCENTRATE TO THE SPRINKLER SYSTEM SHALL BE PROVIDED WITH TAMPER SWITCHES TO BE CONNECTED TO THE FIRE ALARM SYSTEM BY THE FIRE ALARM CONTRACTOR.
8. SPRINKLER SYSTEM(S) SHALL BE DESIGNED FOR A MAXIMUM WORKING PRESSURE OF 175 PSI PER NFPA 13.
9. ALL VALVES SHALL HAVE A PERMANENTLY AFFIXED SIGN PER NFPA 13 INDICATING ITS FUNCTION AND SECURED TO THE VALVE WITH SUITABLE CHAIN.
10. PROVIDE A PERMANENTLY ATTACHED HYDRAULIC NAMEPLATE FOR EACH SYSTEM RISER IN ACCORDANCE WITH NFPA 13, 14, AND 16.

WWW.LDILINE.COM



MARK	DESCRIPTION	DATE

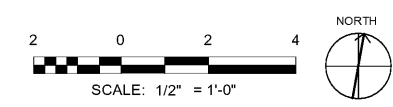
DESIGNED BY: BTH
 DRAWN BY: JAC
 CHECKED BY: MS
 SUBMITTED BY: MS
 APPROVED BY: [Signature]
 ISSUED FOR CONSTRUCTION: 12/13/2022

DESIGNER'S REPRESENTATIVE:
 NORFOLK SOUTHERN CORP.
 1200 PEACOCK STREET, NE
 ATLANTA, GEORGIA 30309
 POND & COMPANY
 385 AVIATION CIRCLE, SUITE 200
 ATLANTA, GEORGIA 30338
 POND & COMPANY
 385 AVIATION CIRCLE, SUITE 200
 ATLANTA, GEORGIA 30338
 LICENSE NO. 119297

CORPORATE AIRCRAFT HANGAR FOR NORFOLK SOUTHERN CORPORATION
 FULTON COUNTY AIRPORT - BROWN FIELD (FTY)
 385 AVIATION CIRCLE, SUITE 200
 ATLANTA, GEORGIA 30338

**FIRE PROTECTION ENLARGED
 FOAM ROOM**

SHEET ID
F-501



7/9/2020 9:39:35 AM BIM 360://1190557 - Pegasus/1190557_Pegasus_NS_MEP_FP_v19.rvt