

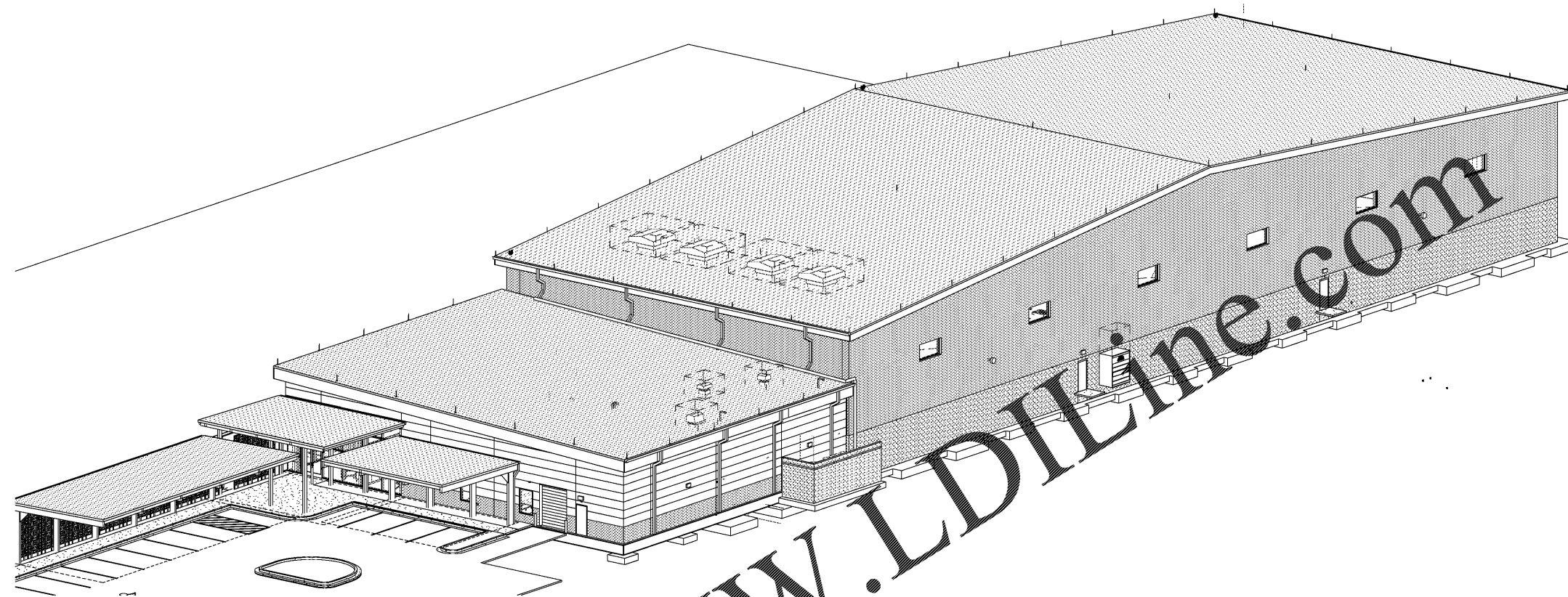
1 2 3 4 5

D

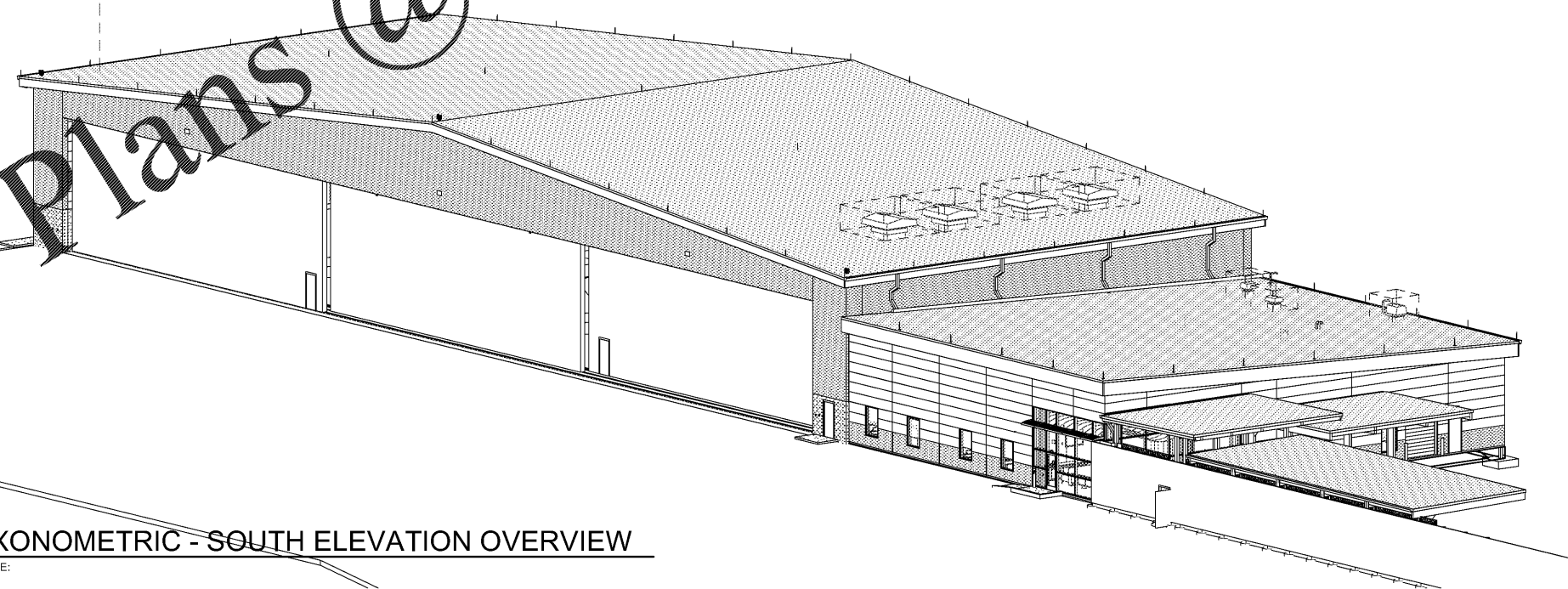
C

B

A



**C2** AXONOMETRIC - EAST ELEVATION OVERVIEW  
SCALE:



**A2** AXONOMETRIC - SOUTH ELEVATION OVERVIEW  
SCALE:

Order Plans @ [www.LDILine.com](http://www.LDILine.com)



MARK	DESCRIPTION	DATE

DESIGNED BY: E. Amis	CHECKED BY: K. Webb-Teke	ISSUED FOR CONSTRUCTION: DC-MM-YY
DATE:	DATE:	DATE:

NORFOLK SOUTHERN CORP  
1200 PEACHTREE STREET, NE  
ATLANTA, GEORGIA 30309  
404-529-1230  
POND  
3002 Parkway Lane, Suite 400  
Atlanta, Georgia 30328  
Phone: (770) 338-7740  
Fax: (770) 1185547

CORPORATE AIRCRAFT HANGAR FOR NORFOLK SOUTHERN CORPORATION  
FULTON COUNTY AIRPORT - BROWN FIELD (FTY)  
382 AVIATION CIRCLE, SUITE 200  
ATLANTA, GEORGIA 30338  
**OVERVIEW PERSPECTIVE**

SHEET ID  
**A-900**

7/10/2020 3:05:23 AM BIM 360//1190557 - Pegasus/1190557\_Pegasus\_NS\_Arch\_CENTRAL\_v19\_R3.rvt