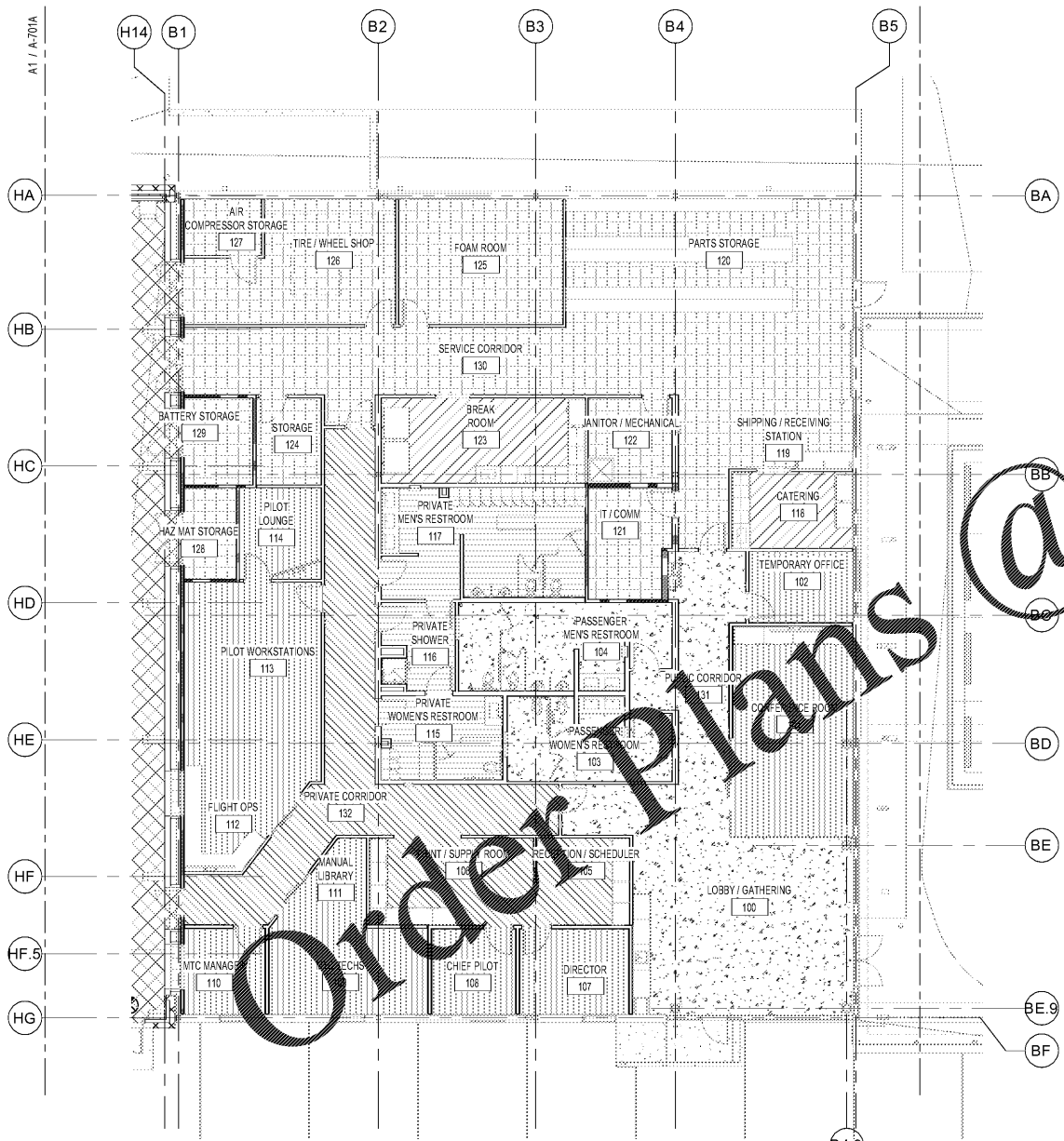
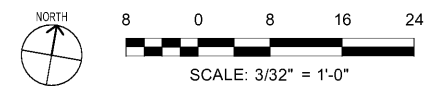


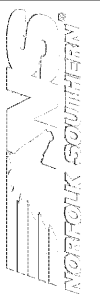
NOTE: SEE SHEET A-703 FOR FINISH SCHEDULE



A1 FINISH PLAN AREA B OFFICE
SCALE: 3/32" = 1'-0"



www.LDILine.com



MARK	DESCRIPTION	DATE

DESIGNED BY:
A. Amis
E. Amis
B. Amis
C. Amis
D. Amis
E. Amis

CHECKED BY:
K. Webb-Teague

SUBMITTED BY:
E. Amis

ISSUED FOR CONSTRUCTION:
DC-MM-YY

NORFOLK SOUTHERN CORP
1200 PEACHTREE STREET, NE
ATLANTA, GEORGIA 30309
404-529-1230

POND
3000 Peachtree Lane, Suite 3000
Atlanta, Georgia 30309
Phone: (478) 338-7740
Fax: (478) 338-7740
JOB NO. 11805517

CORPORATE AIRCRAFT HANGAR FOR NORFOLK SOUTHERN CORPORATION
FULTON COUNTY AIRPORT - BROWN FIELD (FTY)
3822 AVIATION CIRCLE, SUITE 200
ATLANTA, GEORGIA 30336

**INTERIOR FINISH PLAN AREA B
OFFICE**

SHEET ID
A-701B

7/10/2020 3:04:59 AM BIM 360/1180557 - Pegasus/1180557_Pegasus_NS_Arch_CENTRAL_v19_r3.rvt