

1

2


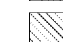


3

4

5

NOTE: SEE SHEET A-703 FOR FINISH SCHEDULE

FLOOR FINISH LEGEND

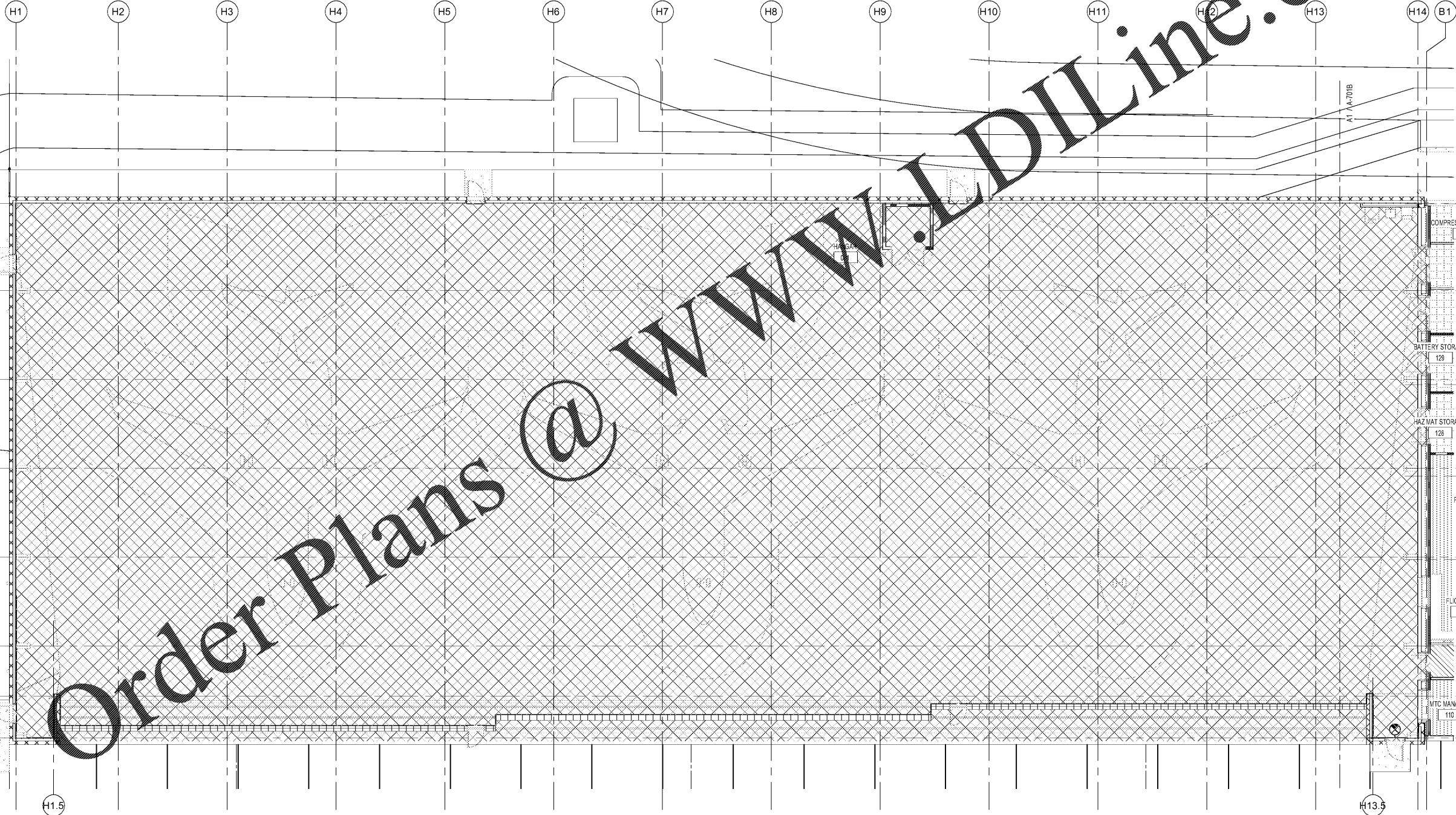
-  CPT-1
-  CPT-2
-  PC-1
-  SC-1

D

C

B

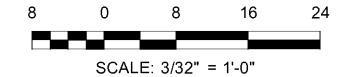
A



Order Plans @ www.LDILine.com

A1 FINISH PLAN AREA A HANGAR

SCALE: 3/32" = 1'-0"



MARK	DESCRIPTION	DATE

DESIGNED BY: E. Ames	SERVICE CORP. DOOR
CHECKED BY: B. H. H. H.	
DATE OF CONSTRUCTION: K. Webb-Teak	
ISSUED FOR CONSTRUCTION: E. Ames	
DATE: 02-11-2020	

NORFOLK SOUTHERN CORP.
1200 PEACHTREE STREET, NE
ATLANTA, GEORGIA 30309
404-525-1230
3000 Peachtree Lane, Suite 4000
Atlanta, Georgia 30328
Phone: (478) 336-7740
JOB NO. 1185557

CORPORATE AIRCRAFT HANGAR FOR NORFOLK SOUTHERN CORPORATION
FULTON COUNTY AIRPORT - BROWN FIELD (FTY)
3827 AVIATION CIRCLE, SUITE 200
ATLANTA, GEORGIA 30336

INTERIOR FINISH PLAN AREA A HANGAR

SHEET ID
A-701A