

1

2



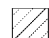



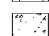
3

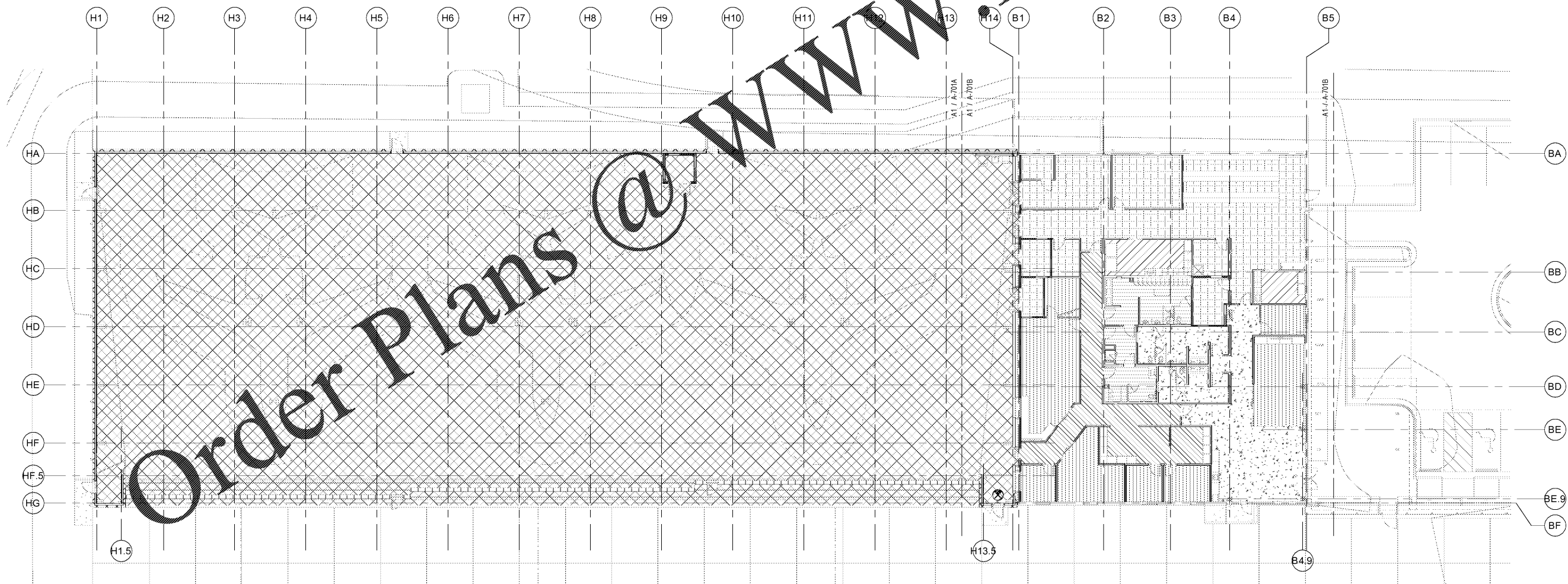
4

5

NOTE: SEE SHEET A-703 FOR FINISH SCHEDULE

FLOOR FINISH LEGEND

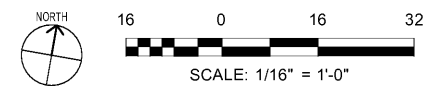
-  CPT-1
-  CPT-2
-  LVT-1
-  PC-1
-  PT-1
-  SC-1
-  TZ-1



Order Plans @

www.LDILine.com

A1 FINISH PLAN OVERALL
SCALE: 1/16" = 1'-0"



DESIGNED BY:	DATE
A. Finch	
Checked by:	
B. Finch	
Submitted by:	
K. Webb	
Issued for construction:	
DC-MM-YY	

DESIGNED BY:
A. Finch

CHECKED BY:
B. Finch

SUBMITTED BY:
K. Webb

ISSUED FOR CONSTRUCTION:
DC-MM-YY

NORFOLK SOUTHERN CORP
1200 PEACHTREE STREET, NE
ATLANTA, GEORGIA 30309
404-529-1230

POND
3002 Peachtree Lane, Suite 200
Atlanta, Georgia 30305
Phone (404) 338-7740
JOB NO. 1185547

CORPORATE AIRCRAFT HANGAR FOR NORFOLK SOUTHERN CORPORATION
FULTON COUNTY AIRPORT - BROWN FIELD (FTY)
382 AVIATION CIRCLE, SUITE 200
ATLANTA, GEORGIA 30338

INTERIOR FINISH PLAN - OVERALL

SHEET ID
A-701

7/10/2020 3:04:52 AM BIM 360//1180557 - Pegasus/1180557_Pegasus_NS_Arch_CENTRAL_v19_R3.rvt