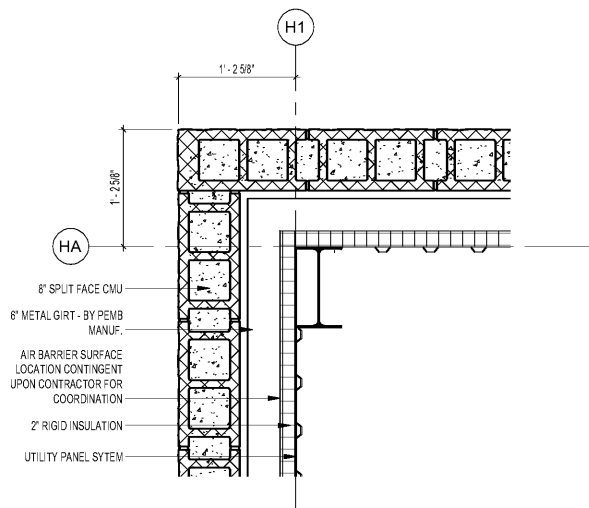
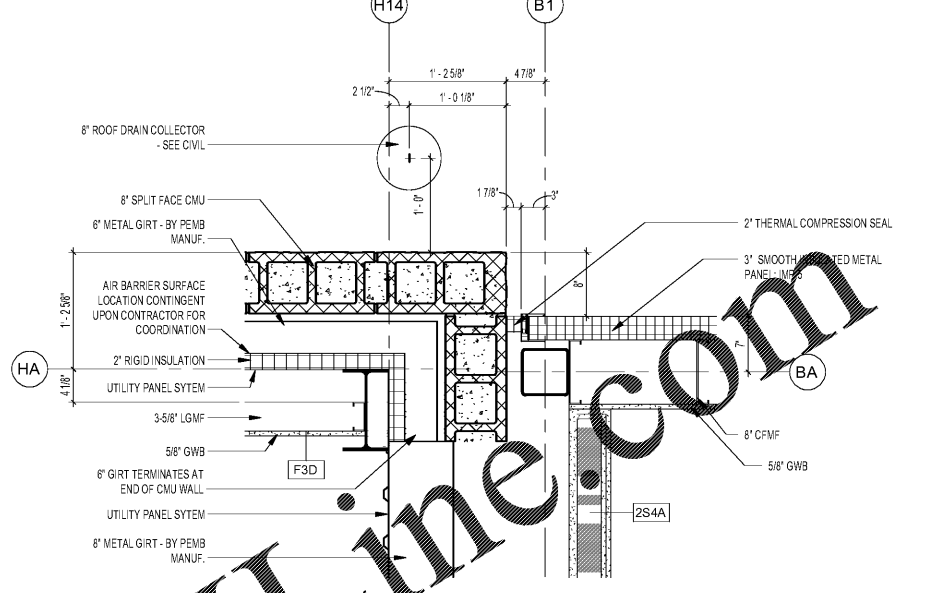


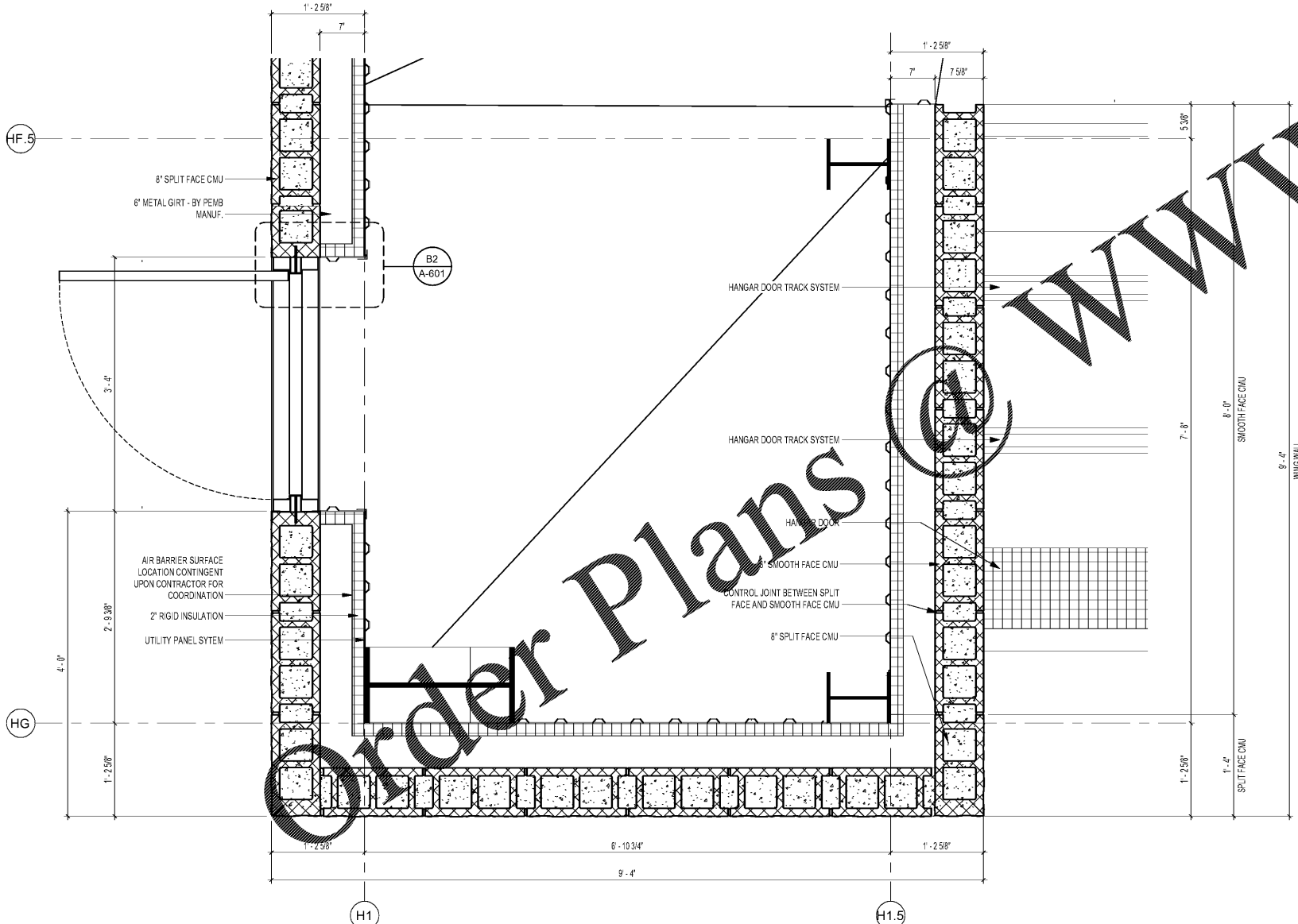
1 2 3 4 5



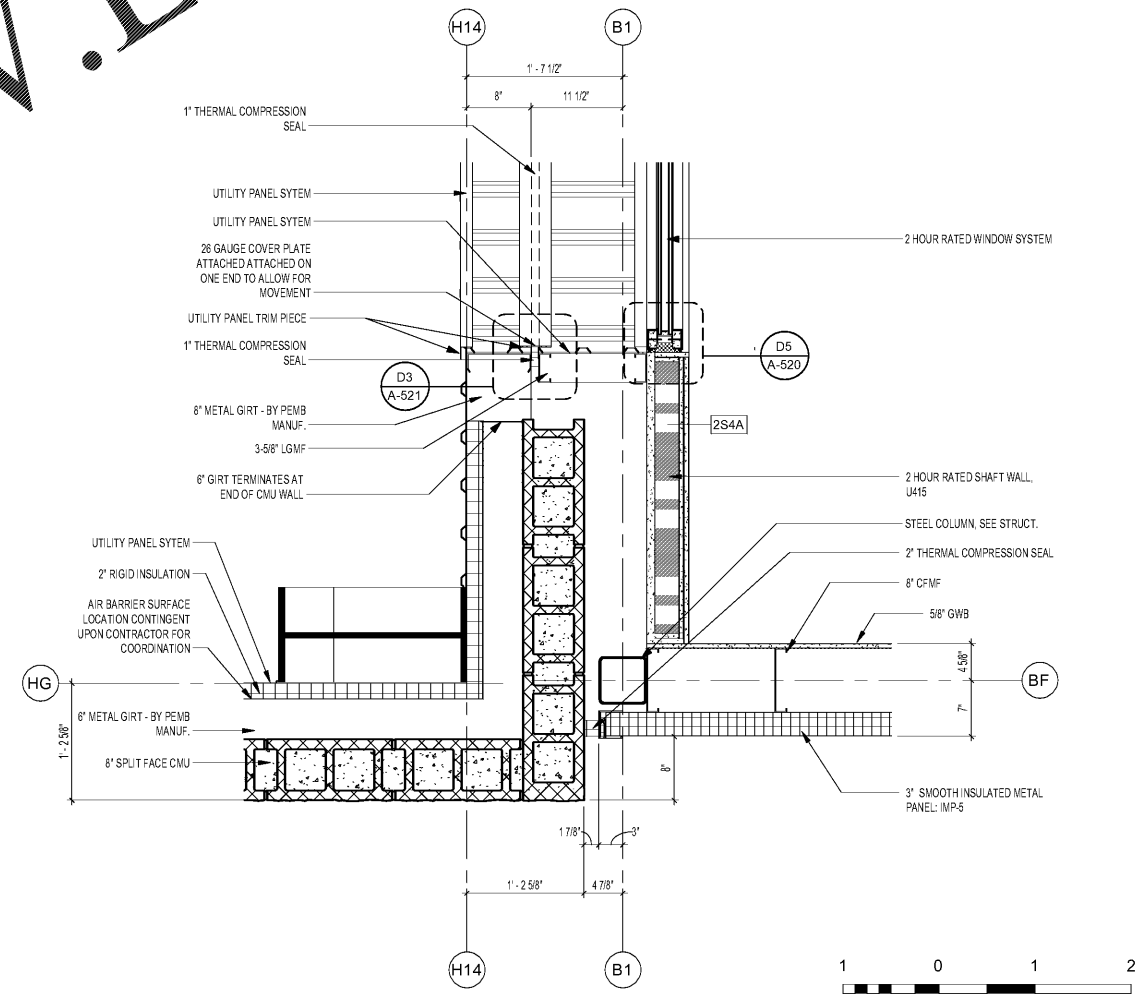
**D1** PLAN DETAIL NORTH EAST CORNER  
SCALE: 1" = 1'-0"



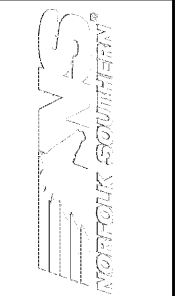
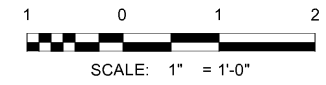
**D4** NORTH WALL TRANSITION FROM HANGAR TO OFFICE  
SCALE: 1" = 1'-0"



**A1** PLAN DETAIL - WING WALL  
SCALE: 1" = 1'-0"



**A4** SOUTH WALL TRANSITION FROM HANGAR TO OFFICE  
SCALE: 1" = 1'-0"



MARK	DESCRIPTION	DATE

DESIGNED BY:  
ARCHITECT BY:  
CHECKED BY:  
SUBMITTED BY:  
ISSUED FOR CONSTRUCTION:

NORFOLK SOUTHERN CORP  
1200 PEACHTREE STREET, NE  
ATLANTA, GEORGIA 30309  
404-529-1230

3000 Peachtree Lane, Suite 4000  
Atlanta, Georgia 30309  
Phone (478) 338-7740  
Fax (478) 338-7740  
JOB NO. 1185547

CORPORATE AIRCRAFT HANGAR FOR NORFOLK SOUTHERN CORPORATION  
FULTON COUNTY AIRPORT - BROWN FIELD (FTY)  
362 AVIATION CIRCLE, SUITE 200  
ATLANTA, GEORGIA 30336

**PLAN DETAILS**

SHEET ID  
**A-501**

7/10/2020 3:04:02 AM BIM 360//1190557 - Pegasus//1190557\_Pegasus\_NS\_Arch\_CENTRAL\_v19\_R3.rvt