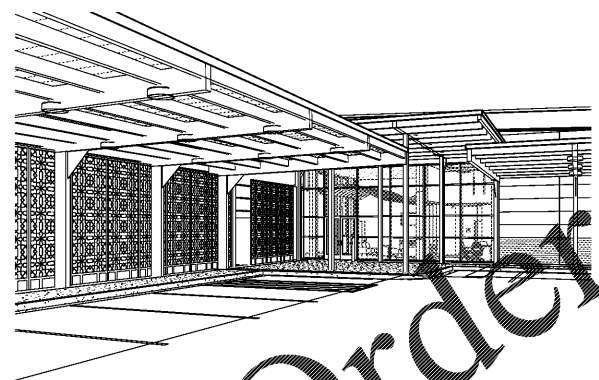
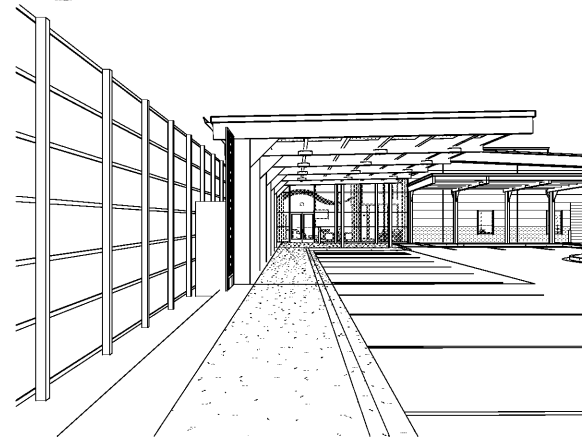


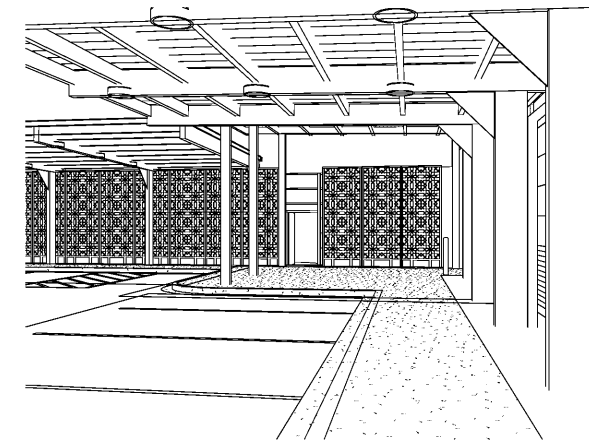
C1 CANOPY - BIRDS EYE - A
SCALE:



A1 CANOPY PERSPECTIVE - A
SCALE: N.T.S.

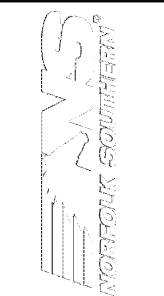
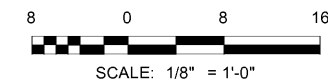


A3 CANOPY PERSPECTIVE - B
SCALE: N.T.S.



A5 CANOPY PERSPECTIVE - C
SCALE: N.T.S.

NOTE:
CANOPIES ARE A DELEGATED DESIGN AND
ARE SHOWN FOR DESIGN INTENT ONLY



MARK	DESCRIPTION	DATE

DESIGNED BY:
E. Amis
CHECKED BY:
K. Webb-Teague
SUBMITTED BY:
E. Amis
ISSUED FOR CONSTRUCTION:
DC-MM-YYYY

FOR THE ARCHITECT:
NORFOLK SOUTHERN
1200 PEACHTREE STREET, NE
ATLANTA, GEORGIA 30309
PHONE (404) 335-7740
JOB NO. 1185547

FOR THE CONTRACTOR:
POND
3000 Peachtree Lane, Suite 200
Atlanta, Georgia 30305
Phone (404) 335-7740
JOB NO. 1185547

CORPORATE AIRCRAFT HANGAR FOR NORFOLK SOUTHERN CORPORATION
FULTON COUNTY AIRPORT - BROWN FIELD (FTY)
3625 AVIATION CIRCLE, SUITE 200
ATLANTA, GEORGIA 30336

CANOPY PERSPECTIVES

SHEET ID
A-433