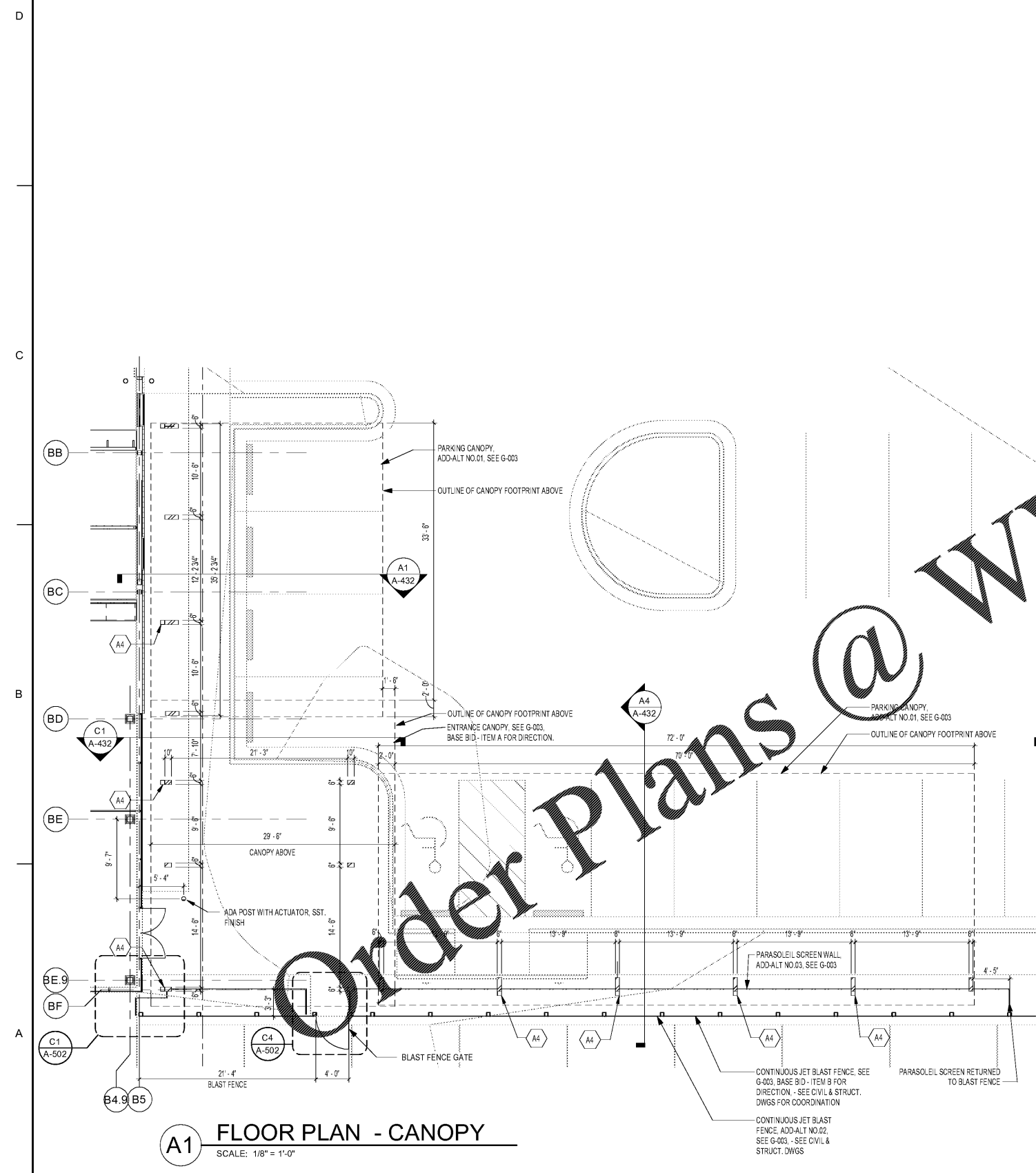


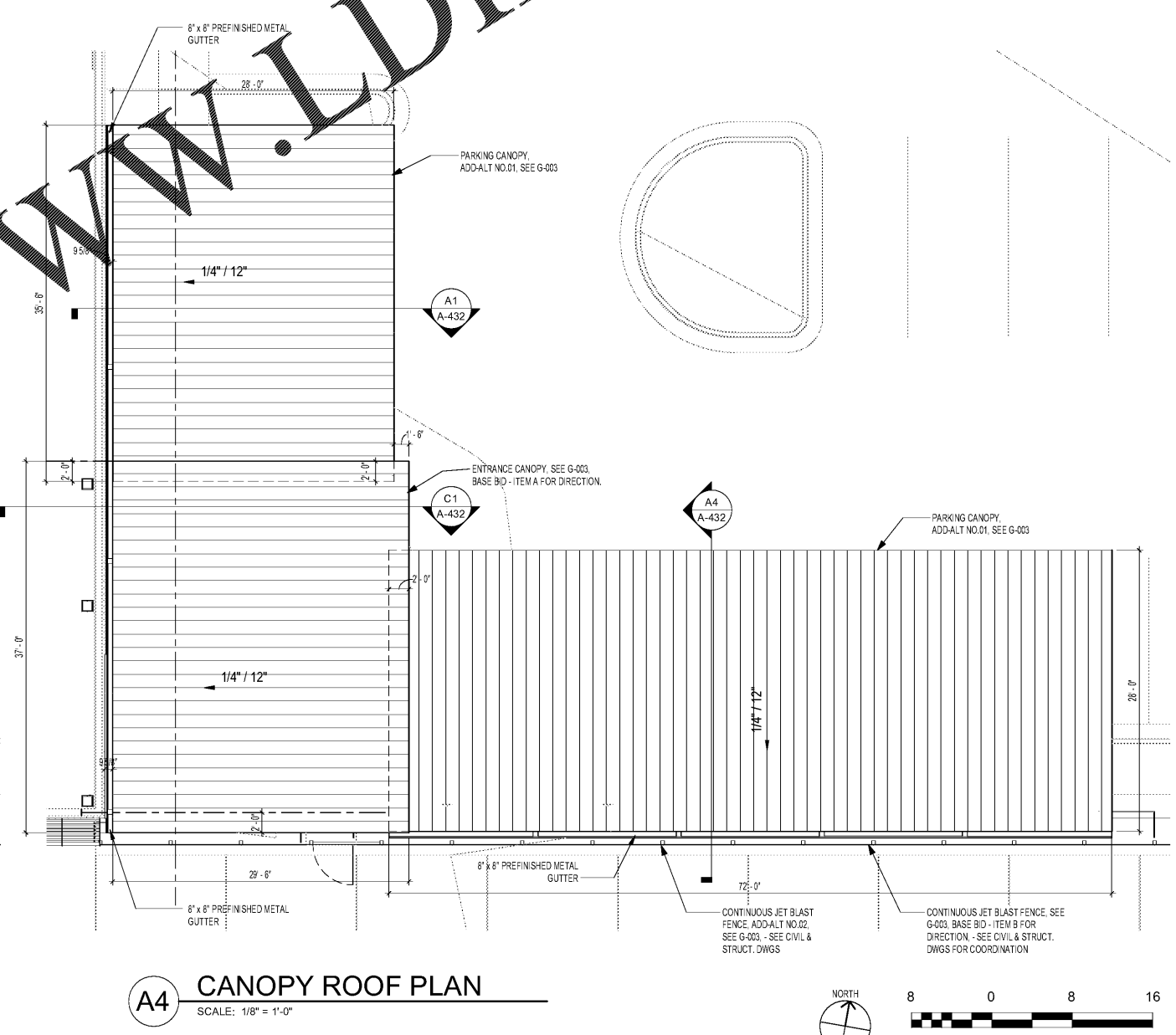
KEYNOTES:
 (KEYNOTE NUMBERS ARE UNIFORM ACROSS ALL SHEETS AND SOME MAY NOT BE REQUIRED ON THIS SHEET)

KEY #	KEYNOTE DESCRIPTION
A3	8" x 8" PREFINISHED METAL GUTTER
A4	6" x 6" PREFINISHED METAL DOWNSPOUTS; COORDINATE WITH CIVIL FOR UNDERGROUND WATER CONNECTION
A74	ADA POST WITH ACTUATOR, SST. FINISH

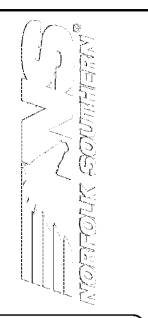
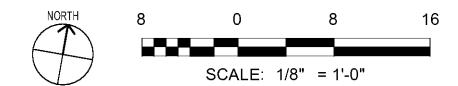
NOTE:
 CANOPIES AREA DELINEATED DESIGN AND ARE SHOWN FOR DESIGN INTENT ONLY



A1 FLOOR PLAN - CANOPY
 SCALE: 1/8" = 1'-0"



A4 CANOPY ROOF PLAN
 SCALE: 1/8" = 1'-0"



MARK	DESCRIPTION	DATE

DESIGNED BY:
 E. Amis
 CHECKED BY:
 K. Webb/1484
 SUBMITTED BY:
 E. Amis
 ISSUED FOR CONSTRUCTION:
 DC-MM-YY

NORFOLK SOUTHERN CORP
 1200 PEACHTREE STREET, NE
 ATLANTA, GEORGIA 30309
POND
 3000 Peachtree Lake, Suite 200
 Atlanta, Georgia 30305
 Phone: (478) 335-7740
 Fax: (478) 1185547

CORPORATE AIRCRAFT HANGAR FOR NORFOLK SOUTHERN CORPORATION
 FULTON COUNTY AIRPORT - BROWN FIELD (FTY)
 3622 AVIATION CIRCLE, SUITE 200
 ATLANTA, GEORGIA 30336
CANOPY LAYOUT PLAN & ROOF PLAN

SHEET ID
A-430