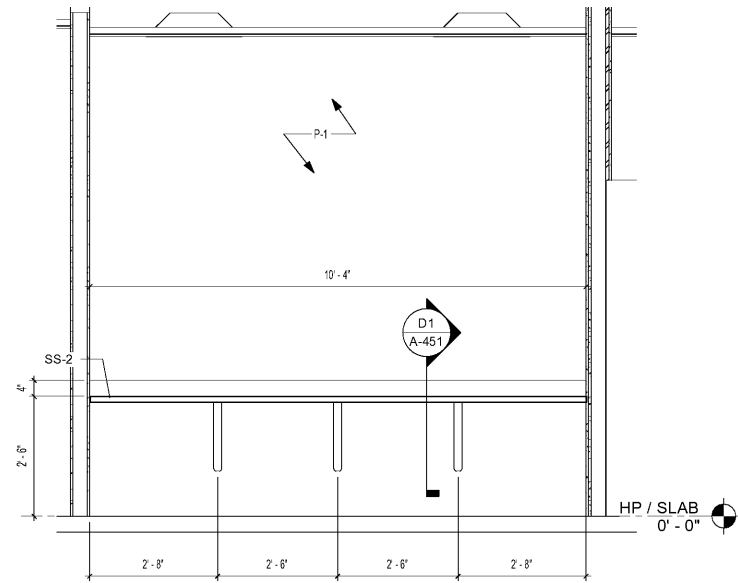
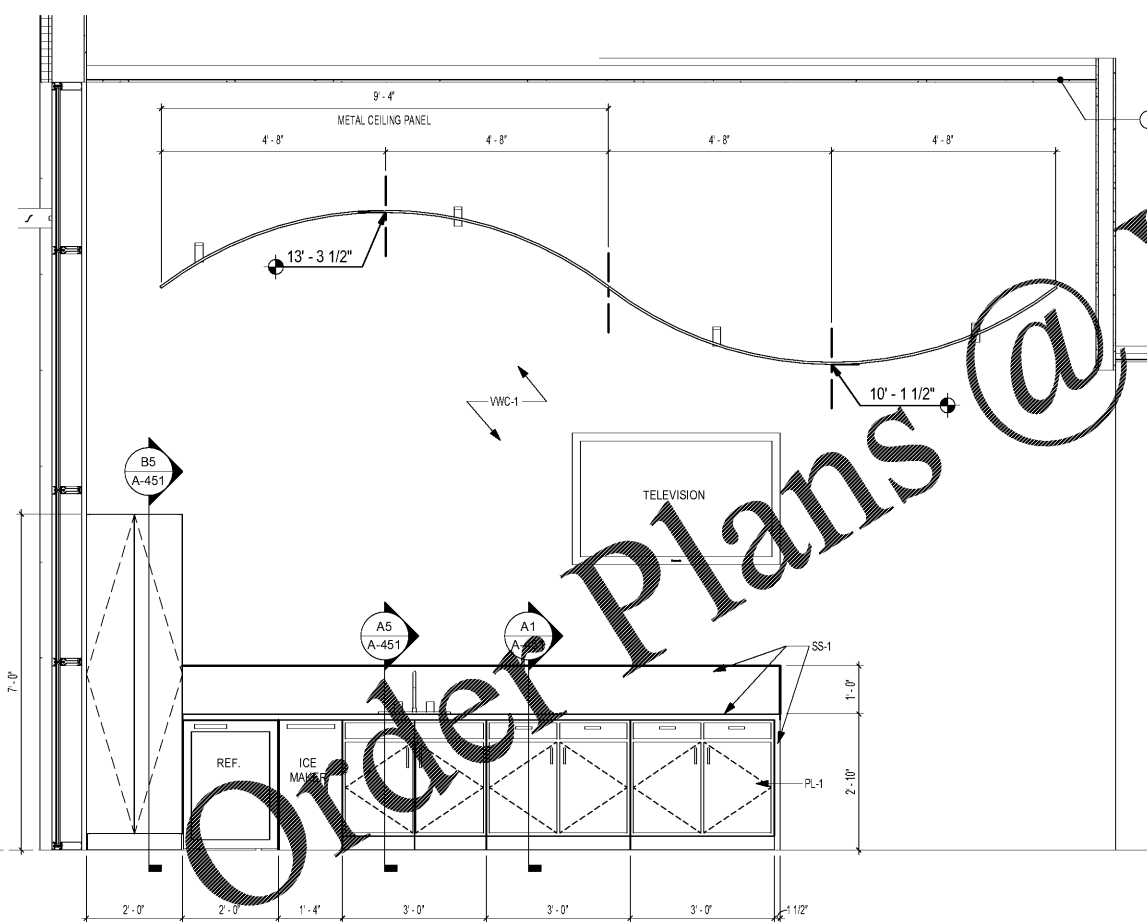


NOTES: SEE SHEET A-401 FOR TOILET ACCESSORY SCHEDULE.
SEE SHEET A-703 FOR FINISH SCHEDULE.

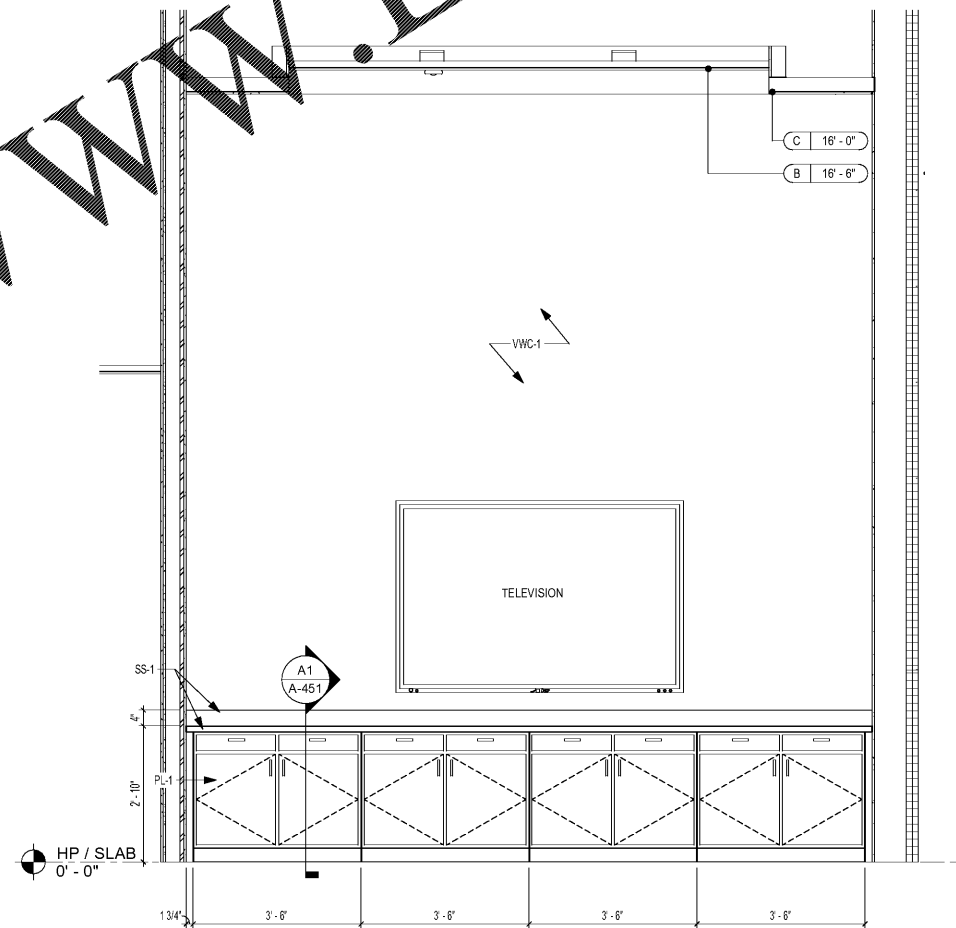


D1 INTERIOR ELEVATION - RECEP. DESK
SCALE: 1/2" = 1'-0"

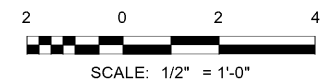


A1 LOBBY SERVICE BAR
SCALE: 1/2" = 1'-0"

*LOOSE EQUIPMENT INCLUDING, BUT NOT LIMITED TO, REFRIGERATORS, ICE MAKERS, DISHWASHERS, TELEVISIONS, MONITORS, ETC. ARE SHOWN FOR ILLUSTRATIVE AND COORDINATION PURPOSES ONLY. CONTRACTOR TO COORDINATE FINAL LOCATIONS AND PROVIDE NECESSARY POWER, PLUMBING, STRUCTURAL, ETC. INFRASTRUCTURE FOR PROPER INSTALLATION.



A4 ELEVATION CONFERENCE 101
SCALE: 1/2" = 1'-0"



MARK	DESCRIPTION	DATE

DESIGNED BY: A. Hines	CHECKED BY: K. Webb/1686
PROJECT NO.: 1185547	ISSUED FOR CONSTRUCTION: DC-MM-YY
NORFOLK SOUTHERN CORP. 1200 PEACHTREE STREET, NE ATLANTA, GEORGIA 30309	FOR THE CLIENT: NORFOLK SOUTHERN CORPORATION 3000 Peachtree Lane, NE, Suite 200 Atlanta, Georgia 30305 Phone: (404) 338-7740 Fax: (404) 338-7740 LOG NO. 1185547

CORPORATE AIRCRAFT HANGAR FOR NORFOLK SOUTHERN CORPORATION FULTON COUNTY AIRPORT - BROWN FIELD (FTY) 3627 AVIATION CIRCLE, SUITE 200 ATLANTA, GEORGIA 30336	INTERIOR ELEVATIONS
--	---------------------

SHEET ID A-423

7/10/2020 10:41:49 AM BIM 360//1180557 - Pegasus/1180557_Pegasus_NS_Arch_CENTRAL_v19_R3.rvt