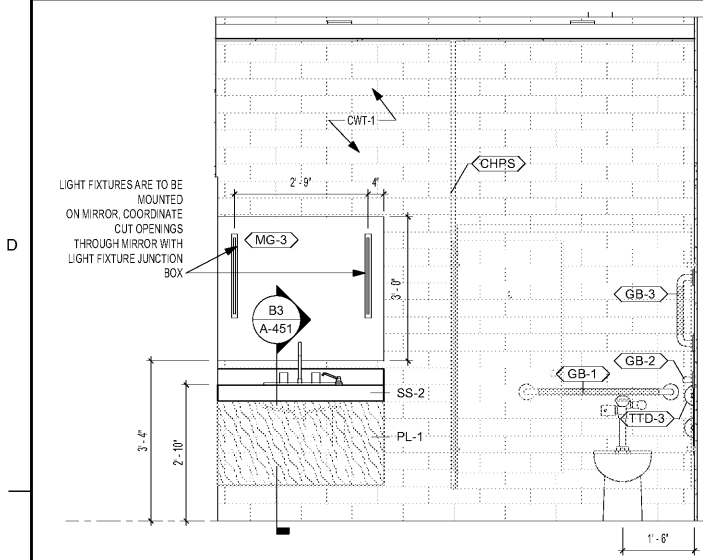
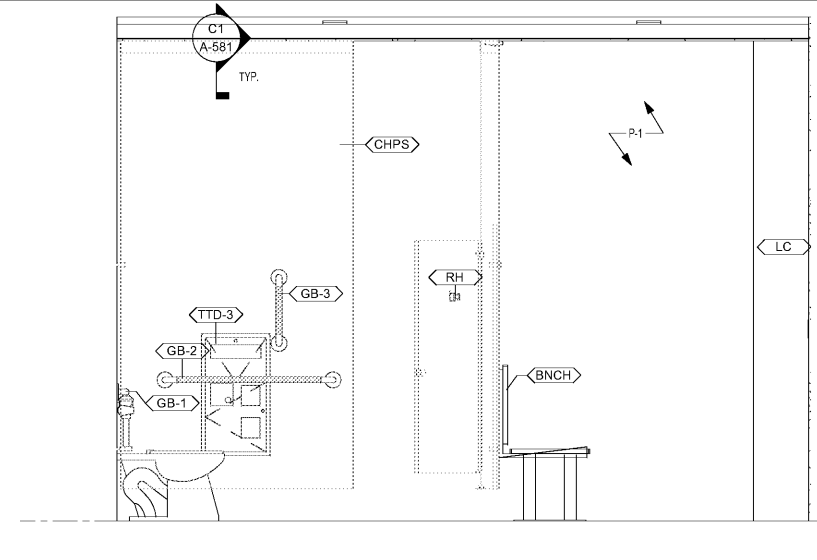


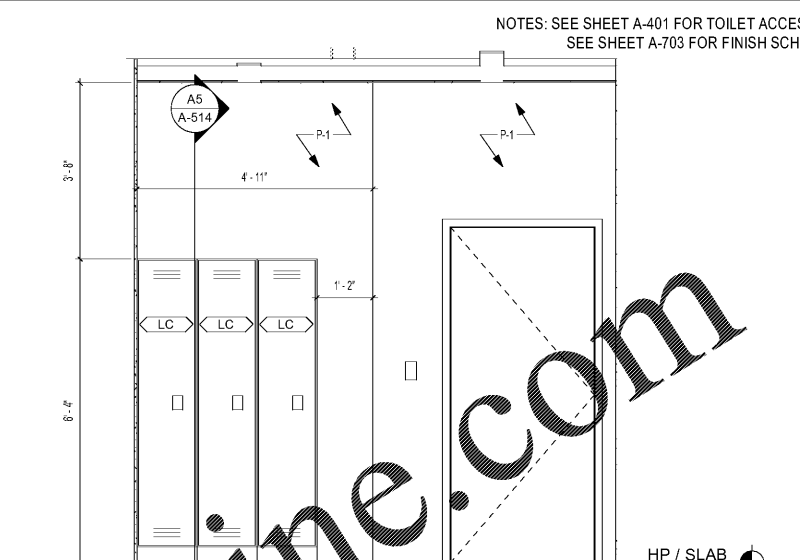
7/10/2020 10:41:38 AM BIM 360://1190557 - Pegasus/1190557_Pegasus_NS_Arch_CENTRAL_v19_R3.rvt



D1 INTERIOR ELEVATION - PRIVATE WOMEN'S
SCALE: 1/2" = 1'-0"

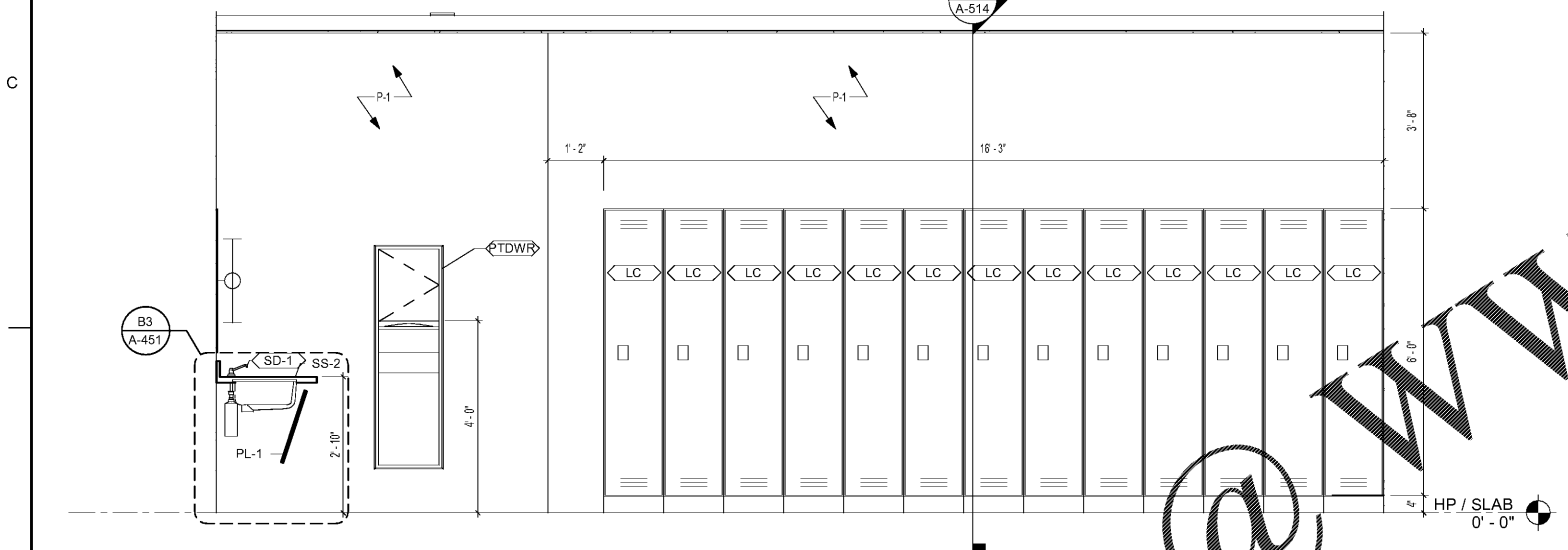


D3 INTERIOR ELEVATION - PRIVATE RESTROOM
SCALE: 1/2" = 1'-0"

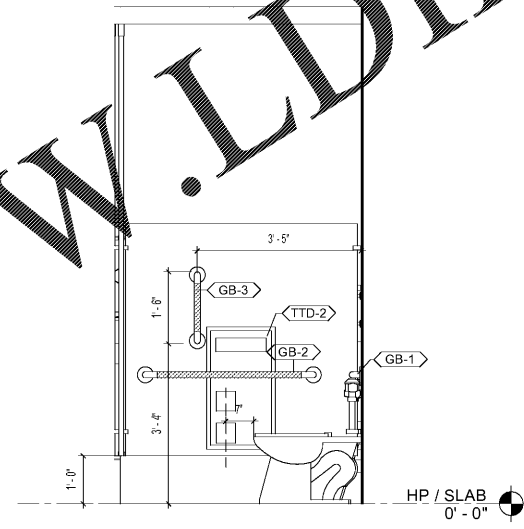


D5 INTERIOR ELEVATION - PRIVATE WOMEN'S
SCALE: 1/2" = 1'-0"

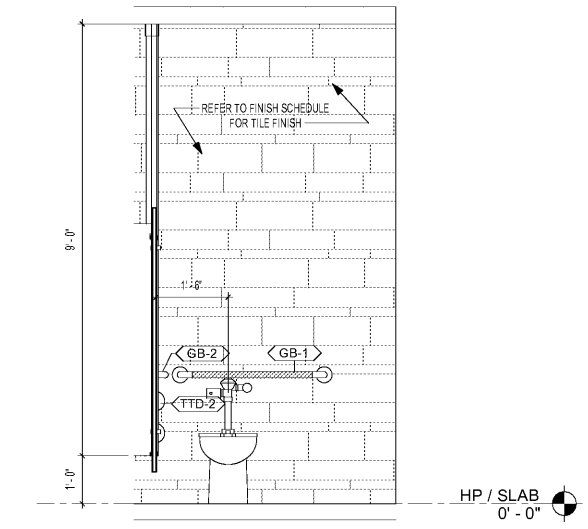
NOTES: SEE SHEET A-401 FOR TOILET ACCESSORY SCHEDULE.
SEE SHEET A-703 FOR FINISH SCHEDULE.



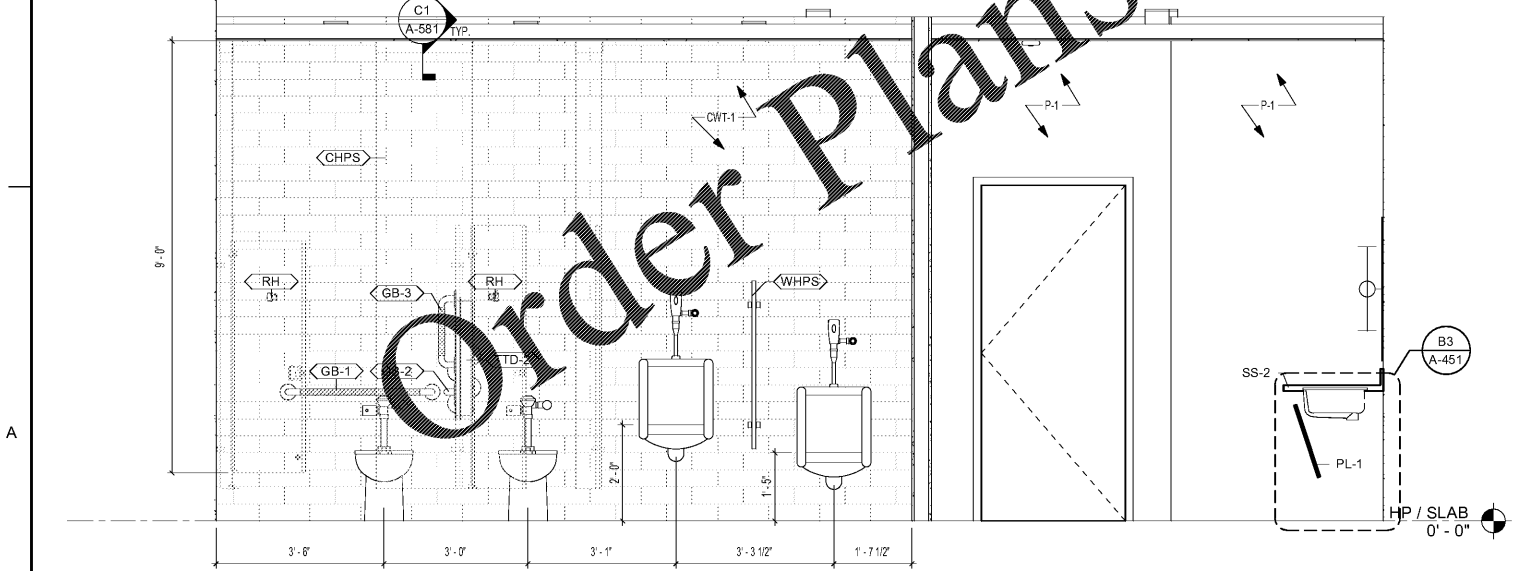
C1 INTERIOR ELEVATION - PRIVATE MEN'S
SCALE: 1/2" = 1'-0"



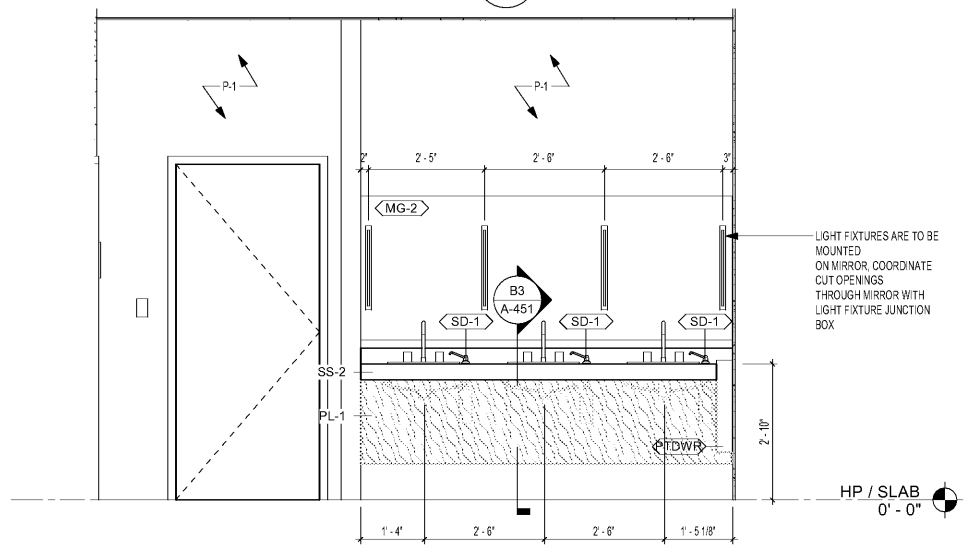
C4 ADA STALL SIDE WALL
SCALE: 1/2" = 1'-0"



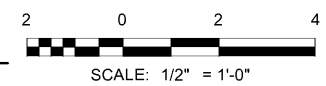
C5 ADA STALL WET WALL
SCALE: 1/2" = 1'-0"



A1 INTERIOR ELEVATION - PRIVATE MEN'S
SCALE: 1/2" = 1'-0"



A4 INTERIOR ELEVATION - PRIVATE MEN'S
SCALE: 1/2" = 1'-0"



LDLINE
NORFOLK SOUTHERN

MARK	DESCRIPTION	DATE

DESIGNED BY:
ARCHITECT: NORFOLK SOUTHERN
BUSINESS MANAGER/OWNER: B. LINDA J. JONES
CHECKED BY: K. WILCOX
SUBMITTED BY: E. AMES
ISSUED FOR CONSTRUCTION: DE-MMM-YYY

NORFOLK SOUTHERN CORP.
1200 PEACHTREE STREET, NE
ATLANTA, GEORGIA 30309
404-529-1230
404-529-1230
3000 Peachtree Lane, S.W., 30092
Phone: (478) 336-7740
JOB NO. 1190557

CORPORATE ARCHITECT HANGAR FOR NORFOLK SOUTHERN CORPORATION
FULTON COUNTY AIRPORT - BROWN FIELD (FTY)
3825 AVIATION CIRCLE, SUITE 200
ATLANTA, GEORGIA 30336

INTERIOR ELEVATIONS

SHEET ID
A-420