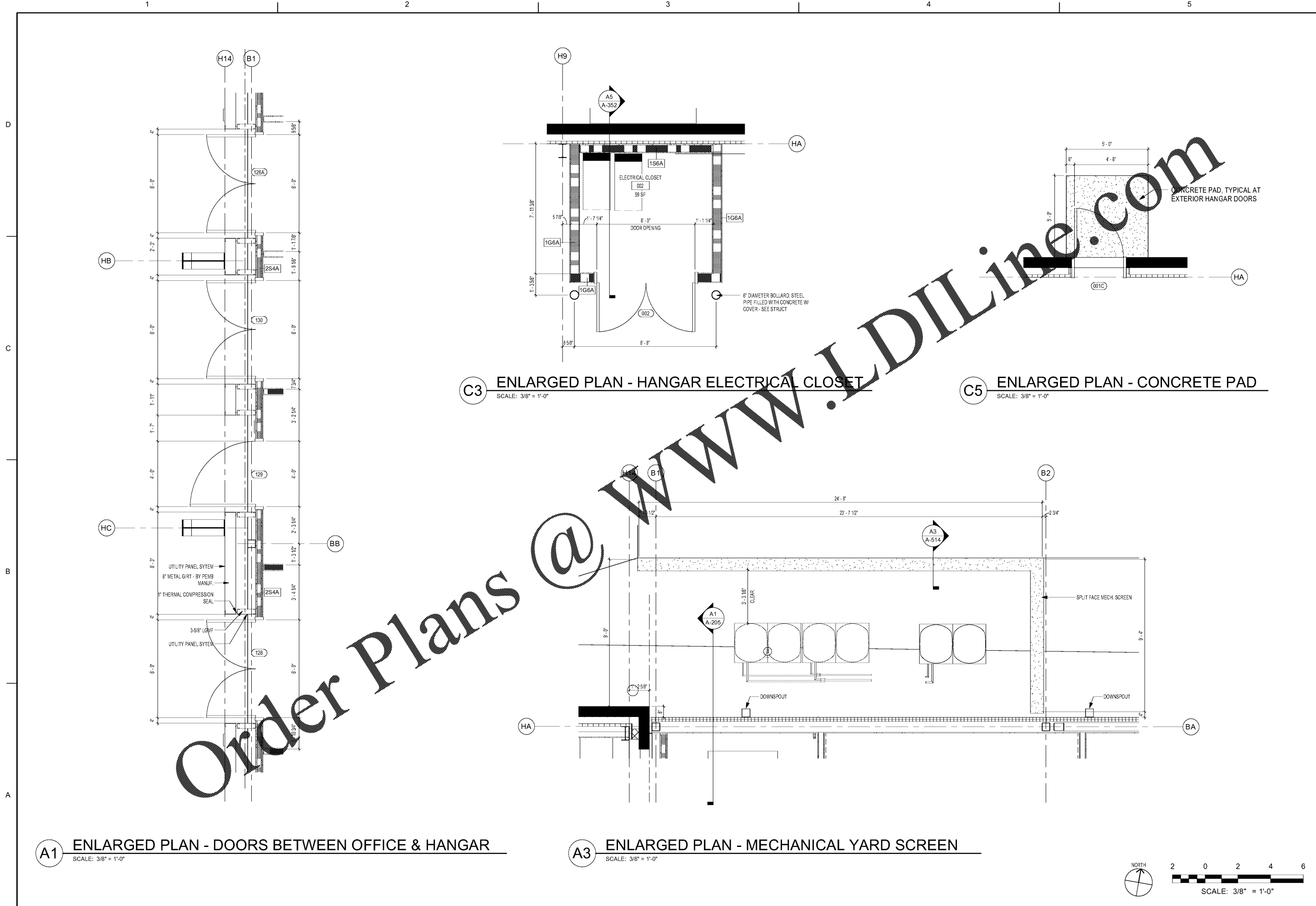
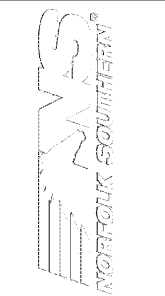


7/10/2020 3:03:21 AM BIM 360/1190557 - Pegasus/1190557_Pegasus_NS_Arch_CENTAL_v19_R3.rvt



Order Plans @ www.LDILine.com

www.LDILine.com



| MARK | DESCRIPTION | DATE |
|------|-------------|------|
| | | |
| | | |
| | | |
| | | |

| | |
|--|-----------------------------|
| DESIGNED BY: A. Ames | CHECKED BY: K. Webb-Teke |
| PROJECT NO. 1190557 | DATE 08/11/2020 |
| ISSUED FOR CONSTRUCTION: DC-MMM-VTY | |

NORFOLK SOUTHERN CORPORATION
 1200 PEACHTREE STREET, NE
 ATLANTA, GEORGIA 30309
POND
 3002 Peachtree Lane, Atlanta, GA 30305
 Phone (404) 335-7740
 Fax (404) 335-7740
 Job No. 1190557

CORPORATE AIRCRAFT HANGAR FOR NORFOLK SOUTHERN CORPORATION
 FULTON COUNTY AIRPORT - BROWN FIELD (FTY)
 3827 AVIATION CIRCLE, SUITE 200
 ATLANTA, GEORGIA 30338

ENLARGED PLANS

SHEET ID
A-411

