

KEY #	KEYNOTE DESCRIPTION
A58	SERPENTINA CURVED METAL CEILING
A92	STAINLESS STEEL DRIP EDGE

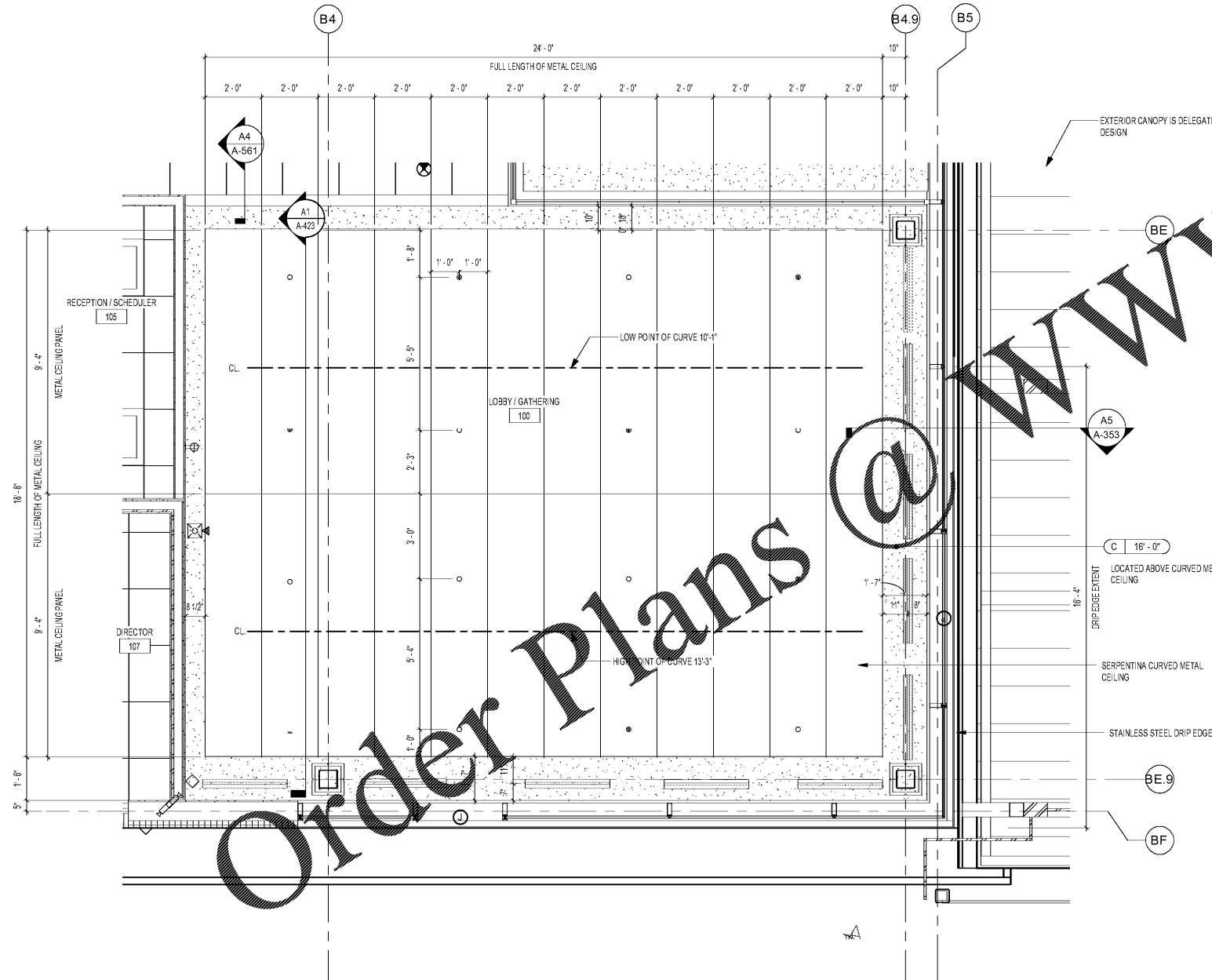
GENERAL RCP SHEET NOTES:

1. ALL MATERIAL EXPOSED WITHIN A RETURN AIR CEILING PLENUM SHALL BE NONCOMBUSTIBLE OR SHALL BE LIMITED IN COMBUSTIBILITY AND HAVE A FLAME SPREAD INDEX OF 25 MAX. AND A SMOKE- DEVELOPMENT INDEX OF 50 MAX., PER ASTM E84.
2. IN LATRINES, TOILETS, LOCKER ROOMS AND JANITOR CLOSETS ALL GYPSUM BOARD CEILINGS SHALL BE WATER RESISTANT GYPSUM BOARD.
3. ALL CEILING MOUNTED DEVICES SHALL BE CENTERED IN BOTH DIRECTIONS IN ACOUSTICAL CEILING PANELS U.N.O. CENTER SPRINKLER HEADS IN ACOUST. CEILING PANELS WHERE THEY OCCUR - COORDINATE THE LOCATION OF THE SPRINKLER HEADS WITH OTHER CEILING FIXTURES AND EQUIPMENT IN ALL CEILING. ENSURE THAT A SYMMETRICAL AND BALANCED ARRANGEMENT IS INSTALLED. CONTRACTING OFFICER IS TO REVIEW INSTANCE OF NON-EQUAL SPACING PRIOR TO INSTALLATION.
4. CEILING HEIGHTS INDICATED (I.E. 10'-0") ARE RELATIVE TO THE FINISH FLOOR ELEVATION OF THE ROOM FOR WHICH THEY ARE INDICATED.
5. CEILING GRIDS SHALL BE ORIENTED WITHIN SPACES AS SHOWN, U.N.O. FULL TILE (FT) WHEN INDICATED SHALL ABUT DESIGNATED WALL. LIMIT PARTIAL PANELS TO NO LESS THAN 6".
6. DEVICES HAVE BEEN SHOWN FOR COORDINATION PURPOSES. ALL DEVICES MAY NOT BE SHOWN.
7. THE CONTRACTOR SHALL ENSURE THE INSTALLATION OF ALL DEVICES INDICATED ON THE ENGR. DWG. SEE MECHANICAL, ELECTRICAL, PLUMBING AND FIRE PROTECTION DRAWINGS FOR ITEMS NOT SHOWN ON REFLECTED CEILING PLANS. CONTACT THE ARCHITECT IF ANY CONFLICTS OCCUR.
8. AT WALLS WITH SOUND ATTENUATION BLANKETS PROVIDE SOUND ATTENUATION BLANKETS ON CEILING TO 2'-0" ON BOTH SIDES OF WALL EXCEPT AT WALLS WITH SOUND ATTENUATION BLANKETS ATTACHED TO STRUCTURE.
9. COORDINATE ACCESS PANELS WITH MECHANICAL BALANCING DAMPER LOCATIONS.
10. FAN SUPPLIER TO SUPPLY ALL SUPPLEMENTAL SUPPORT TO ATTACH SYSTEM TO PRIMARY BUILDING FRAME.

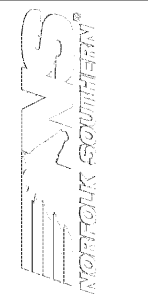
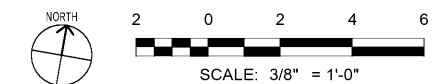
CEILING SCHEDULE	
TYPE	DESCRIPTION
A	2'-0" X 2'-0" ACT SYSTEM
B	HIGH BAC 2'-0" X 2'-0" ACT SYSTEM
C	ONE LAYER GYPSUM WALL BOARD
D	1 HOUR RATED ASSEMBLY U419
E	EXPOSED STRUCTURE

REFLECTED CEILING PLAN LEGEND

- DOWNLIGHT- CENTER IN ACOUST. CEILING PANELS, AND METAL CEILING TYP., U.N.O.
- EMERGENCY DOWNLIGHT- CENTER IN ACOUST. CEILING PANELS, AND METAL CEILING TYP., U.N.O.
- ⊙ PENDANT LIGHT FIXTURE, SEE ELEC.
- |— LINEAR PENDANT LIGHT FIXTURE
- |—| LINEAR EMERGENCY PENDANT LIGHT FIXTURE
- 2' X 2' LAY-IN LIGHT FIXTURE
- 2' X 2' EMERGENCY LAY-IN LIGHT FIXTURE
- 2' X 4' LAY-IN LIGHT FIXTURE
- 2' X 4' EMERGENCY LAY-IN LIGHT FIXTURE
- ▮ LINEAR SLOT DIFFUSERS
- ⊠ 24" X 24" MECH. DIFFUSERS
- ⊞ 24" X 24" MECH. RETURN AIR GRILLES
- ⊞ 24" X 24" MECH. EXHAUST
- ⊠ WALL MOUNTED EXIT SIGN
- ⊞ CEILING MOUNTED EXIT SIGN
- OCCUPANCY SENSOR, SEE ELEC.
- ⊞ CEILING MOUNTED STROBE
- ⊞ SMOKE DETECTOR
- ⊞ SPEAKER STROBE - SEE FIRE PROTECTION
- WALL PACK LIGHT - SEE ELEC.
- ⊞ HVAC CASSETTE UNIT - SEE MECH.
- LIGHT FIXTURE, SEE ELEC.



A1 REFLECTED CEILING PLAN LOBBY
SCALE: 3/8" = 1'-0"



MARK	DESCRIPTION	DATE

DESIGNED BY: A. Hines	CHECKED BY: K. Webb-Laska
PROJECT NO. 190557	ISSUED FOR CONSTRUCTION
DWG. NO. 190557-1	DATE

NORFOLK SOUTHERN CORP.
1200 PEACHTREE STREET, NE
ATLANTA, GEORGIA 30309
404-529-1230

DESIGNED BY: A. Hines
PROJECT NO. 190557

CHECKED BY: K. Webb-Laska
DATE: 01/11/2020

ISSUED FOR CONSTRUCTION
DATE: 01/11/2020

POND
3000 Peachtree Lane, Suite 3000
Atlanta, Georgia 30309
Phone: (404) 529-7740
Fax: (404) 529-7741
Job No. 190557-1

CORPORATE AIRCRAFT HANGAR FOR NORFOLK SOUTHERN CORPORATION
FULTON COUNTY AIRPORT - BROWN FIELD (FTY)
3827 AVIATION CIRCLE, SUITE 200
ATLANTA, GEORGIA 30338

**ENLARGED REFLECTED CEILING
PLAN LOBBY**

SHEET ID
A-410