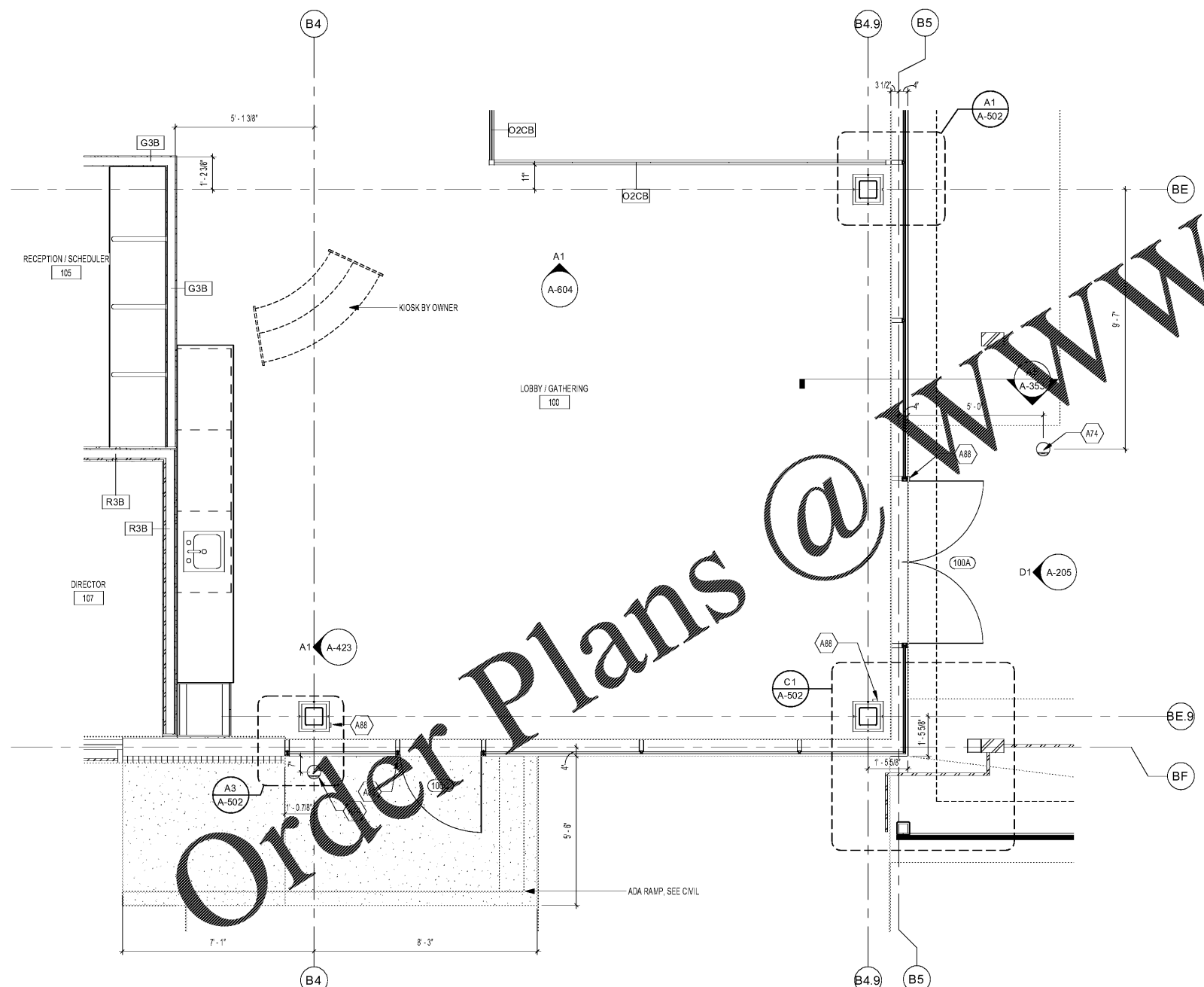


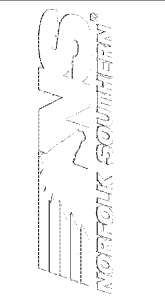
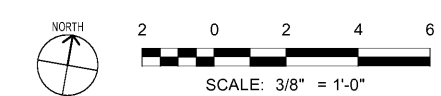
ENLARGED FLOOR PLAN NOTES:

- 1. SEE SHEET A-001 FOR GENERAL NOTES.
- 2. SEE SHEET A-005 & A-006 FOR PARTITION TYPES & DETAILS.
- 3. SEE STRUCTURAL, MECHANICAL, PLUMBING, FIRE PROTECTION, ELECTRICAL & INTERIOR DRAWINGS FOR ADDITIONAL INFORMATION.
- 4. PARTITIONS INDICATED WITH . SEE SHEET A-005 & A-006 FOR PARTITION TYPES.
- 5. DOORS INDICATED WITH SEE SHEET A-601 FOR DOOR SCHEDULES & TYPES.
- 6. WINDOWS INDICATED WITH SEE SHEET A-604 FOR WINDOW TYPES.
- 7. SEE SHEET A-003 & A-004 FOR TYPICAL MOUNTING HEIGHTS, LOCATIONS & DETAILS.

WWW.LDILine.com



A1 ENLARGED PLAN LOBBY
SCALE: 3/8" = 1'-0"



MARK	DESCRIPTION	DATE

DESIGNED BY: A. Parks	CHECKED BY: K. Webb-Teague	ISSUED FOR CONSTRUCTION: E. Parks
DRAWN BY: B. Linares	DATE: 10/1/2020	DATE: 10/1/2020
PROJECT NO.: 190557	PROJECT NAME: CORPORATE AIRCRAFT HANGAR FOR NORFOLK SOUTHERN CORPORATION	PROJECT LOCATION: FULTON COUNTY AIRPORT - BROWN FIELD (FTY) 382 AVIATION CIRCLE, SUITE 200 ATLANTA, GEORGIA 30338

ENLARGED PLAN LOBBY

SHEET ID
A-409