

WALL SECTIONS NOTES:

1. SEE SHEET A-001 FOR GENERAL NOTES.
2. SEE STRUCTURAL, MECHANICAL, PLUMBING, FIRE PROTECTION & ELECTRICAL DRAWINGS FOR ADDITIONAL INFORMATION.



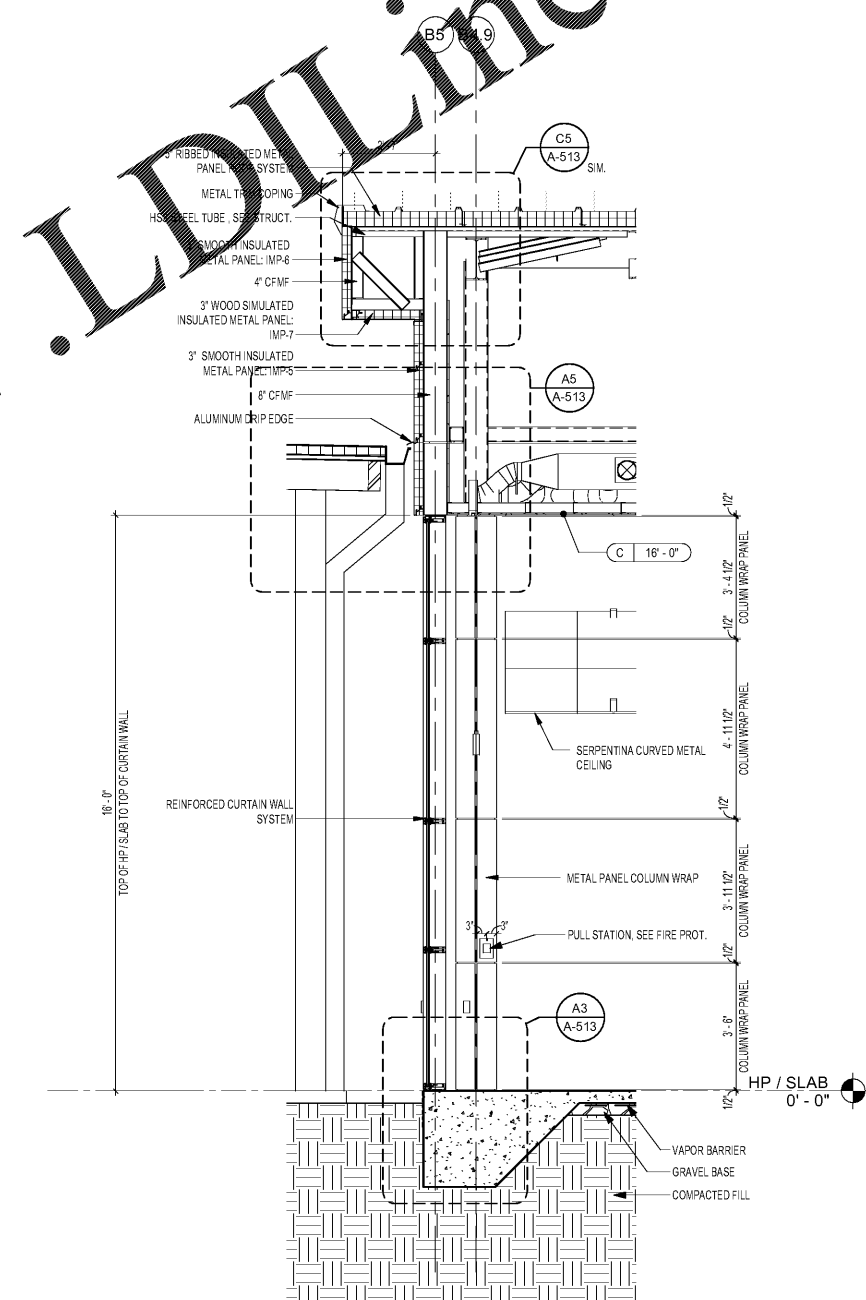
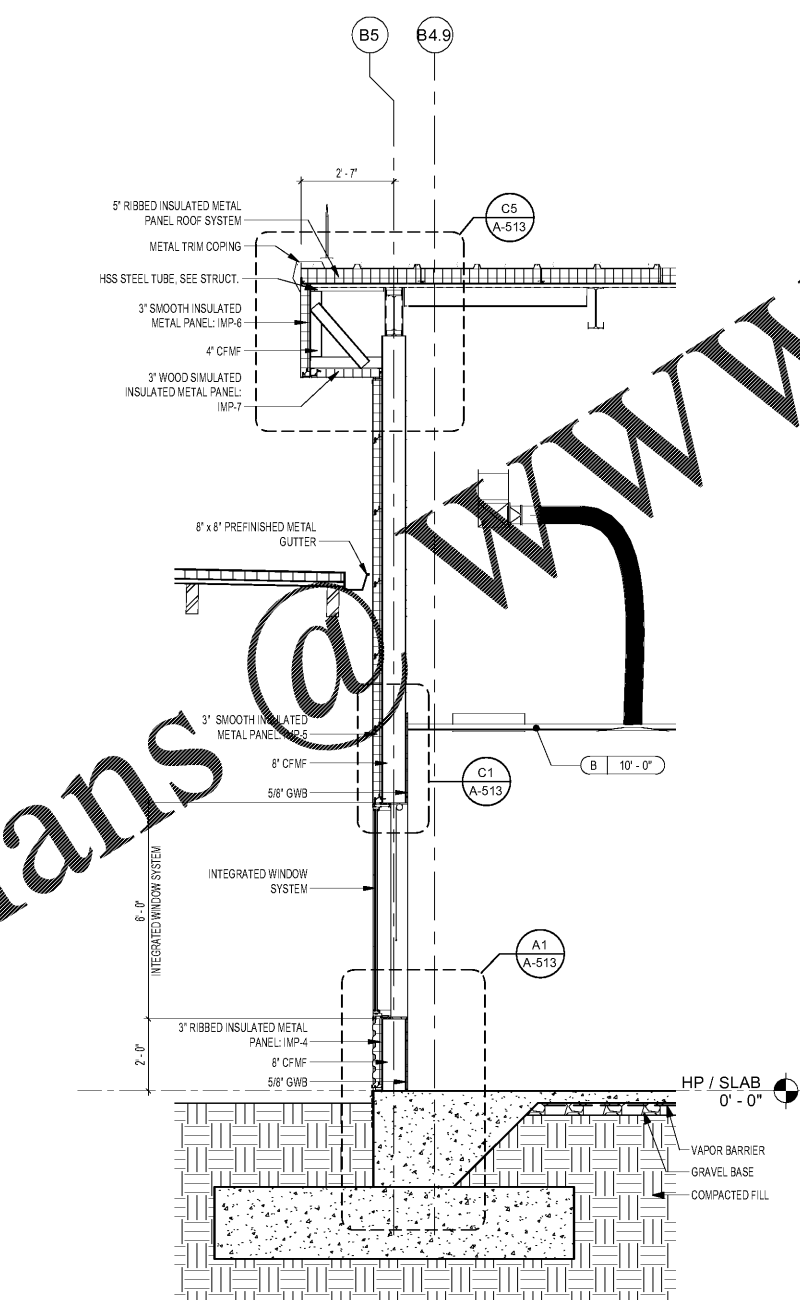
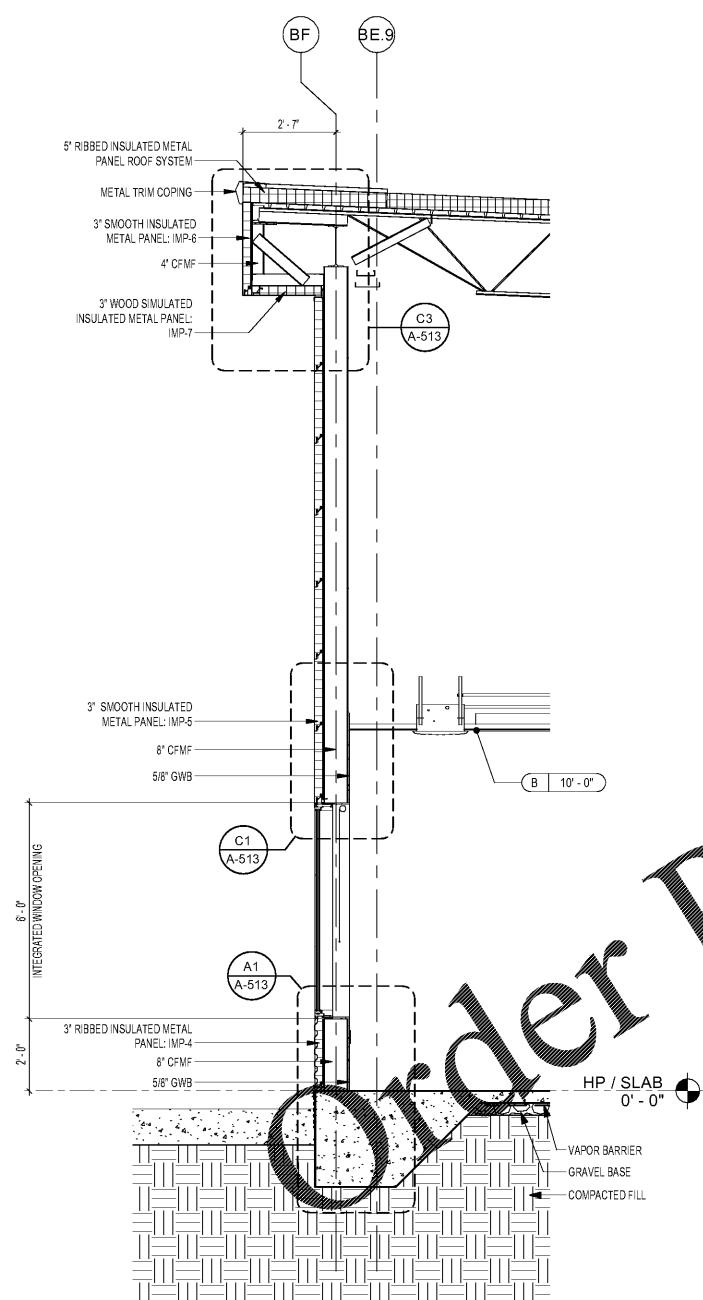
MARK	DESCRIPTION	DATE

DESIGNED BY: A. Ames	CHECKED BY: K. Webb-Teke	ISSUED FOR CONSTRUCTION: DC-MM-MYTY
PROJECT NO. 1190557	DATE OF CONSTRUCTION: 11/19/2020	DATE OF REVISION: 11/19/2020
<p>POND 3000 Peachtree Lane, Suite 200 Atlanta, Georgia 30309 Phone (404) 525-1230 Fax (404) 525-1231 Job No. 1190557</p>		

CORPORATE AIRCRAFT HANGAR FOR NORFOLK SOUTHERN CORPORATION
 FULTON COUNTY AIRPORT - BROWN FIELD (F71)
 3822 AVIATION CIRCLE, SUITE 200
 ATLANTA, GEORGIA 30336

OFFICE EXTERIOR WALL SECTIONS

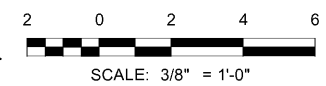
SHEET ID
A-353



A1 SECTION - OFFICE THROUGH WINDOW
 SCALE: 3/8" = 1'-0"

A3 SECTION - OFFICE TYPICAL EAST WALL
 SCALE: 3/8" = 1'-0"

A5 SECTION - OFFICE LOBBY CURTAIN WALL
 SCALE: 3/8" = 1'-0"



7/10/2020 3:02:50 AM BIM 360/1190557 - Pegasus/1190557_Pegasus_NS_Arch_CENTAL_v19_r3.rvt