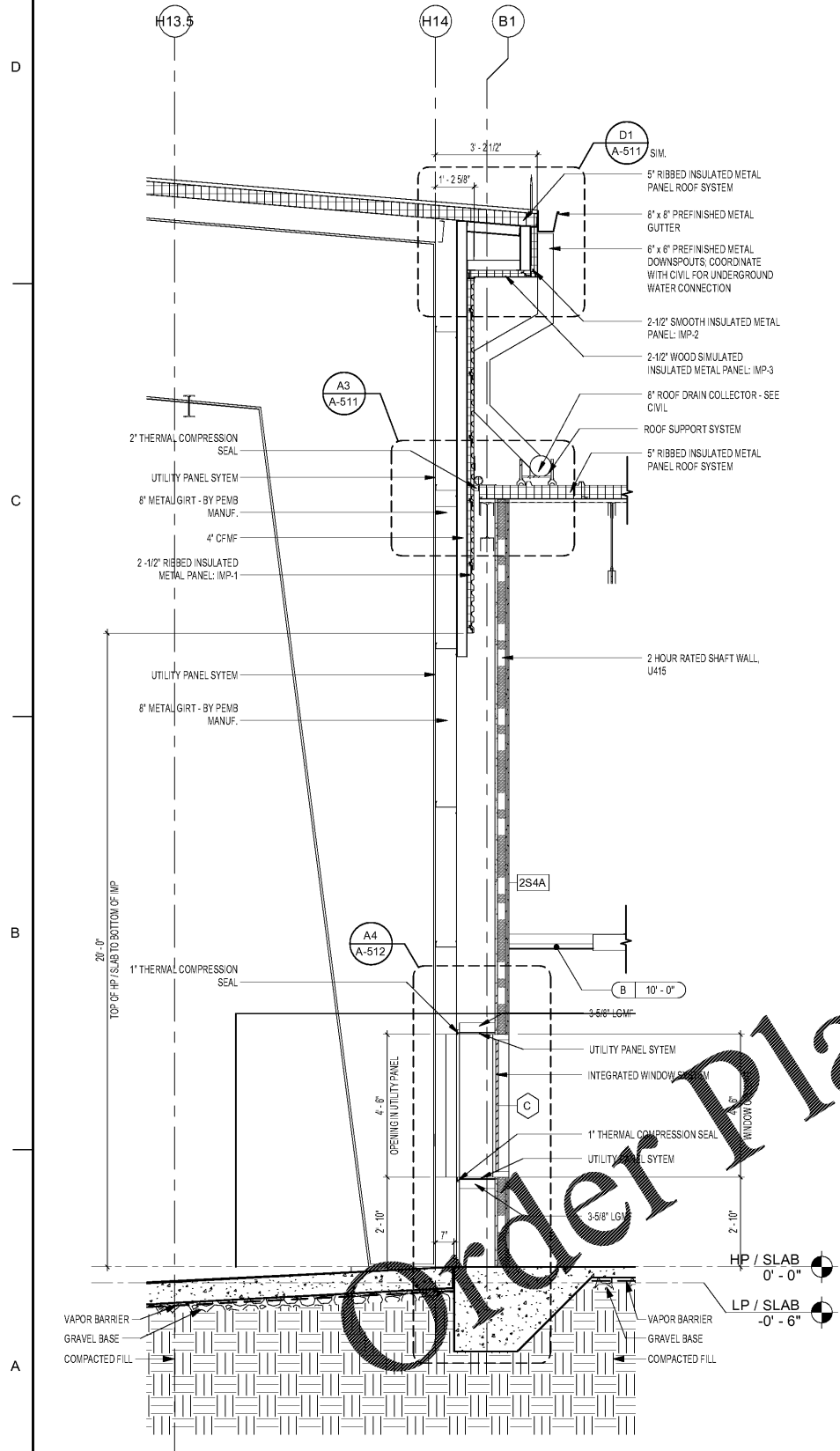
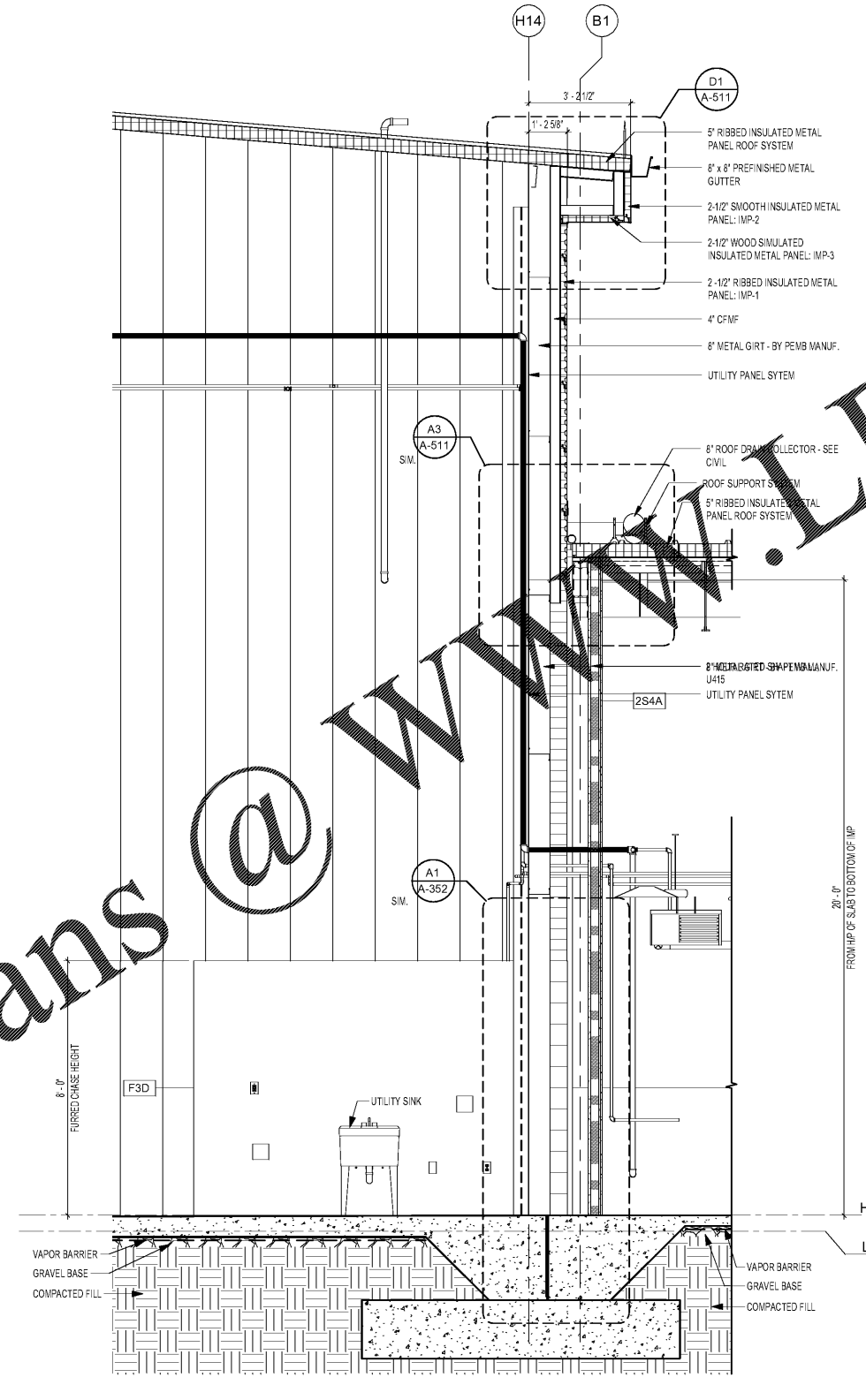


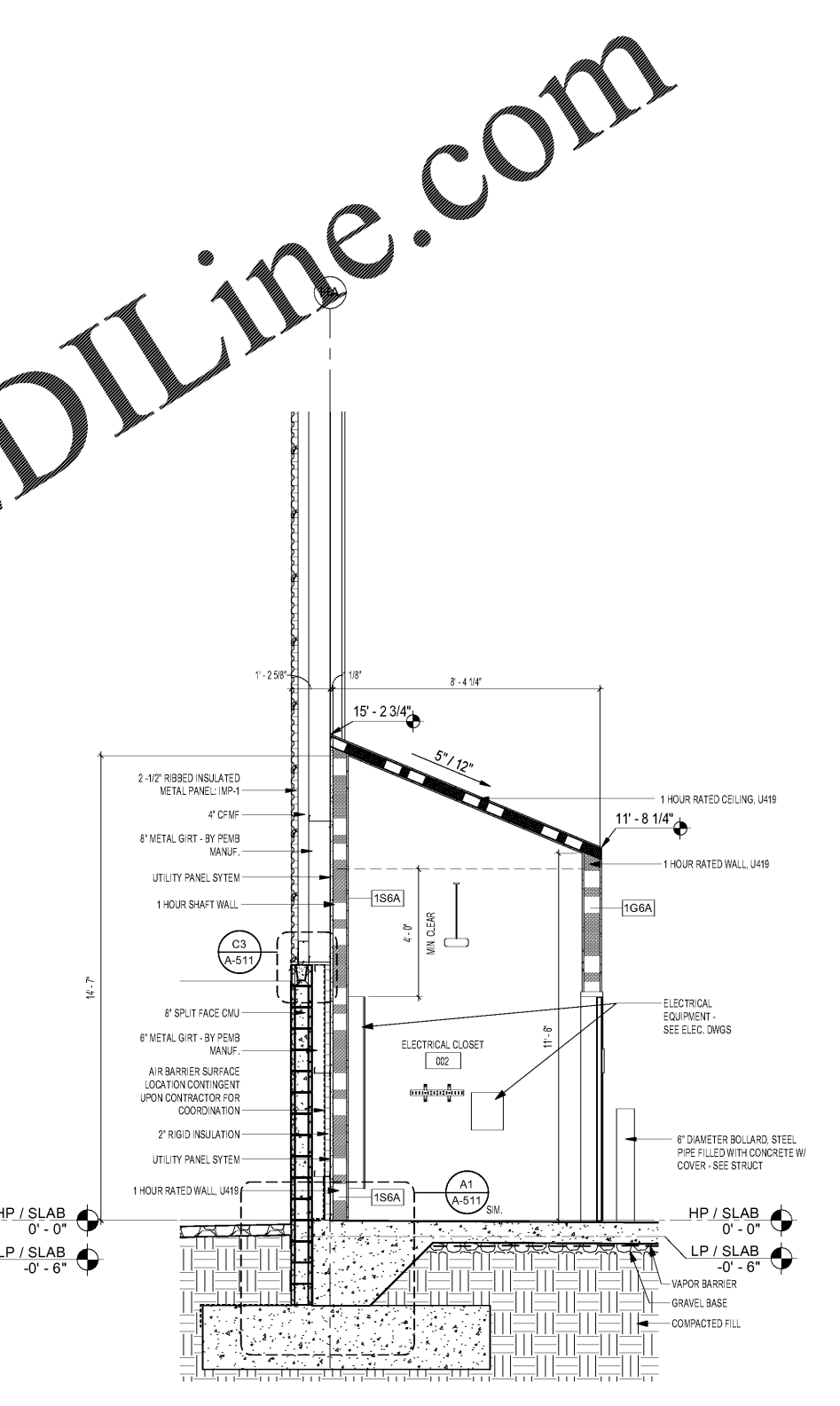
7/10/2020 3:02:47 AM BIM 360//1190557 - Pegasus/1190557_Pegasus_NS_Arch_CENTAL_v19_R3.rvt



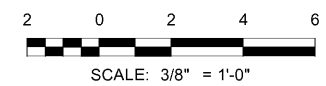
A1 SECTION - BETWEEN HANGAR & OFFICE
SCALE: 3/8" = 1'-0"



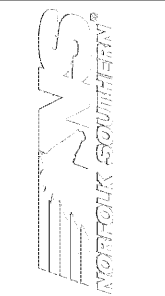
A3 SECTION - BETWEEN HANGAR & OFFICE
SCALE: 3/8" = 1'-0"



A5 SECTION - ELECTRICAL CLOSET
SCALE: 3/8" = 1'-0"



WWW.LDILine.com



MARK	DESCRIPTION	DATE

DESIGNED BY: E. Ames	CHECKED BY: K. Webb-Teke
PROJECT NO.: 1190557	DATE:
ISSUED FOR CONSTRUCTION	
DC-MM-YY	

NORFOLK SOUTHERN CORP.
1200 PEACHTREE STREET, NE
ATLANTA, GEORGIA 30309
404-525-1230

POND
3000 Peachtree Lane, Suite 200
Atlanta, Georgia 30328
Phone (404) 338-7740
Fax (404) 338-7740
LOG# NO. 1190557

CORPORATE ARCHITECT HANGAR FOR NORFOLK SOUTHERN CORPORATION
FULTON COUNTY AIRPORT - BROWN FIELD (FTY)
382 AVIATION CIRCLE, SUITE 200
ATLANTA, GEORGIA 30338

**HANGAR EXTERIOR WALL
SECTIONS**

SHEET ID
A-352