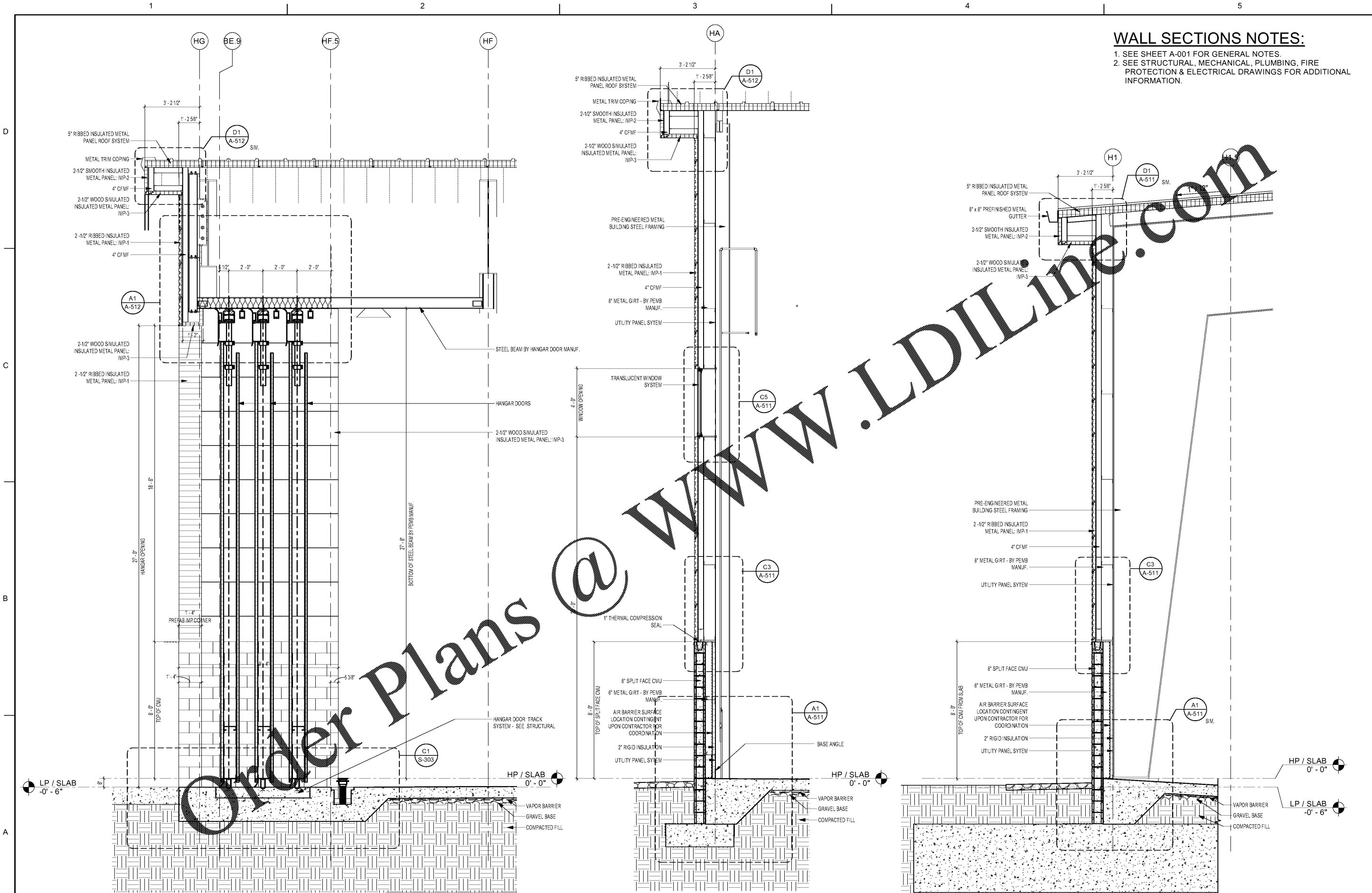


7/10/2020 3:02:44 AM BIM 360//1190557 - Pegasus//1190557_Pegasus_NS_Arch_CENTAL_v19_R3.rvt

WALL SECTIONS NOTES:

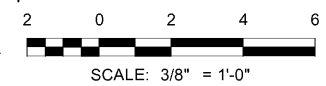
1. SEE SHEET A-001 FOR GENERAL NOTES.
2. SEE STRUCTURAL, MECHANICAL, PLUMBING, FIRE PROTECTION & ELECTRICAL DRAWINGS FOR ADDITIONAL INFORMATION.



A1 SECTION - HANGAR DOOR
SCALE: 3/8" = 1'-0"

A3 SECTION - HANGAR TYPICAL WALL
SCALE: 3/8" = 1'-0"

A5 SECTION - HANGAR TYPICAL WALL
SCALE: 3/8" = 1'-0"



MARK	DESCRIPTION	DATE

DESIGNED BY: E. Ames	CHECKED BY: K. Webb-Teague	ISSUED FOR CONSTRUCTION: E. Ames
DATE:	DATE:	DATE:

NORFOLK SOUTHERN CORPORATION
1200 PEACHTREE STREET, NE
ATLANTA, GEORGIA 30309
404-529-1230

POND
3000 Parkway Lane, Suite 300
Atlanta, Georgia 30329
Phone (478) 336-7740
FAX (478) 336-7740
LIC. NO. 1186547

CORPORATE ARCHITECT HANGAR FOR NORFOLK SOUTHERN CORPORATION
FULTON COUNTY AIRPORT - BROWN FIELD (FTY)
382 AVIATION CIRCLE, SUITE 200
ATLANTA, GEORGIA 30336

HANGAR EXTERIOR WALL SECTIONS

SHEET ID
A-351