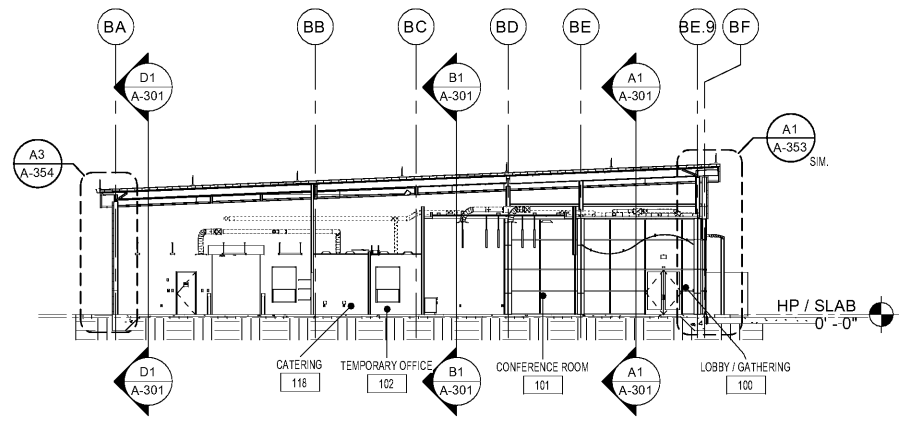
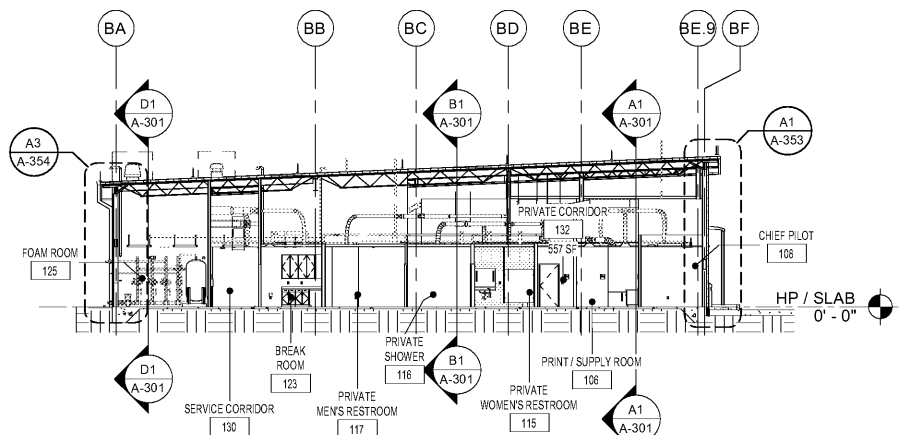


BUILDING SECTIONS NOTES:

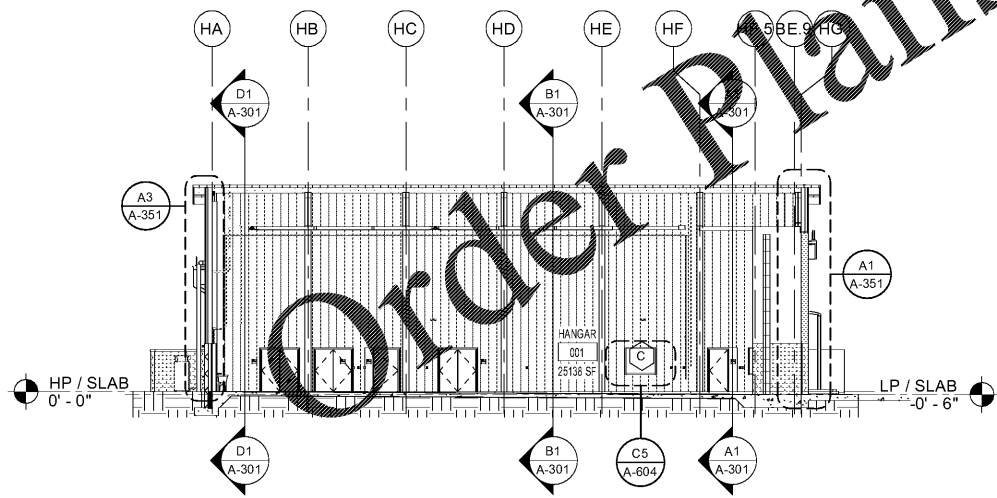
- 1. SEE SHEET A-001 FOR GENERAL NOTES.
- 2. SEE STRUCTURAL, MECHANICAL, PLUMBING, FIRE PROTECTION & ELECTRICAL DRAWINGS FOR ADDITIONAL INFORMATION.



D1 BUILDING SECTION
SCALE: 1/16" = 1'-0"



B1 BUILDING SECTION
SCALE: 1/16" = 1'-0"



A1 BUILDING SECTION
SCALE: 1/16" = 1'-0"

www.LDILine.com

MARK	DESCRIPTION	DATE

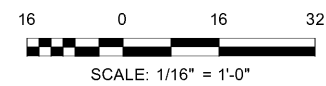
DESIGNED BY: E. Amis	CHECKED BY: K. Webb-Teke	ISSUED FOR CONSTRUCTION: E. Amis
DATE: 08/14/20	DATE: 08/14/20	DATE: 08/14/20

NORFOLK SOUTHERN CORP
1200 PEACHTREE STREET, NE
ATLANTA, GEORGIA 30309
404-529-1230

POND
3000 Peachtree Lane, Suite 3000
Atlanta, Georgia 30305
Phone: (404) 335-7740
Fax: (404) 335-7740
JOB NO. 11805547

CORPORATE AIRCRAFT HANGAR FOR NORFOLK SOUTHERN CORPORATION
FULTON COUNTY AIRPORT - BROWN FIELD (FTY)
382 AVIATION CIRCLE, SUITE 200
ATLANTA, GEORGIA 30338

BUILDING SECTIONS



SHEET ID
A-302