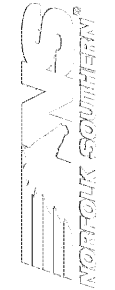
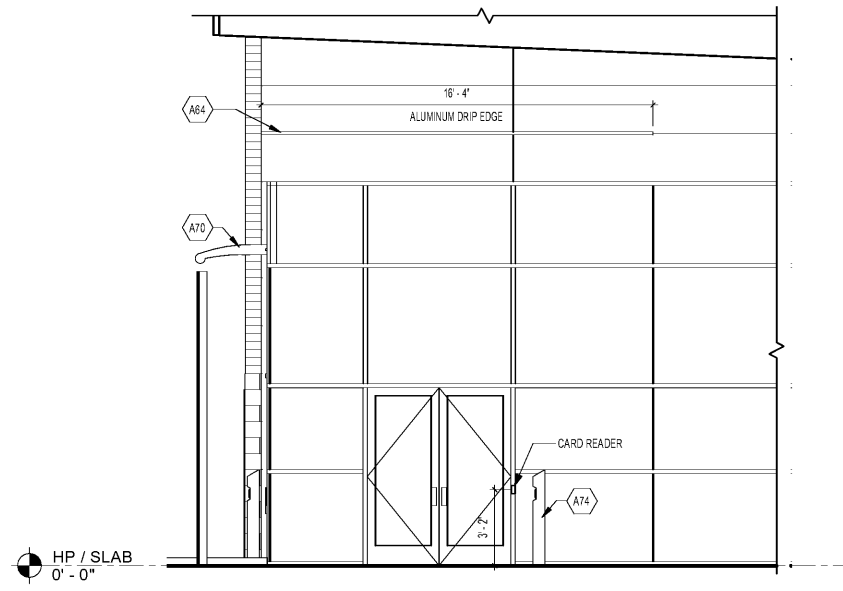


1 2 3 4 5



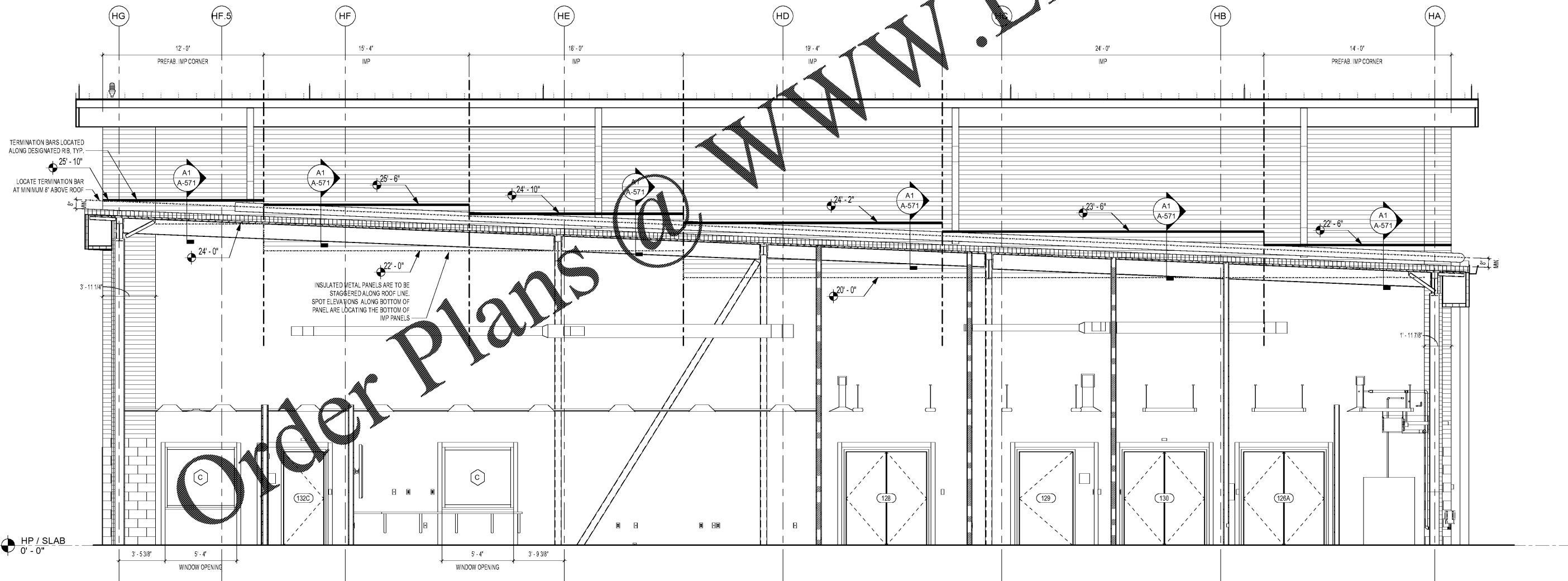
KEYNOTES:
(KEYNOTE NUMBERS ARE UNIFORM ACROSS ALL SHEETS AND SOME MAY NOT BE REQUIRED ON THIS SHEET)

KEY #	KEYNOTE DESCRIPTION
A64	ALUMINUM DRIP EDGE
A70	VERSOLEIL SUNSHADE
A74	ADA POST WITH ACTUATOR, SST. FINISH



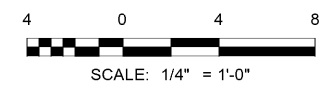
NOTE: CANOPY SYSTEM NOT SHOWN FOR CLARITY

D1 ELEVATION - ENTRY CONTROLS
SCALE: 1/4" = 1'-0"



A1 ELEVATION - FLASHING DIAGRAM ALONG ROOF SLOPE
SCALE: 1/4" = 1'-0"

NOTE: SPOT ELEVATIONS OF TERMINATION BARS ARE LOCATED AT THE TOP OF THE RIB THAT THE TERMINATION BAR IS TO BE FASTENED TO. TERMINATION BARS RUN THE FULL LENGTH OF INSULATED METAL PANEL DIMENSIONED.



WWW.LDILine.com

MARK	DESCRIPTION	DATE

DESIGNED BY:
ARCHITECT
B. BROWN

CHECKED BY:
K. WEBB

SUBMITTED BY:
E. ARMSTRONG

ISSUED FOR CONSTRUCTION:
DD-MM-YYYY

NORFOLK SOUTHERN CORP
1200 PEACHTREE STREET, NE
ATLANTA, GEORGIA 30309

POND
3000 Peachtree Lane, Suite 200
Atlanta, GA 30328
Phone (678) 335-7740
Logo No. 1185557

CORPORATE AIRCRAFT HANGAR FOR NORFOLK SOUTHERN CORPORATION
FULTON COUNTY AIRPORT - BROWN FIELD (FTY)
3827 AVIATION CIRCLE, SUITE 200
ATLANTA, GEORGIA 30338

ENLARGED EXTERIOR ELEVATIONS

SHEET ID
A-205

7/10/2020 3:02:25 AM BIM 360/11190557 - Pegasus/1190557_Pegasus_NS_Arch_CENTRAL_v19_R3.rvt