

EXTERIOR ELEVATIONS NOTES:

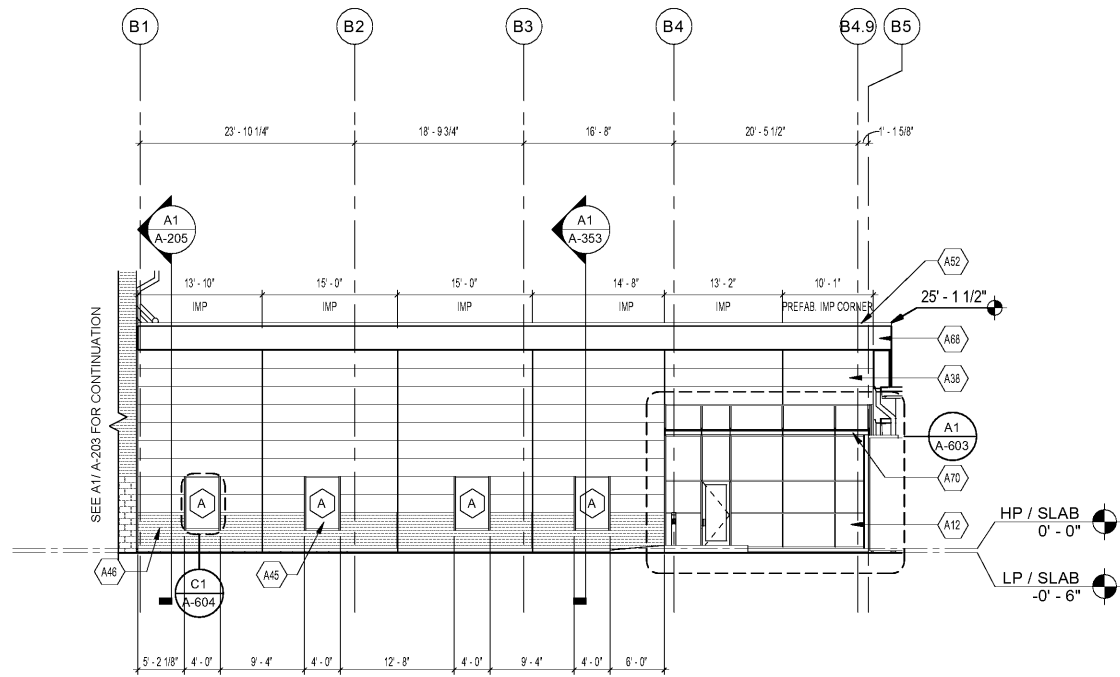
1. SEE SHEET A-001 FOR GENERAL NOTES.
2. SEE STRUCTURAL, MECHANICAL, PLUMBING, FIRE PROTECTION & ELECTRICAL DRAWINGS FOR ADDITIONAL INFORMATION.
3. SEE ROOF PLANS AND BUILDING ELEVATIONS FOR LOCATIONS OF DOWNSPOUTS.
4. FINISH ELEVATION 0'-0" IS FOR ARCHITECTURE REFERENCE ONLY.

KEYNOTES:

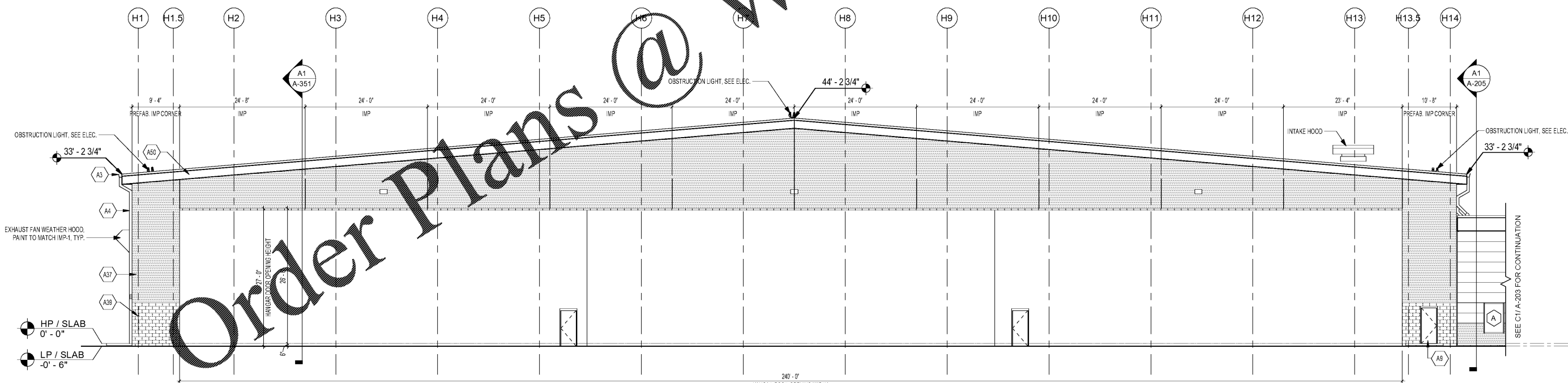
(KEYNOTE NUMBERS ARE UNIFORM ACROSS ALL SHEETS AND SOME MAY NOT BE REQUIRED ON THIS SHEET)

KEY #	KEY NOTE DESCRIPTION
A3	8" x 8" REFINISHED METAL GUTTER
A4	6" x 6" REFINISHED METAL DOWNSPOUTS; COORDINATE WITH CIVIL FOR UNDERGROUND WATER CONNECTION
A9	HOLLOW METAL FRAME & DOOR SYSTEM - COLOR:TBD
A12	REINFORCED CURTAIN WALL SYSTEM
A1	2-1/2" RIBBED INSULATED METAL PANEL: IMP-1
A38	3" SMOOTH INSULATED METAL PANEL: IMP-5
A39	8" SPLIT FACE CMU
A45	INTEGRATED WINDOW SYSTEM
A46	3" RIBBED INSULATED METAL PANEL: IMP-4
A50	2-1/2" SMOOTH INSULATED METAL PANEL: IMP-2
A52	5" RIBBED INSULATED METAL PANEL ROOF SYSTEM
A68	3" SMOOTH INSULATED METAL PANEL: IMP-6
A70	VERSOLEIL SUNSHADE

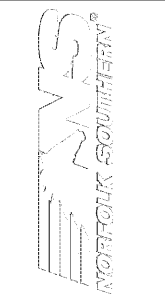
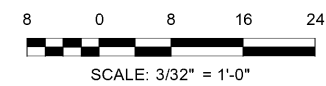
IMP #	TYPE	COLOR
IMP - 1	2.5" RIBBED	SILVERSMITH
IMP - 2	2.5" SMOOTH	WEATHERED ZINC
IMP - 3	2.5" SMOOTH	RED CEDAR
IMP - 4	3" RIBBED	WEATHERED ZINC
IMP - 5	3" SMOOTH	SILVERSMITH
IMP - 6	3" SMOOTH	WEATHERED ZINC
IMP - 7	3" SMOOTH	RED CEDAR



C1 SOUTH ELEVATION - OFFICE
SCALE: 3/32" = 1'-0"



A1 SOUTH ELEVATION - HANGAR
SCALE: 3/32" = 1'-0"



MARK	DESCRIPTION	DATE

DESIGNED BY:
 POND & COMPANY
 1200 PEACHTREE STREET, NE
 ATLANTA, GEORGIA 30309
 404-529-1230

CHECKED BY:
 K. WILSON

SUBMITTED BY:
 E. AMES

ISSUED FOR CONSTRUCTION:
 DC-MM-YY

NORFOLK SOUTHERN CORPORATION
 1200 PEACHTREE STREET, NE
 ATLANTA, GEORGIA 30309
 404-529-1230

POND
 3000 Peachtree Lane, Suite 200
 Atlanta, Georgia 30305
 Phone (404) 529-1230
 Fax (404) 529-1231

CORPORATE AIRCRAFT HANGAR FOR NORFOLK SOUTHERN CORPORATION
 FULTON COUNTY AIRPORT - BROWN FIELD (FTY)
 3827 AVIATION CIRCLE, SUITE 200
 ATLANTA, GEORGIA 30335

EXTERIOR ELEVATIONS

SHEET ID
A-203

7/10/2020 10:41:32 AM BIM 360//1190557 - Pegasus//1190557_Pegasus_NS_Arch_CENTRAL_v19_R3.rvt