

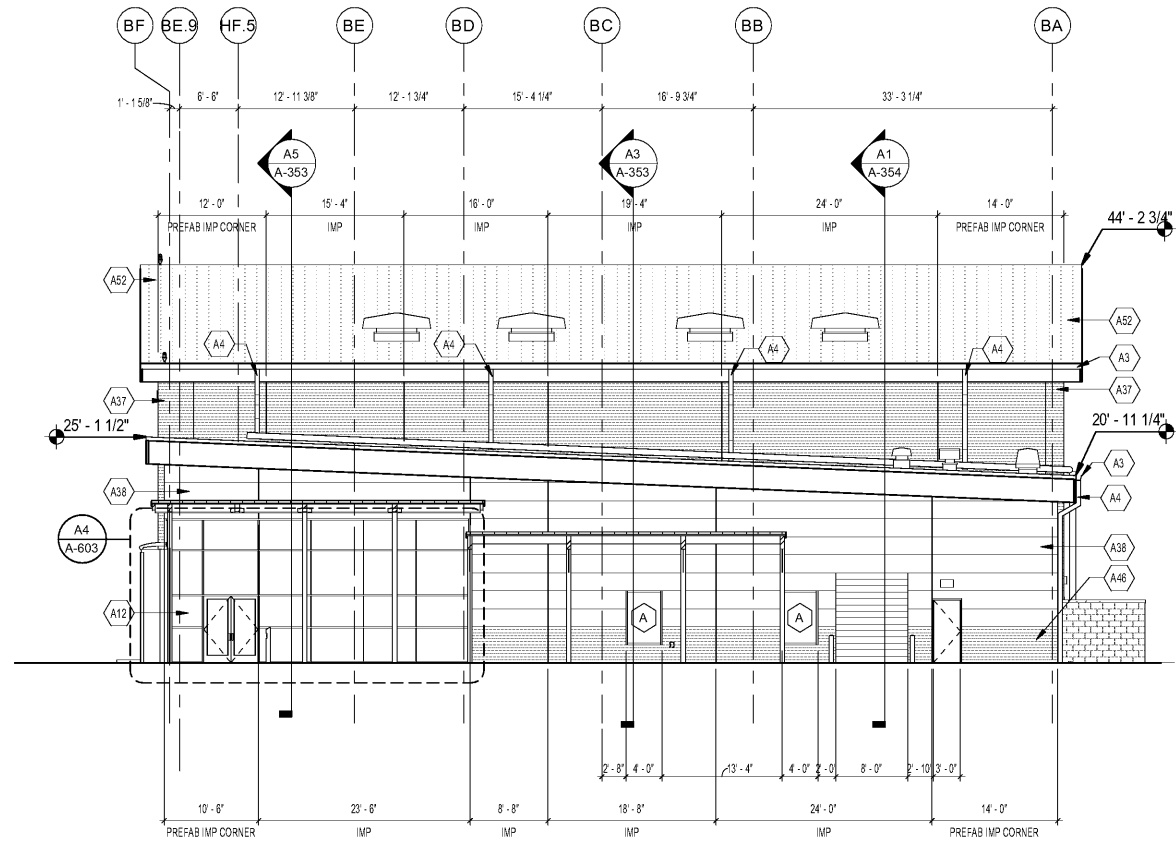
1 2 3 4 5

EXTERIOR ELEVATIONS NOTES:

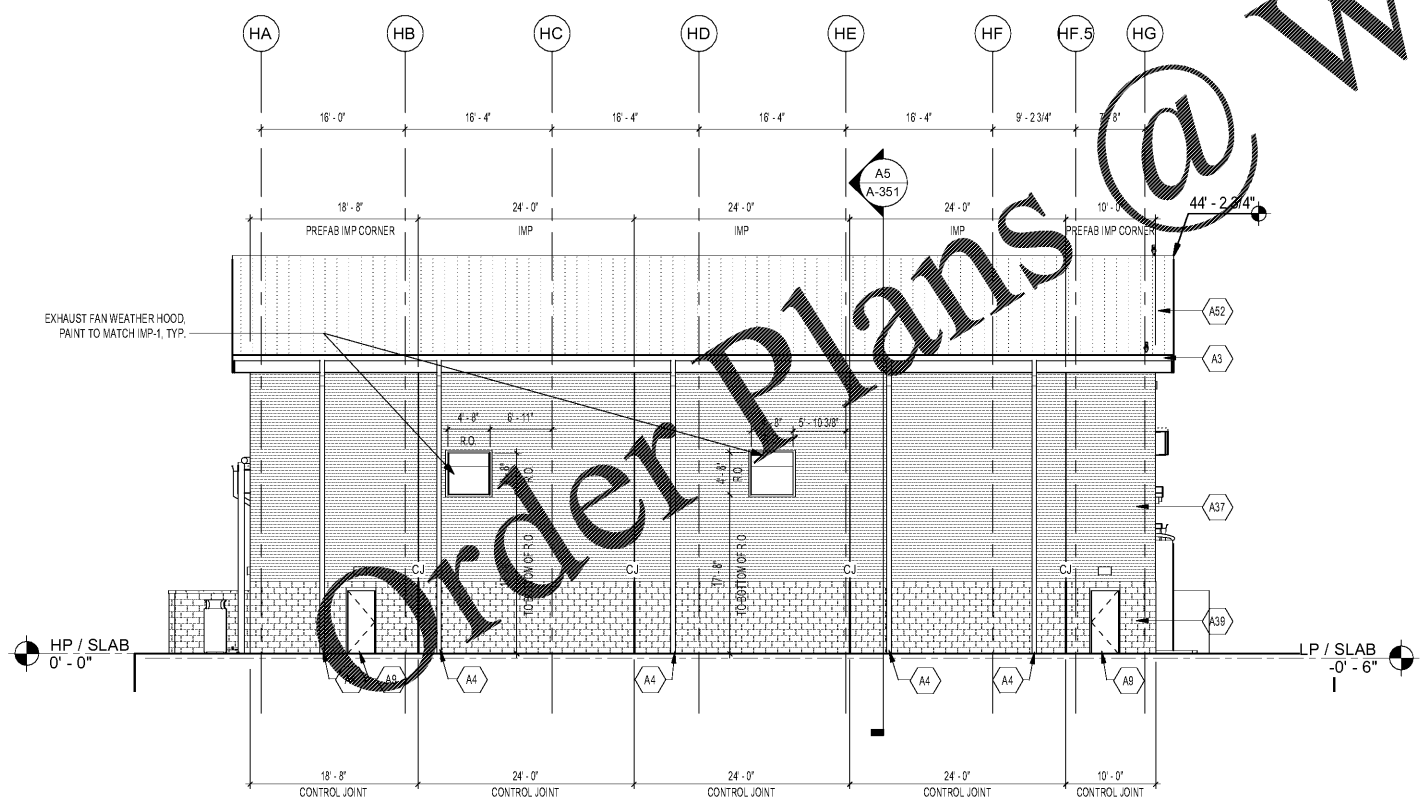
1. SEE SHEET A-001 FOR GENERAL NOTES.
2. SEE STRUCTURAL, MECHANICAL, PLUMBING, FIRE PROTECTION & ELECTRICAL DRAWINGS FOR ADDITIONAL INFORMATION.
3. SEE ROOF PLANS AND BUILDING ELEVATIONS FOR LOCATIONS OF DOWNSPOUTS.
4. FINISH ELEVATION 0'-0" IS FOR ARCHITECTURE REFERENCE ONLY.

KEY #	KEYNOTE DESCRIPTION
A3	8" x 8" PREFINISHED METAL GUTTER
A4	6" x 6" PREFINISHED METAL DOWNSPOUTS; COORDINATE WITH CIVIL FOR UNDERGROUND WATER CONNECTION
A9	ALLOW ME... FRAME & DOOR SYSTEM - COLOR:TBD
A12	REINFORCED CURTAIN WALL SYSTEM
A38	2-1/2" RIBBED INSULATED METAL PANEL: IMP-1
A39	SMOOTH INSULATED METAL PANEL: IMP-5
A46	8" SPLIT FACE CMU
A45	3" RIBBED INSULATED METAL PANEL: IMP-4
A52	5" RIBBED INSULATED METAL PANEL ROOF SYSTEM

IMP #	TYPE	COLOR
IMP - 1	2.5" RIBBED	SILVERSMITH
IMP - 2	2.5" SMOOTH	WEATHERED ZINC
IMP - 3	2.5" SMOOTH	RED CEDAR
IMP - 4	3" RIBBED	WEATHERED ZINC
IMP - 5	3" SMOOTH	SILVERSMITH
IMP - 6	3" SMOOTH	WEATHERED ZINC
IMP - 7	3" SMOOTH	RED CEDAR

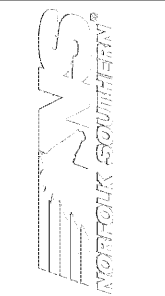


C1 EAST ELEVATION
SCALE: 3/32" = 1'-0"



A1 WEST ELEVATION
SCALE: 3/32" = 1'-0"

WWW.LDILINC.COM



MARK	DESCRIPTION	DATE

DESIGNED BY:
ARCHITECT
B. LINDA J. JONES

CHECKED BY:
K. WOODRIDGE

SUBMITTED BY:
E. ANNE

ISSUED FOR CONSTRUCTION:
DC-MM-YY

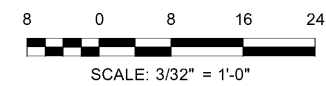
NORFOLK SOUTHERN CORPORATION
1200 PEACHTREE STREET, NE
ATLANTA, GEORGIA 30309
404-529-1230

POND
3000 Peachtree Lane, Suite 200
Atlanta, Georgia 30328
Phone (478) 335-7740
Fax (478) 335-7740
JOB NO. 1185547

CORPORATE AIRCRAFT HANGAR FOR NORFOLK SOUTHERN CORPORATION
FULTON COUNTY AIRPORT - BROWN FIELD (F1)
3827 AVIATION CIRCLE, SUITE 200
ATLANTA, GEORGIA 30336

EXTERIOR ELEVATIONS

SHEET ID
A-202



7/10/2020 3:02:14 AM BIM 360//1180557 - Pegasus/1180557_Pegasus_NS_Arch_CENTRAL_v19_R3.rvt