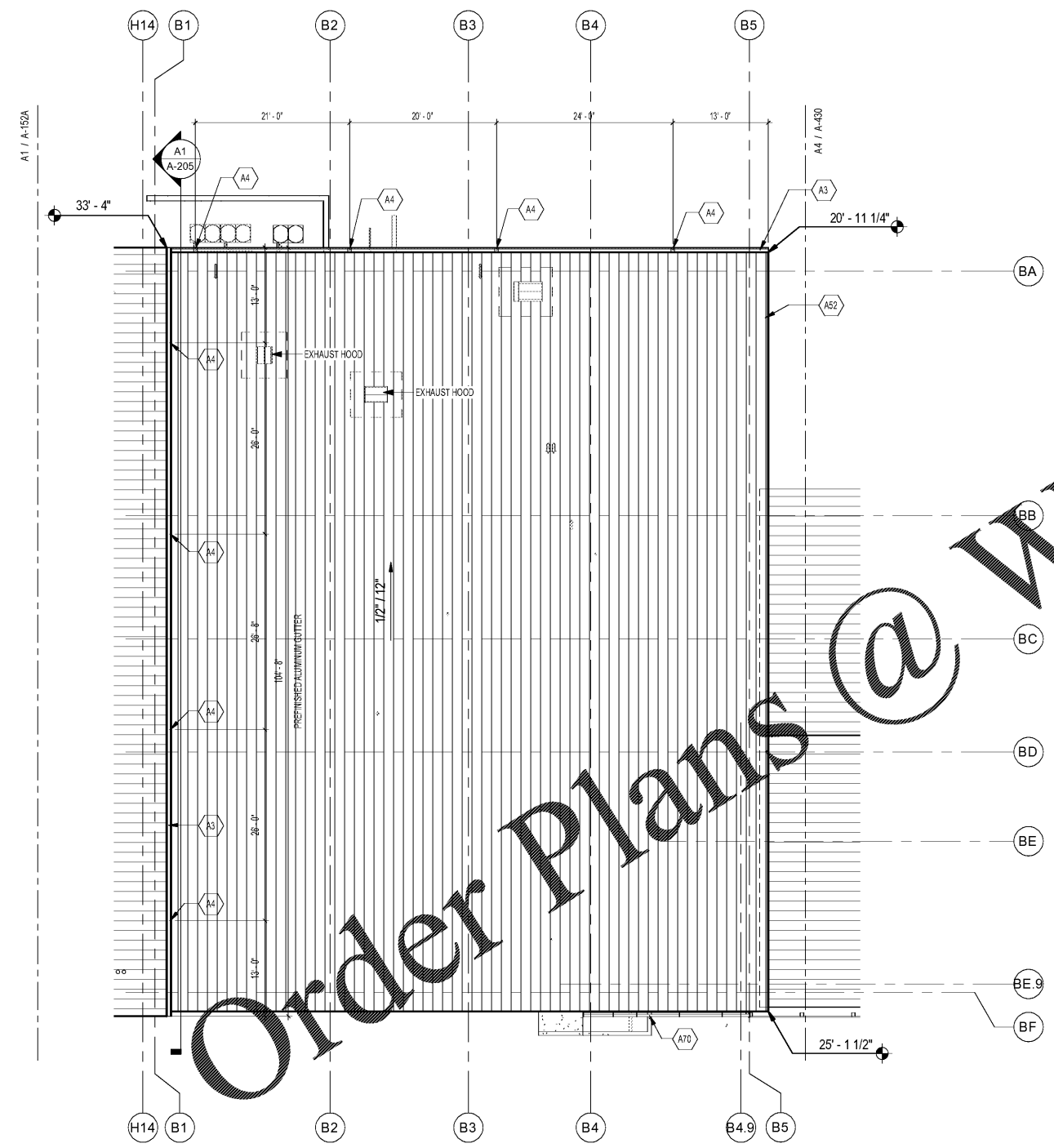


ROOF PLAN NOTES:

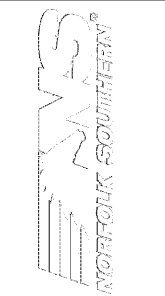
1. SEE SHEET A-001 FOR GENERAL NOTES.
2. SEE STRUCTURAL, MECHANICAL, PLUMBING, FIRE PROTECTION & ELECTRICAL DRAWINGS FOR ADDITIONAL INFORMATION.
3. SEE FLOOR PLANS AND BUILDING ELEVATIONS FOR LOCATIONS OF DOWNSPOUTS.
4. SNOW GUARDS ARE TO BE LOCATED ALONG THE ROOF PERIMETER OF LOW EAVE PER MANUFACTURER'S INSTRUCTIONS AND COORDINATED AROUND ROOF TOP EQUIPMENT.

KEYNOTES:
 (KEYNOTE NUMBERS ARE UNIFORM ACROSS ALL SHEETS AND SOME MAY NOT BE REQUIRED ON THIS SHEET)

KEY #	KEYNOTE DESCRIPTION
A1	8" x 6" PREFINISHED METAL GUTTER
A2	4" x 6" PREFINISHED METAL DOWNSPOUTS; COORDINATE WITH CIVIL FOR UNDERGROUND WATER CONNECTION
A52	5" RIBBED INSULATED METAL PANEL ROOF SYSTEM
A70	VERSOLEIL SUNSHADE



A1 ROOF PLAN
 SCALE: 3/32" = 1'-0"



MARK	DESCRIPTION	DATE

DESIGNED BY: A. Hines	CHECKED BY: K. Webb/10/06	ISSUED FOR CONSTRUCTION: DC-MM-YYYY
DATE: 10/06	DATE: 10/06	DATE: 10/06

NORFOLK SOUTHERN CORP
 1200 PEACHTREE STREET, NE
 ATLANTA, GEORGIA 30309
POND
 3002 Peachtree Lane, Suite 200
 Atlanta, Georgia 30328
 Phone (478) 335-7740
 LOG NO. 1185537

CORPORATE AIRCRAFT HANGAR FOR NORFOLK SOUTHERN CORPORATION
 FULTON COUNTY AIRPORT - BROWN FIELD (FTY)
 3827 AVIATION CIRCLE, SUITE 200
 ATLANTA, GEORGIA 30336
ROOF PLAN OFFICE

SHEET ID
A-153B