

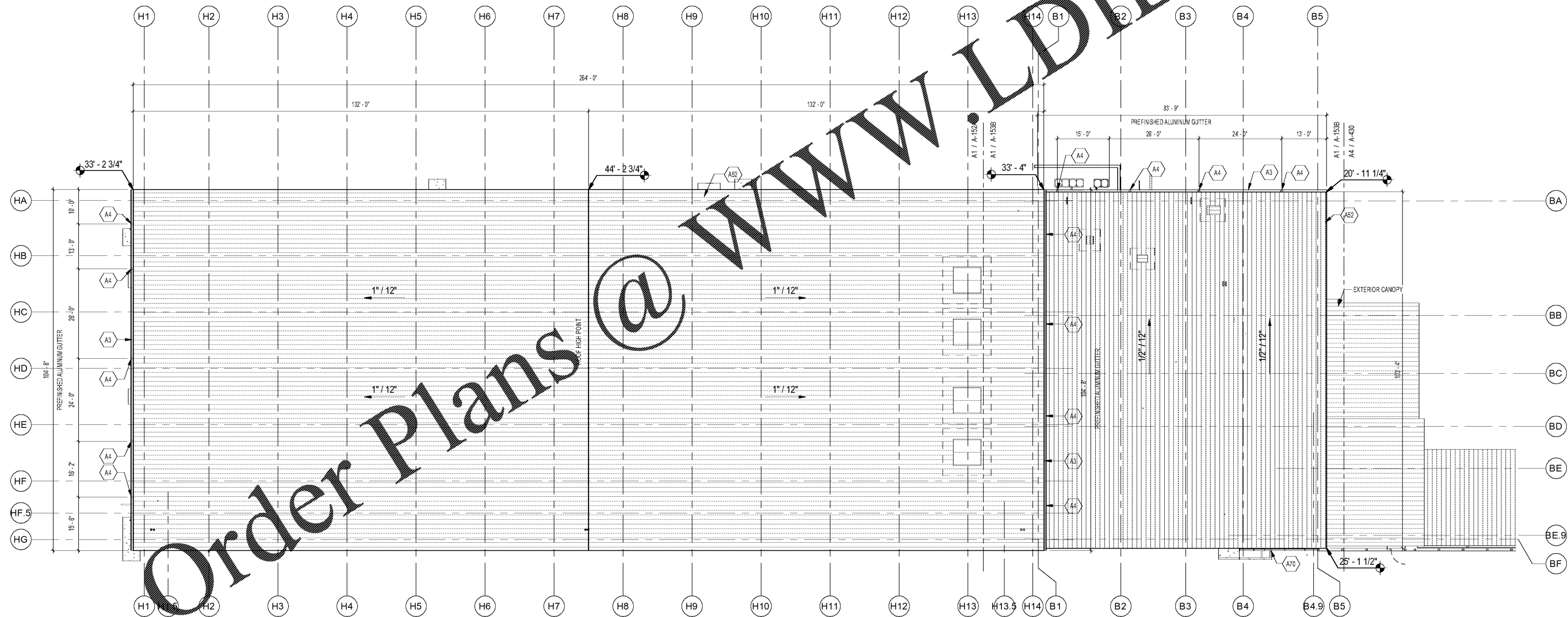
ROOF PLAN NOTES:

- SEE SHEET A-001 FOR GENERAL NOTES.
- SEE STRUCTURAL, MECHANICAL, PLUMBING, FIRE PROTECTION & ELECTRICAL DRAWINGS FOR ADDITIONAL INFORMATION.
- SEE FLOOR PLANS AND BUILDING ELEVATIONS FOR LOCATIONS OF DOWNSPOUTS.
- SNOW GUARDS ARE TO BE LOCATED ALONG THE ROOF PERIMETER OF LOW EAVE PER MANUFACTURER'S INSTRUCTIONS AND COORDINATED AROUND ROOF TOP EQUIPMENT.

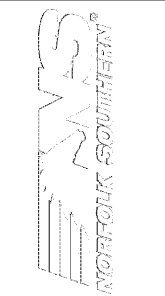
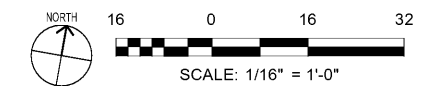
KEYNOTES:

(KEYNOTE NUMBERS ARE UNIFORM ACROSS ALL SHEETS AND SOME MAY NOT BE REQUIRED ON THIS SHEET)

KEY #	KEYNOTE DESCRIPTION
A3	8" x 8" PREFINISHED METAL GUTTER
A6	6" x 6" PREFINISHED METAL DOWNSPOUTS; COORDINATE WITH CIVIL FOR UNDERGROUND WATER CONNECTION
A70	5" RIBBED INSULATED METAL PANEL ROOF SYSTEM
A70	VERSOLEIL SUNSHADE



A1 ROOF PLAN
SCALE: 1/16" = 1'-0"



MARK	DESCRIPTION	DATE

DESIGNED BY: A. HARRIS	CHECKED BY: K. WILCOX
DATE: 11/19/20	ISSUED FOR CONSTRUCTION: DC-MM-YY

NORFOLK SOUTHERN CORP.
1200 PEACHTREE STREET, NE
ATLANTA, GEORGIA 30309
404-529-1230

POND
3602 Peachtree Lane, Suite 200
Atlanta, Georgia 30326
Phone: (770) 336-7740
Fax: (770) 336-7749
JOB NO. 11955517

CORPORATE AIRCRAFT HANGAR FOR NORFOLK SOUTHERN CORPORATION
FULTON COUNTY AIRPORT - BROWN FIELD (FTY)
3827 AVIATION CIRCLE, SUITE 200
ATLANTA, GEORGIA 30336

ROOF PLAN OVERALL

SHEET ID
A-151

7/10/2020 10:41:18 AM BIM 360://1190557 - Pegasus/1190557_Pegasus_NS_Arch_CENTRAL_v19_R3.rvt