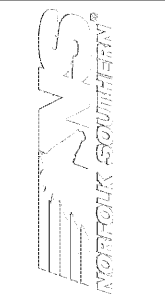
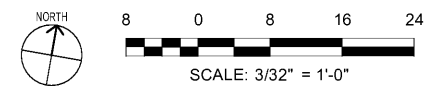


A1 REFLECTED CEILING PLAN - CANOPY
 SCALE: 3/32" = 1'-0"



MARK	DESCRIPTION	DATE

DESIGNED BY:
 E. Amis
 CHECKED BY:
 K. Webb/1086
 SUBMITTED BY:
 E. Amis
 ISSUED FOR CONSTRUCTION:
 DC-MM-YYYY

OWNER'S REPRESENTATIVE:
 NORFOLK SOUTHERN
 1200 PEACHTREE STREET, NE
 ATLANTA, GEORGIA 30309

NAME OF CONSULTANT:
 LDILINE
 3000 Peachtree Lane, Suite 200
 Atlanta, Georgia 30328
 Phone: (404) 335-7740
 Fax: (404) 335-7740
 Job No. 1190557

CORPORATE AIRCRAFT HANGAR FOR NORFOLK SOUTHERN CORPORATION
 FULTON COUNTY AIRPORT - BROWN FIELD (FTY)
 3825 AVIATION CIRCLE, SUITE 200
 ATLANTA, GEORGIA 30338

REFLECTED CEILING PLAN - CANOPY

SHEET ID
A-131C