

KEYNOTES:
 (KEYNOTE NUMBERS ARE UNIFORM ACROSS ALL SHEETS AND SOME MAY NOT BE REQUIRED ON THIS SHEET)

KEY #	KEYNOTE DESCRIPTION
A3	8" x 8" PREFINISHED METAL GUTTER
A4	6" x 6" PREFINISHED METAL DOWNSPOUTS; COORDINATE WITH CIVIL FOR UNDERGROUND WATER CONNECTION
A57	8" ROOF DRAIN COLLECTOR - SEE CIVIL
A70	VERSOLEIL SUNSHADE

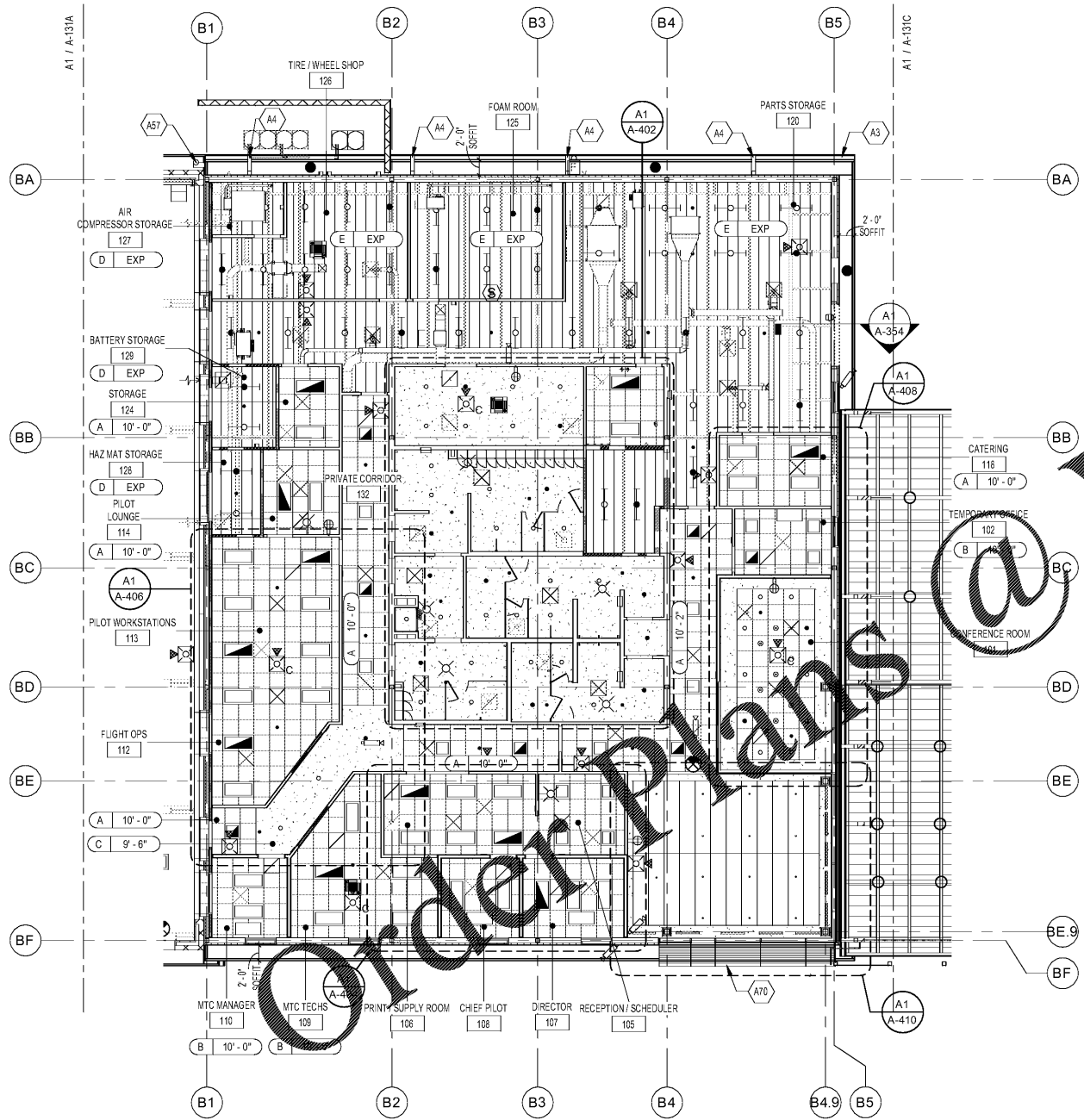
GENERAL RCP SHEET NOTES:

- ALL MATERIAL EXPOSED WITHIN A RETURN AIR CEILING PLENUM SHALL BE NONCOMBUSTIBLE OR SHALL BE LIMITED IN COMBUSTIBILITY AND HAVE A FLAME SPREAD INDEX OF 25 MAX. AND A SMOKE-DEVELOPMENT INDEX OF 50 MAX., PER ASTM E84.
- IN LATRINES, TOILETS, LOCKER ROOMS AND JANITOR CLOSETS ALL GYPSUM BOARD CEILINGS SHALL BE WATER RESISTANT GYPSUM BOARD.
- ALL CEILING MOUNTED DEVICES SHALL BE CENTERED IN BOTH DIRECTIONS IN ACOUSTICAL CEILING PANELS U.N.O. CENTER SPRINKLER HEADS IN ACOUST. CEILING PANELS WHERE THEY OCCUR - COORDINATE THE LOCATION OF THE SPRINKLER HEADS WITH OTHER CEILING FIXTURES AND EQUIPMENT IN ALL CEILING. ENSURE THAT A SYMMETRICAL AND BALANCED ARRANGEMENT IS INSTALLED. CONTRACTING OFFICER IS TO REVIEW INSTANCE OF NON-EQUAL SPACING PRIOR TO INSTALLATION.
- CEILING HEIGHTS INDICATED (I.E. 10'-0") ARE RELATIVE TO THE FINISH FLOOR ELEVATION OF THE ROOM FOR WHICH THEY ARE INDICATED.
- CEILING GRIDS SHALL BE ORIENTED WITHIN SPACES AS SHOWN, U.N.O. FULL TILE (FT) WHERE INDICATED, SHALL ABUT DESIGNATED WALL. LIMIT PARTIAL PANELS TO NO LESS THAN 6".
- DEVICES HAVE BEEN SHOWN FOR COORDINATION PURPOSES. ALL DEVICES MAY NOT BE SHOWN. SEE MECHANICAL, ELECTRICAL, PLUMBING AND FIRE PROTECTION DRAWINGS FOR ITEMS NOT SHOWN ON REFLECTED CEILING PLANS. CONTACT THE ARCHITECT IF ANY CONFLICTS OCCUR.
- THE CONTRACTOR SHALL ENSURE THE INSTALLATION OF ALL DEVICES INDICATED ON THE ENR. DRAWINGS. SEE MECHANICAL, ELECTRICAL, PLUMBING AND FIRE PROTECTION DRAWINGS FOR ITEMS NOT SHOWN ON REFLECTED CEILING PLANS.
- AT WALLS WITH SOUND ATTENUATION BLANKETS PROVIDE SOUND ATTENUATION BLANKETS ON CEILING TO 2'-0" ON BOTH SIDES OF WALL EXCEPT AT WALLS WITH SOUND ATTENUATION BLANKETS EXTENDING TO STRUCTURE.
- COORDINATE ACCESS PANELS WITH MECHANICAL BALANCING DAMPER LOCATION.
- FAN SUPPLIER TO SUPPLY ALL SUPPLEMENTAL SUPPORT TO ATTACH SYSTEM TO PRIMARY BUILDING FRAME.

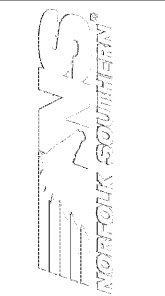
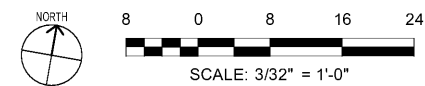
REFLECTED CEILING PLAN LEGEND

- DOWNLIGHT- CENTER IN ACOUST. CEILING PANELS, AND METAL CEILING TYP., U.N.O.
- EMERGENCY DOWNLIGHT- CENTER IN ACOUST. CEILING PANELS, AND METAL CEILING TYP., U.N.O.
- ⊙ PENDANT LIGHT FIXTURE, SEE ELEC.
- LINEAR PENDANT LIGHT FIXTURE
- LINEAR EMERGENCY PENDANT LIGHT FIXTURE
- 2' X 2' LAY-IN LIGHT FIXTURE
- 2' X 2' EMERGENCY LAY-IN LIGHT FIXTURE
- 2' X 4' LAY-IN LIGHT FIXTURE
- 2' X 4' EMERGENCY LAY-IN LIGHT FIXTURE
- ▬ LINEAR SLOT DIFFUSERS
- ⊗ 24" X 24" MECH. DIFFUSERS
- ⊘ 24" X 24" MECH. RETURN AIR GRILLES
- ⊙ 24" X 24" MECH. EXHAUST
- ⊗ WALL MOUNTED EXIT SIGN
- ⊙ CEILING MOUNTED EXIT SIGN
- ⊙ OCCUPANCY SENSOR, SEE ELEC.
- ⊗ CEILING MOUNTED STROBE
- ⊙ SMOKE DETECTOR
- ⊗ SPEAKER STROBE - SEE FIRE PROTECTION
- WALL PACK LIGHT - SEE ELEC.
- ⊗ HVAC CASSETTE UNIT - SEE MECH.
- LIGHT FIXTURE, SEE ELEC.

CEILING SCHEDULE	
TYPE	DESCRIPTION
A	2'-0" X 2'-0" ACT SYSTEM
B	HIGH CAC 2'-0" X 2'-0" ACT SYSTEM
C	ONE LAYER GYPSUM WALL BOARD
D	1 HOUR RATED ASSEMBLY U419
E	EXPOSED TO STRUCTURE



A1 REFLECTED CEILING PLAN - OFFICE
 SCALE: 3/32" = 1'-0"



DATE	DESCRIPTION	MARK

DESIGNED BY:
 ARCHITECT: NORFOLK SOUTHERN
 1200 PEACHTREE STREET, NE
 ATLANTA, GEORGIA 30309
 404-525-1230

CHECKED BY:
 B. LINDA J. LINDA
 K. WILSON
 E. AMES

ISSUED FOR CONSTRUCTION:
 DD-MM-YYYY

CORPORATE ARCHITECT HANGAR FOR NORFOLK SOUTHERN CORPORATION
 FULTON COUNTY AIRPORT - BROWN FIELD (FTY)
 3827 AVIATION CIRCLE, SUITE 200
 ATLANTA, GEORGIA 30336

REFLECTED CEILING PLAN - OFFICE

SHEET ID
A-131B