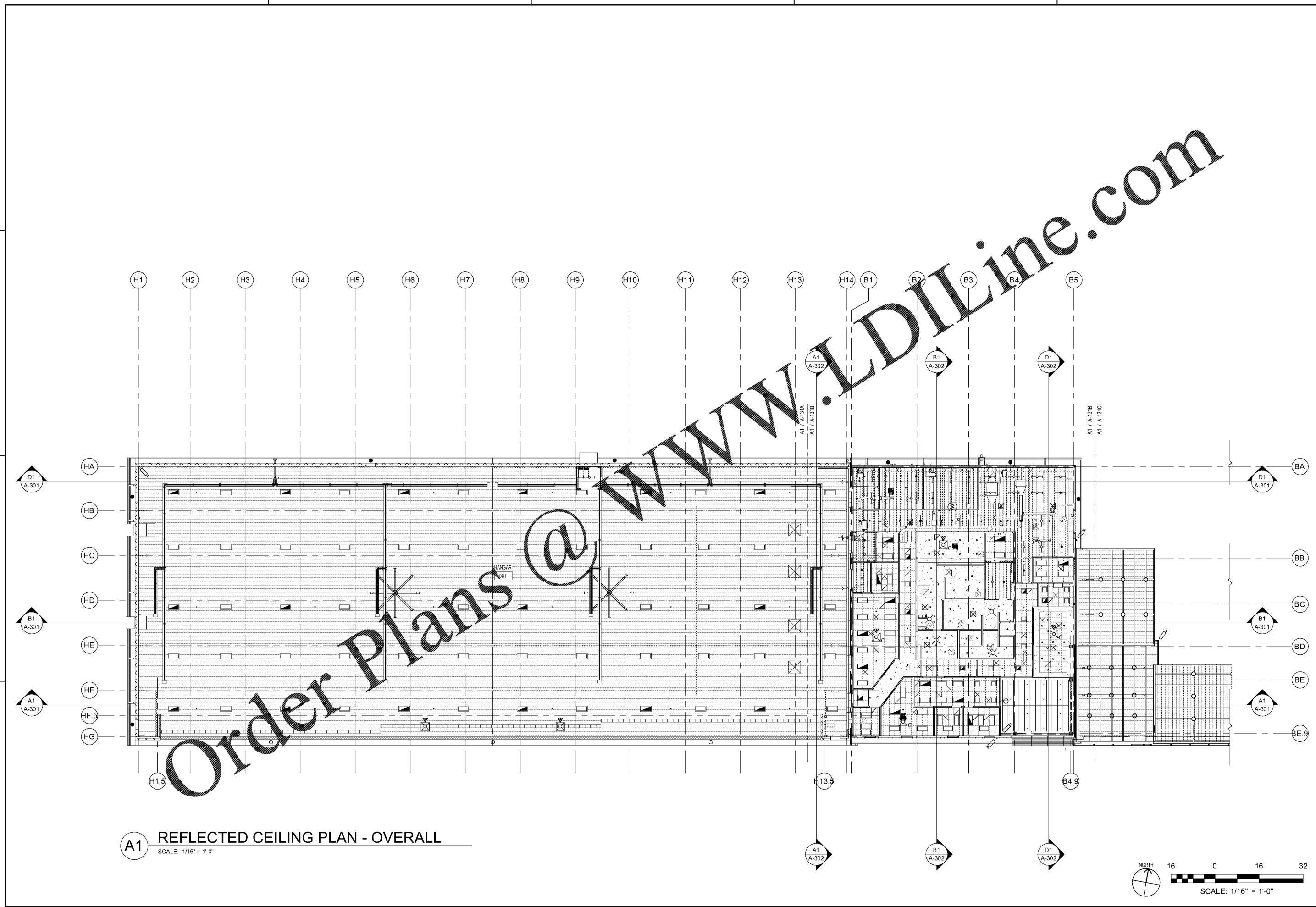
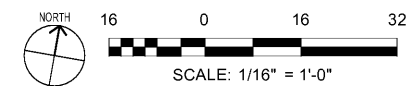


7/10/2020 1:24:53 PM BIM 360//1190557 - Pegasus/1190557_Pegasus_NS_Arch_CENTAL_v19_R3.rvt



A1 REFLECTED CEILING PLAN - OVERALL
 SCALE: 1/16" = 1'-0"



DESIGNED BY: A. Parks	DATE
CHECKED BY: K. Webb/10/18	DESCRIPTION
SUBMITTED BY: E. Ames	MARK
ISSUED FOR CONSTRUCTION: DC-MM-YY	

NORFOLK SOUTHERN CORP
 1200 PEACHTREE STREET, NE
 ATLANTA, GEORGIA 30309
POND
 3000 Peachtree Lane, Suite 200
 Atlanta, Georgia 30328
 Phone (770) 335-7740
 Job No. 1190557

CORPORATE AIRCRAFT HANGAR FOR NORFOLK SOUTHERN CORPORATION
 FULTON COUNTY AIRPORT - BROWN FIELD (FTY)
 3827 AVIATION CIRCLE, SUITE 200
 ATLANTA, GEORGIA 30338
REFLECTED CEILING PLAN - OVERALL
 SHEET ID
A-131

