

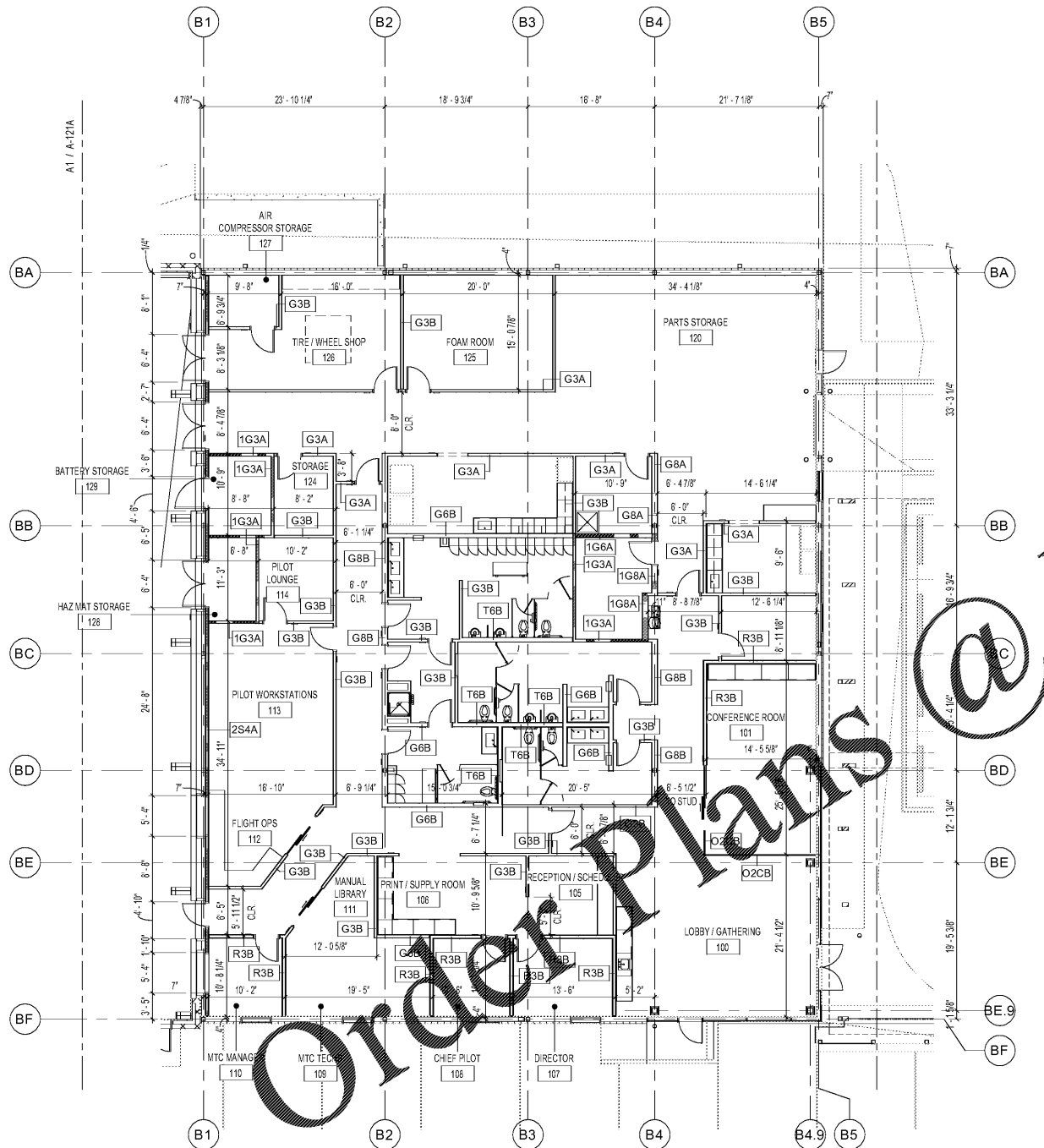
DIMENSIONED PLAN NOTES:

- 1. SEE SHEET A-001 FOR GENERAL NOTES & ABBREVIATIONS.
- 2. SEE STRUCTURAL, MECHANICAL, PLUMBING, FIRE PROTECTION, ELECTRICAL & INTERIOR DRAWINGS FOR ADDITIONAL INFORMATION.
- 3. PARTITIONS INDICATED WITH . SEE SHEET A-005 & A-006 FOR PARTITION TYPES & DETAILS.
- 4. DIMENSIONS OF EXTERIOR WALLS ARE FACE OF CMU & INTERIOR WALLS ARE TO FACE OF METAL STUD, U.N.O.

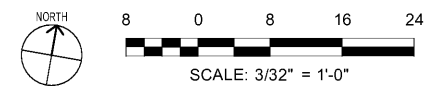


WWW.LDILine.com

D
C
B
A



A1 DIMENSIONED PLAN - OFFICE
SCALE: 3/32" = 1'-0"



| MARK | DESCRIPTION | DATE |
|------|-------------|------|
| | | |
| | | |
| | | |
| | | |
| | | |
| | | |

DESIGNED BY: **LDI**
 CHECKED BY: **LDI**
 SUBMITTED BY: **LDI**
 ISSUED FOR CONSTRUCTION: **LDI**

POND
 NORFOLK SOUTHERN CORP
 1200 PEACHTREE STREET, NE
 ATLANTA, GEORGIA 30309
 404-529-1230
 3000 Peachtree Lane, Suite 200
 Atlanta, Georgia 30329
 Phone: (478) 338-7749
 Fax: (478) 1186557

CORPORATE AIRCRAFT HANGAR FOR NORFOLK SOUTHERN CORPORATION
 FULTON COUNTY AIRPORT - BROWN FIELD (FTY)
 3827 AVIATION CIRCLE, SUITE 200
 ATLANTA, GEORGIA 30338

DIMENSIONED PLAN - OFFICE

SHEET ID
A-121B