

7/10/2020 3:01:19 AM BIM 360/1190557 - Pegasus/1190557_Pegasus_NS_Arch_CENTAL_V19_R3.rvt



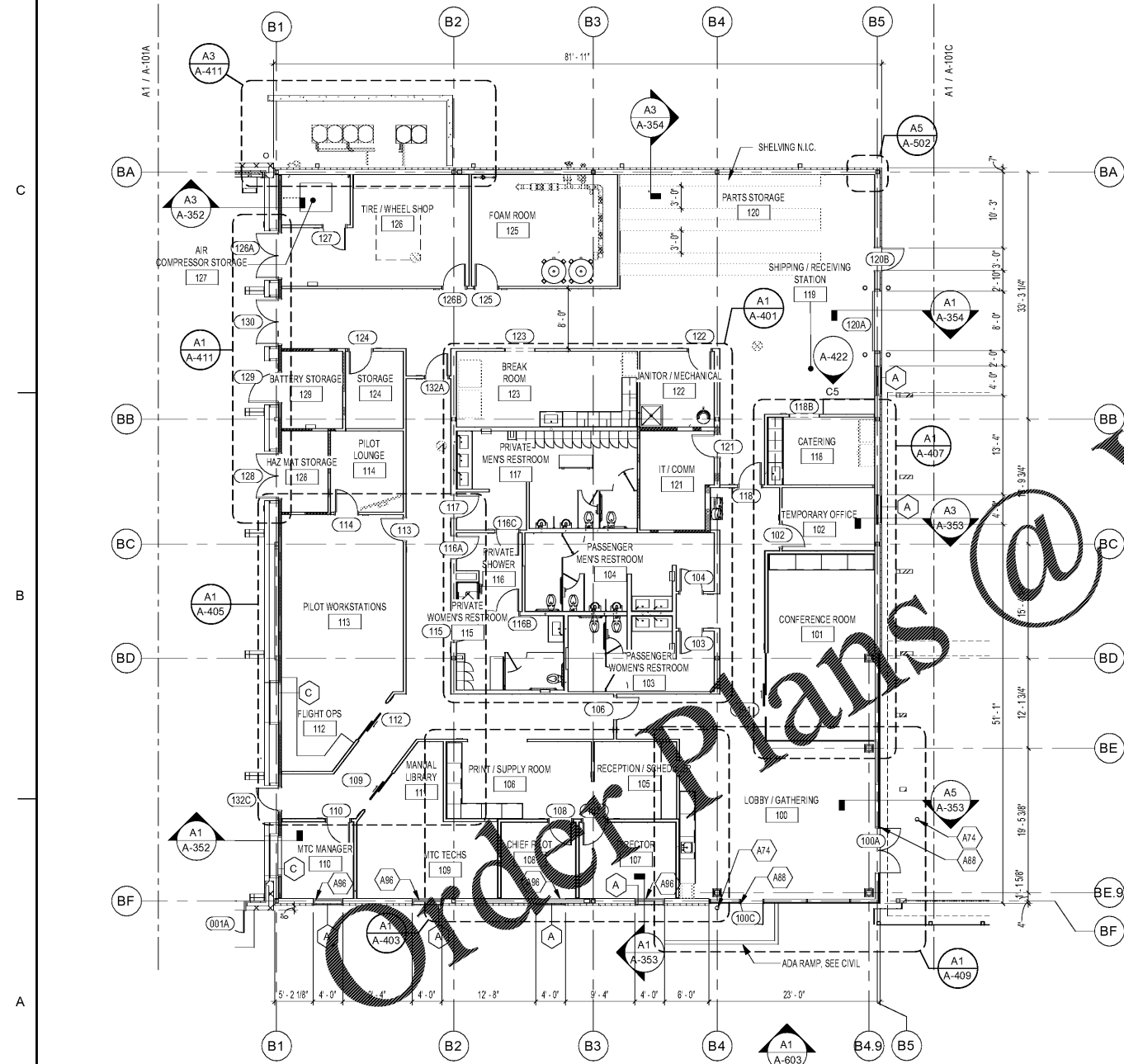
KEYNOTES:

(KEYNOTE NUMBERS ARE UNIFORM ACROSS ALL SHEETS AND SOME MAY NOT BE REQUIRED ON THIS SHEET)

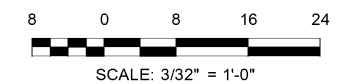
KEY #	KEYNOTE DESCRIPTION
A74	ADA POST WITH ACTUATOR, SST. FINISH
A88	CARD READER, SEE ELEC.
A96	MANUAL ROLLER SHADE

FLOOR PLAN NOTES:

1. SEE SHEET A-001 FOR GENERAL NOTES & ABBREVIATIONS
2. SEE SHEET A-002 FOR SYMBOLS & MATERIALS
3. SEE STRUCTURAL, MECHANICAL, PLUMBING, FIRE PROTECTION, ELECTRICAL & INTERIOR DRAWINGS FOR ADDITIONAL INFORMATION.
4. DOORS INDICATED WITH SEE SHEET A-601 FOR DOOR SCHEDULES & TYPES
5. WINDOWS INDICATED WITH SEE SHEET A-604 FOR WINDOW TYPES
6. REFER TO STRUCTURAL S-101A FOR TOP OF SLAB ELEVATIONS
7. SEE A-121 SERIES FOR INTERIOR PARTITION TAGS AND DIMENSIONS



A1 FLOOR PLAN - OFFICE
SCALE: 3/32" = 1'-0"



WWW.LDILine.com



MARK	DESCRIPTION	DATE

DESIGNED BY: A. Amis
CHECKED BY: J. Webb/1088
SUBMITTED BY: E. Amis
ISSUED FOR CONSTRUCTION: 02-20-2017

NORFOLK SOUTHERN CORP.
1200 PEACHTREE STREET, NE
ATLANTA, GEORGIA 30309
404-529-1230
2000 Peachtree Lane, Suite 200
Atlanta, Georgia 30309
Phone: (478) 336-7740
Fax: (478) 336-7740
JOB NO. 1190557

CORPORATE AIRCRAFT HANGAR FOR NORFOLK SOUTHERN CORPORATION
FULTON COUNTY AIRPORT - BROWN FIELD (FTY)
3627 AVIATION CIRCLE, SUITE 200
ATLANTA, GEORGIA 30336

FLOOR PLAN - OFFICE

SHEET ID
A-101B