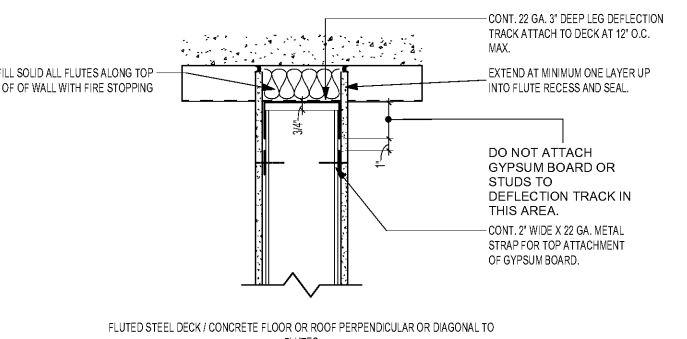
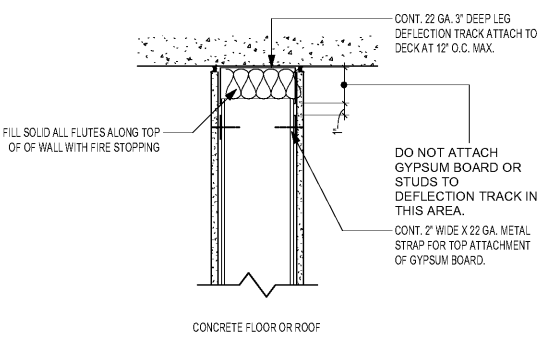


RATED OR SMOKE RESISTANT

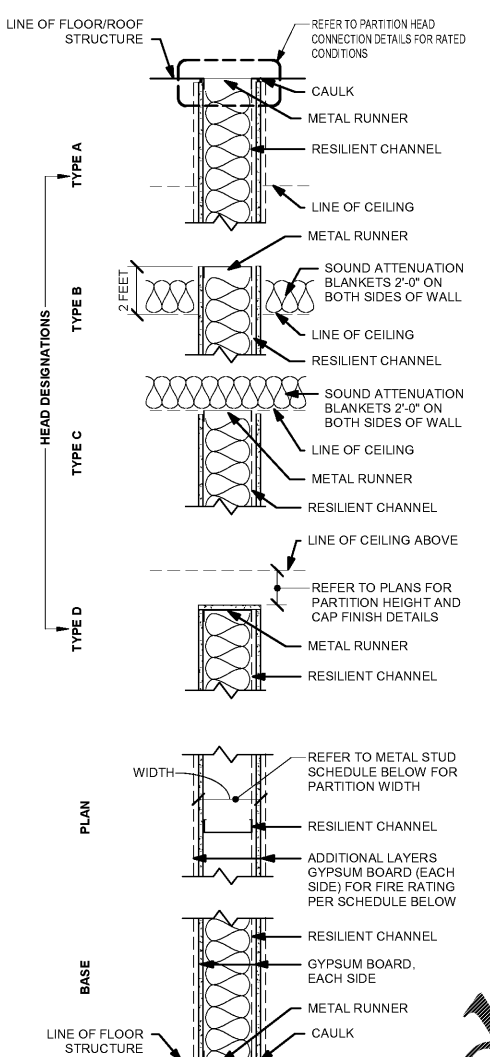


RATED OR SMOKE RESISTANT



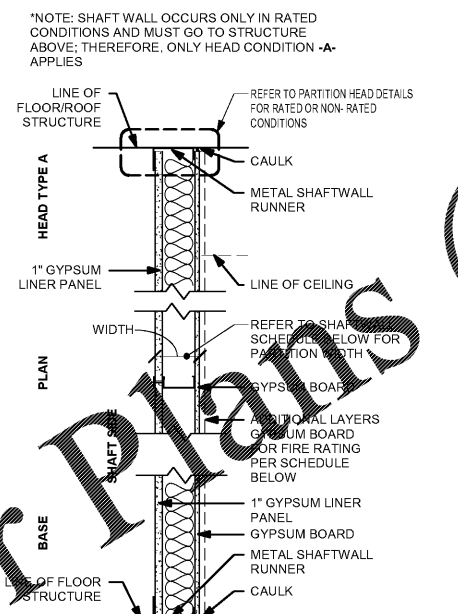
RATED OR SMOKE RESISTANT

RATED PARTITION HEAD CONNECTION DETAILS



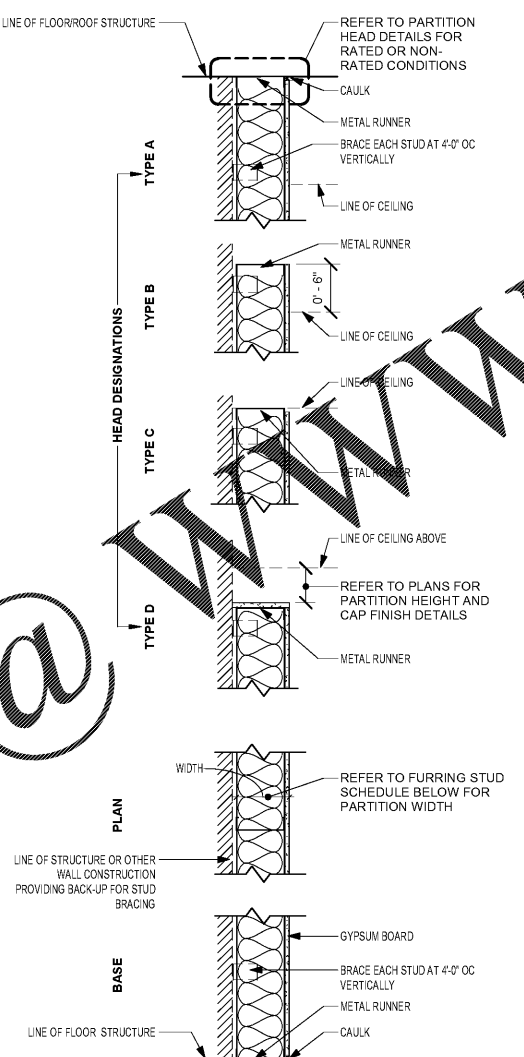
PARTITION TYPE P

| METAL STUD W/ RESILIENT CHANNEL | | | | |
|---------------------------------|------------|-------------|------------|--|
| MARK | STUD WIDTH | FIRE RATING | UL LISTING | |
| R3B | 3'-0.5/8" | 1 HR | U465 | |



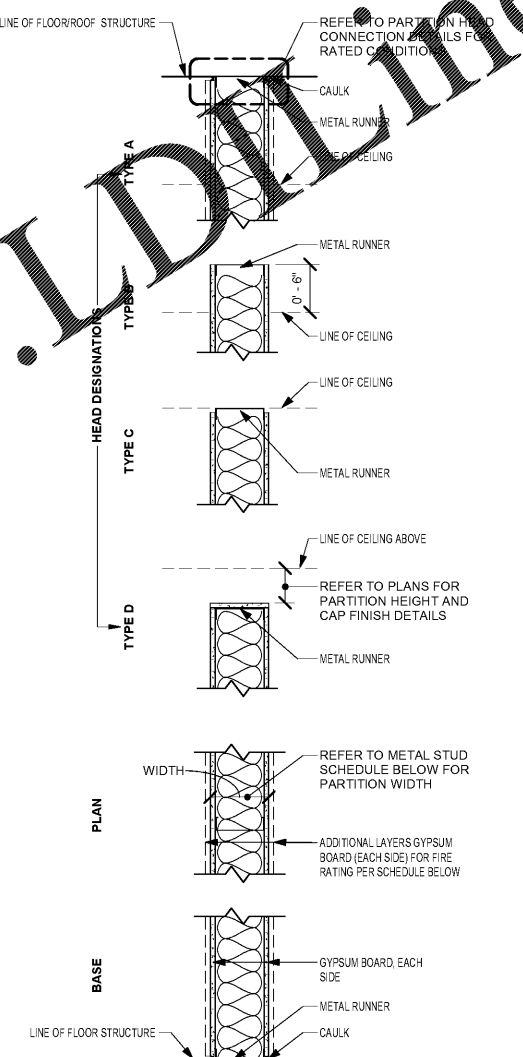
PARTITION TYPE S

| SHAFT WALL SCHEDULE | | | | |
|---------------------|------------|-----------------|-------------|------------|
| MARK | STUD WIDTH | PARTITION WIDTH | FIRE RATING | UL LISTING |
| 1S6A | 6" | 0'-6.5/8" | 1 HR | U415 |
| 2S4A | 4" | 0'-5.1/4" | 2 HR | U415 |



PARTITION TYPE F

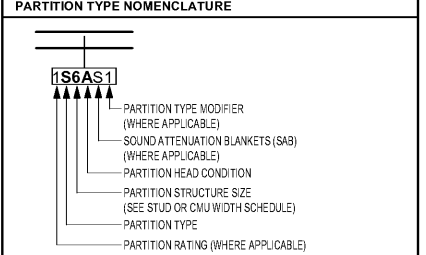
| FURRING STUD SCHEDULE | | | | |
|-----------------------|------------|-----------------|-------------|------------|
| MARK | STUD WIDTH | PARTITION WIDTH | FIRE RATING | UL LISTING |
| F3A | 3-5/8" | 4-1/4" | 0 HR | N/A |
| F3B | 3-5/8" | 4-1/4" | 0 HR | N/A |
| F3D | 3-5/8" | 4-1/4" | 0 HR | N/A |
| F6B | 6" | 6-5/8" | 0 HR | N/A |
| F6B | 8" | 6-5/8" | 0 HR | N/A |



PARTITION TYPE G

| METAL STUD SCHEDULE | | | | |
|---------------------|------------|-----------------|-------------|------------|
| MARK | STUD WIDTH | PARTITION WIDTH | FIRE RATING | UL LISTING |
| G3A | 3-5/8" | 4-7/8" | 0 HR | U419 |
| G3B | 3-5/8" | 4-7/8" | 0 HR | N/A |
| G6B | 6" | 7-1/4" | 0 HR | N/A |
| G8A | 8" | 9-1/4" | 0 HR | N/A |
| G8B | 8" | 9-1/4" | 0 HR | N/A |
| 1G3A | 3-5/8" | 4-7/8" | 1 HR | U419 |
| 1G6A | 6" | 7-1/4" | 1 HR | U419 |
| 1G8A | 8" | 9-1/4" | 1 HR | U419 |

- #### INTERIOR PARTITION GENERAL NOTES
- PARTITION TYPES DESCRIBE GENERAL REQUIREMENTS FOR PARTITIONS. REFER TO THE MANUFACTURER'S SPECIFICATIONS AND REQUIREMENTS OF APPLICABLE TESTING AGENCIES FOR SPECIFICS OF PARTITION CONSTRUCTION.
 - REFER TO "PARTITION TYPE NOMENCLATURE" FOR SYMBOLS USED TO IDENTIFY ADDITIONAL REQUIREMENTS AND MODIFIERS TO BASIC PARTITION TYPES.
 - "LINE OF STRUCTURE" INDICATED FOR EACH PARTITION IS DIAGRAMMATIC ONLY AND DOES NOT INDICATE EXACT CONSTRUCTION CONDITIONS OR GEOMETRY.
 - TYPICAL FLOOR PLAN DIMENSIONS OF PARTITIONS ARE TO FACE OF STUD OR CMU UNLESS NOTED OTHERWISE.
 - WHERE A CLEAR OPENING DIMENSION IS INDICATED, THE DIMENSION IS MEASURED FACE-TO-FACE BETWEEN FINISHED SURFACES.
 - REFER TO SPECIFICATIONS FOR MINIMUM STUD DESIGN CRITERIA, MAXIMUM SPACING AND ALLOWABLE LIMITING HEIGHTS DEFLECTION CRITERIA FOR GYPSUM BOARD.
 - METAL STUD GAUGE (IF NOTED) AND UL TEST NUMBERS WILL VARY DEPENDING ON THE MANUFACTURER OF COMPONENTS ACTUALLY USED.
 - REFER TO FLOOR PLANS FOR FIRE RATING AND RATIONS.
 - ALL RATED PARTITIONS SHALL BE CEILING WITH LABELS PER AHJ AS REQUIRED. IBC CHIEF SHALL BE MINIMUM.
 - PENETRATIONS IN PARTITIONS AND CONNECTIONS OF THE PARTITIONS TO OTHER PARTITIONS OR STRUCTURE SHALL BE IN ACCORDANCE WITH MANUFACTURER'S RECOMMENDATIONS AND SHALL BE IN COMPLIANCE WITH APPLICABLE TESTING AGENCY REQUIREMENTS.
 - INSTALLATION OF GYPSUM BOARD, BACKER BOARD AND BASE BOARD TO CONFORM TO REQUIREMENTS FOR FIRE RATINGS AND ACOUSTICAL RATINGS.
 - PROVIDE WATER RESISTANT TYPE GYPSUM BOARD AT AREAS THAT ARE NOTED IN ROOM FINISH SCHEDULE TO RECEIVE CERAMIC OR PORCELAIN TILE FINISH.
 - INSTALL BLOCKING OR BACKER MATERIAL FOR ATTACHMENT / MOUNTING OF WALL ITEMS OR EQUIPMENT DESCRIBED IN THE DOCUMENTS. ALL BLOCKING TO BE FIRE RETARDANT TREATED.
 - PARTITIONS THAT ARE REQUIRED TO EXTEND TO THE DECK ABOVE ARE TO HAVE THE GYPSUM BOARD CUT TO FIT WITHIN A 1/4" MAXIMUM TOLERANCE TO THE SHAPE OF THE DECK ABOVE. GYPSUM BOARD SHALL BE CONTINUOUSLY SEALED FOR THE FULL DEPTH OF THE GYPSUM BOARD WITH FLEXIBLE SEALANT.
 - PROVIDE METAL STRAPPING @ 24" VERT. TO HOLD BATT INSULATION FOR AREAS WITHOUT GYPSUM WALLBOARD.
 - GYPSUM BOARD IS TO BE CUT SO THAT THE CLEARANCE BETWEEN METALLIC ELECTRICAL OUTLET BOXES AND THE GYPSUM BOARD DOES NOT EXCEED 1/8".
 - THE BOTTOM OF THE GYPSUM BOARD AT INTERIOR PARTITIONS IS TO BE 1/4" MINIMUM AND 1/2" MAXIMUM ABOVE THE FLOOR STRUCTURE AND IS TO BE SEALED FOR THE FULL DEPTH OF THE GYPSUM BOARD WITH FLEXIBLE SEALANT.
 - REFER TO INTERIOR FINISH SCHEDULE FOR WALL FINISHES.
 - REFER TO PARTITION TYPE MODIFIERS FOR STC RATED PARTITIONS.



PARTITION TYPES

| | |
|---|---------------------------------|
| M | CONCRETE MASONRY UNIT PARTITION |
| G | METAL STUD PARTITION |
| S | SHAFTWALL PARTITION |
| F | METAL FURRING PARTITION |
| W | WOOD STUD PARTITION |

PARTITION STRUCTURE WIDTH DESIGNATOR

| # | METAL STUD | WOOD STUD | CMU |
|----|------------|-----------|---------|
| 0 | *0-7/8" | - | - |
| 1 | 1-1/2" | - | - |
| 2 | 2-1/2" | 1-1/2" | - |
| 3 | 3-5/8" | 2-1/2" | - |
| 4 | 4" | 3-1/2" | 3-5/8" |
| 5 | 6" | 5-1/2" | 5-5/8" |
| 6 | 8" | 7-1/4" | 7-5/8" |
| 10 | 10" | 9-1/4" | - |
| 12 | 12" | 11-1/4" | 11-5/8" |

PARTITION HEAD CONDITION DESIGNATOR

| | |
|---|--|
| A | PARTITION TO BOTTOM OF STRUCTURAL ROOF OR FLOOR DECK ABOVE |
| B | PARTITION TO 6" ABOVE CEILING - BRACE WALL AS NEEDED |
| C | PARTITION TO BOTTOM OF CEILING ABOVE |
| D | PARTIAL HEIGHT PARTITION - SEE PLAN FOR HEIGHT |

PARTITION TYPE MODIFIER

| | |
|---|--|
| 1 | SOUND BATT MINIMUM STC RATING - 42 |
| 2 | RESILIENT CHANNEL AND SOUND BATT MINIMUM STC RATING - 50 |

| | |
|---|--|
| DESIGNED BY: DRAWN BY: CHECKED BY: SUBMITTED BY: ISSUED FOR CONSTRUCTION: | DATE: MARK: DESCRIPTION: DATE: DESCRIPTION: DATE: DESCRIPTION: |
|---|--|

DESIGNED BY: [Name]
 DRAWN BY: [Name]
 CHECKED BY: [Name]
 SUBMITTED BY: [Name]
 ISSUED FOR CONSTRUCTION: [Name]

POND & COMPANY
 3000 Parkway Lane, Suite 600
 Atlanta, Georgia 30338
 Phone (404) 533-7740
 Fax (404) 533-7740
 License No. 115655-1

PARTITION TYPES & DETAILS

SHEET ID
A-005