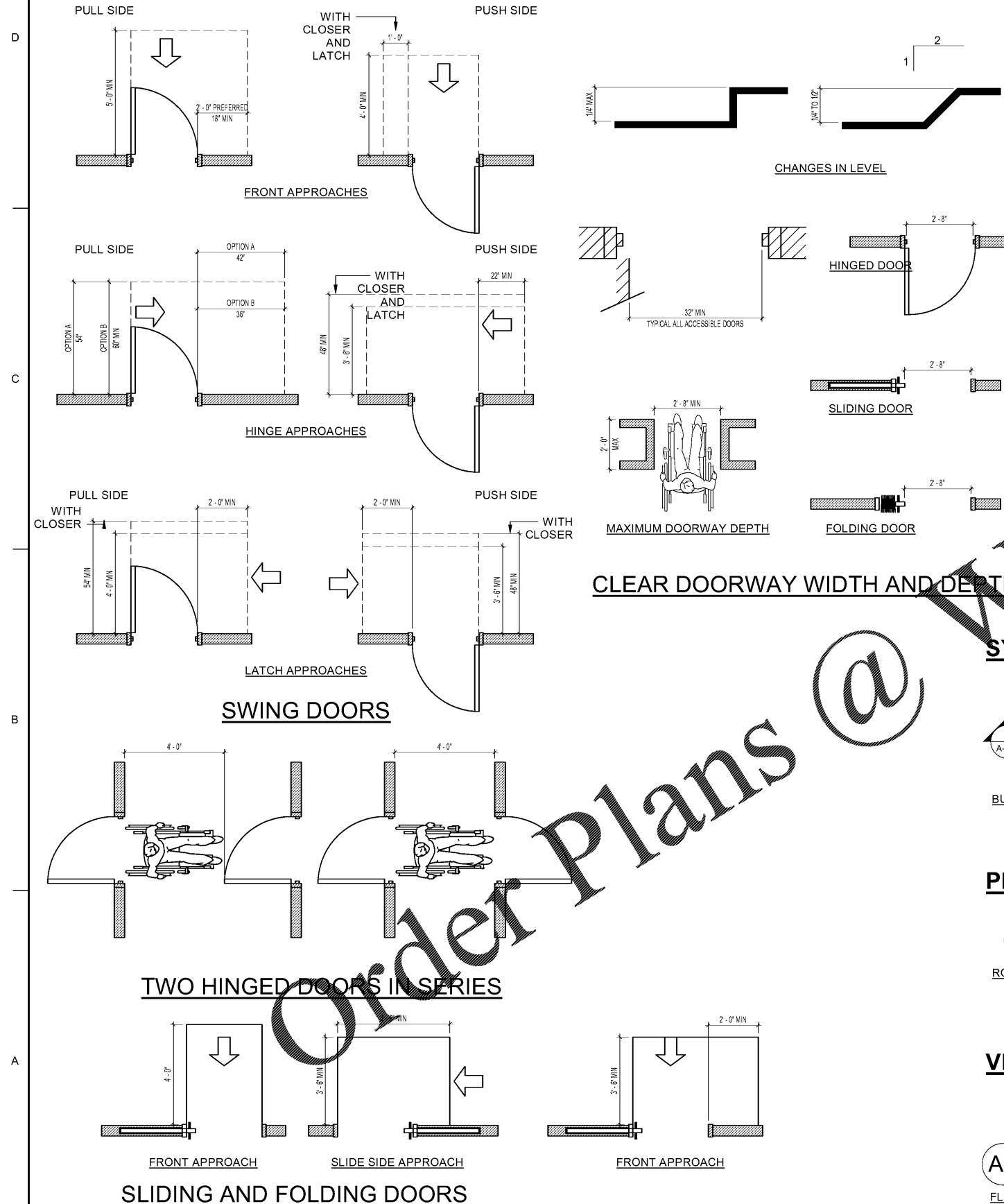


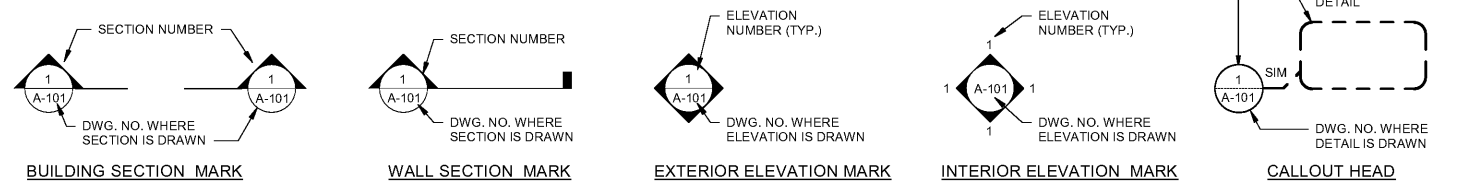
**MANEUVERING CLEARANCE AT DOORS CRITERIA**  
 (DIAGRAMS FOR REFERENCE ONLY, ANY DISCREPANCIES SHALL BE BROUGHT TO THE ATTENTION OF THE ARCHITECT)



**MATERIALS**

	COMPACTED EARTH
	ROCK
	ROCKFILL
	SAND / MORTAR
	CONCRETE
	CONCRETE BLOCK (CMU)
	CONCRETE BLOCK (SPLIT FACE CMU)
	EXTERIOR INSULATION FINISH SYSTEM
	BRICK
	METAL-LARGE SCALE
	METAL-SMALL SCALE
	WOOD-FRAMING (CONTINUOUS)
	WOOD-FRAMING (DISCONTINUOUS)
	WOOD-FINISH
	PLASTER/ROCK LATH
	ACOUSTICAL TILE
	INSULATION BATT
	INSULATION RIGID
	GYPSUM BOARD
	TERRAZZO
	CERAMIC TILE
	GLASS
	PLYWOOD
	PLASTER/ROCK LATH

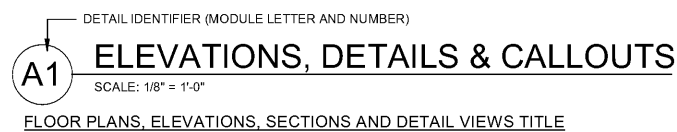
**SYMBOLS:**



**PLAN SYMBOLS:**



**VIEW TITLES:**



DESIGNED BY:	CHECKED BY:	DATE
DESCRIPTION	MARK	DATE

NORFOLK SOUTHERN CORP 1200 PEACHTREE STREET, NE ATLANTA, GEORGIA 30309 404-529-1230 3000 Peachtree Lane, Suite 200 Atlanta, Georgia 30328 Phone (478) 336-7740 Job No. 1185537	DESIGNED BY: E. Ames CHECKED BY: K. Webb-Teke SUBMITTED BY: E. Ames ISSUED FOR CONSTRUCTION: DC-MM-MYTY
---	--

CORPORATE ARCHITECT HANGAR FOR NORFOLK SOUTHERN CORPORATION  
 FULTON COUNTY AIRPORT - BROWN FIELD (FTY)  
 3827 AVIATION CIRCLE, SUITE 200  
 ATLANTA, GEORGIA 30338

**SYMBOLS AND MATERIALS**

SHEET ID  
**A-002**