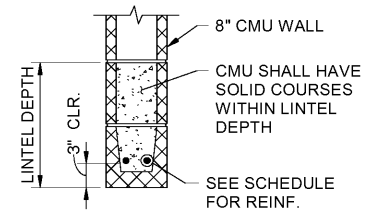


**NOTES FOR SCHEMATIC WALL DETAIL:**

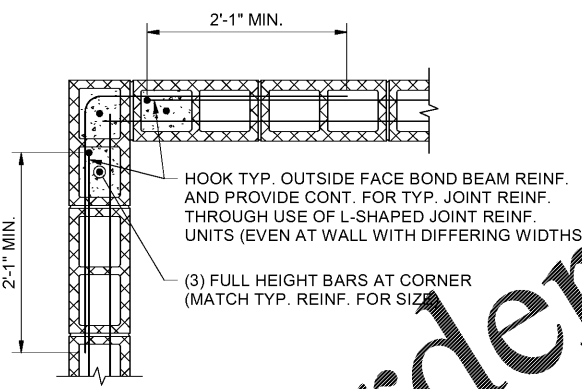
1. SEE GENERAL NOTE J.8 ON SHEET S-002 FOR TYPICAL JOINT REINFORCEMENT.
2. STOP ALL VERTICAL BARS 3" FROM TOP OF WALL.
3. AT OPENINGS LESS THAN 2'-0" x 2'-0", PROVIDE (2) #5 VERTICAL FULL HEIGHT BARS ON EACH SIDE OF OPENINGS AND (1) #5 x 6'-0" CENTERED ABOVE OPENINGS.
4. SEE ARCHITECTURAL DRAWINGS FOR OPENING LOCATIONS AND SIZES.
5. WHERE THE DISTANCE BETWEEN OPENINGS OR DISTANCE BETWEEN JOINT AND OPENING IS LESS THAN 4'-0"; PROVIDE (2) FULL LENGTH VERTICAL BARS IN EVERY CELL AND PROVIDE #3 WITH STANDARD 90 DEG HOOK. HORIZONTAL BARS @ 16" ON CENTER VERTICALLY (UNLESS NOTED OTHERWISE FOR LENGTH THAT IS LESS THAN 4'-0" LONG).
6. WHERE (2) BARS ARE REQUIRED IN A CELL, ONE BAR CENTER SHALL OCCUR 2 1/4" FROM THE EXTERIOR FACE OF THE CMU WALL & ONE BAR CENTER SHALL OCCUR 2 1/4" FROM THE INTERIOR FACE OF THE CMU WALL. ONE #1 DOWEL SHALL BE REQUIRED. SEE DETAIL A3/S-503



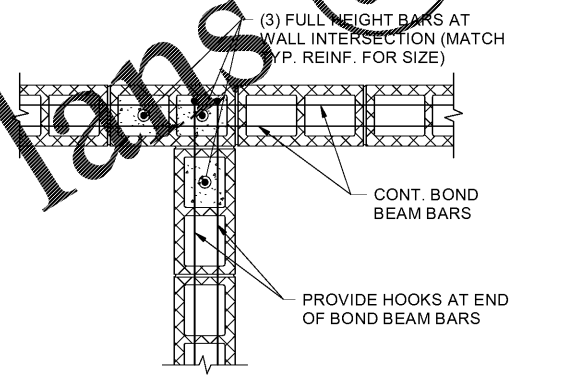
**CONCRETE MASONRY LINTEL SCHEDULE**

WALL OPENING	LINTEL DEPTH	REINFORCING
WIDTH < 4'-0"	8"	(2) #5 BARS
4'-0" ≤ WIDTH < 6'-0"	16"	(2) #5 BARS
6'-0" ≤ WIDTH < 12'-0"	24"	(2) #6 BARS

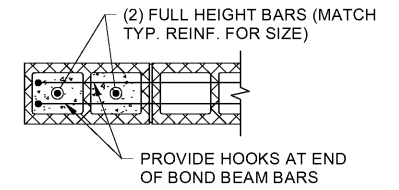
**C1 TYPICAL CMU WALL SCHEMATIC**  
SCALE: N.T.S.



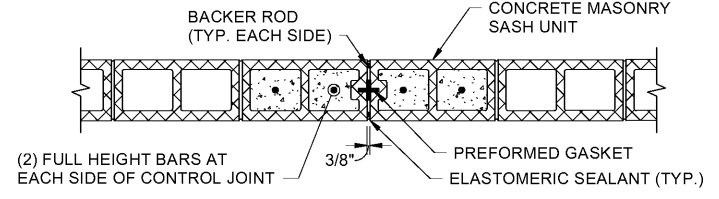
**A1 TYPICAL CMU CORNER REINFORCEMENT**  
SCALE: N.T.S.



**A2 TYPICAL CMU INTERSECTION REINFORCEMENT**  
SCALE: N.T.S.



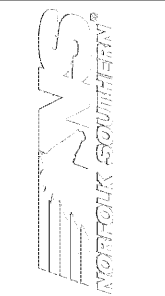
**A3 TYPICAL CMU END REINFORCEMENT**  
SCALE: N.T.S.



**A4 TYPICAL CMU WALL CONTROL JOINT**  
SCALE: N.T.S.

WWW.LDILine.com

7/13/2020 10:57:54 AM BIM 360//1190557 - Pegasus/1190557\_Pegasus\_NS\_Struct\_V19.rvt



MARK	DESCRIPTION	DATE

DESIGNED BY: DRAWN BY: CHECKED BY: SUBMITTED BY: ISSUED FOR CONSTRUCTION:	DATE: DATE: DATE: DATE: DATE:
---	---

**POND**  
NORFOLK SOUTHERN CORP  
1200 PEACHTREE STREET, NE  
ATLANTA, GEORGIA 30309  
3000 Peachtree Lane, Atlanta, GA 30305  
Phone (478) 336-7740  
Fax (478) 1190557

CORPORATE ARCHITECT HANGAR FOR NORFOLK SOUTHERN CORPORATION  
FULTON COUNTY AIRPORT - BROWN FIELD (FTY)  
3822 AVIATION CIRCLE, SUITE 200  
ATLANTA, GEORGIA 30336

SHEET ID  
**S-503**