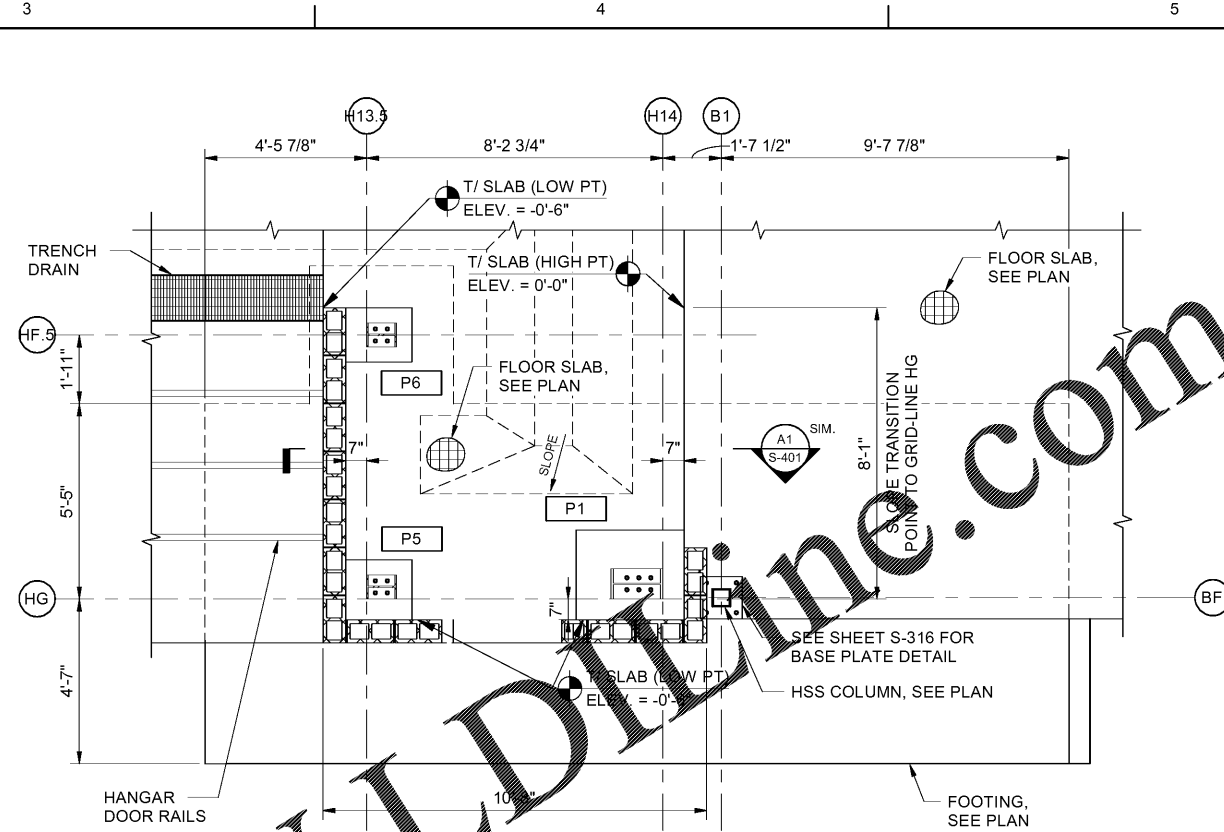
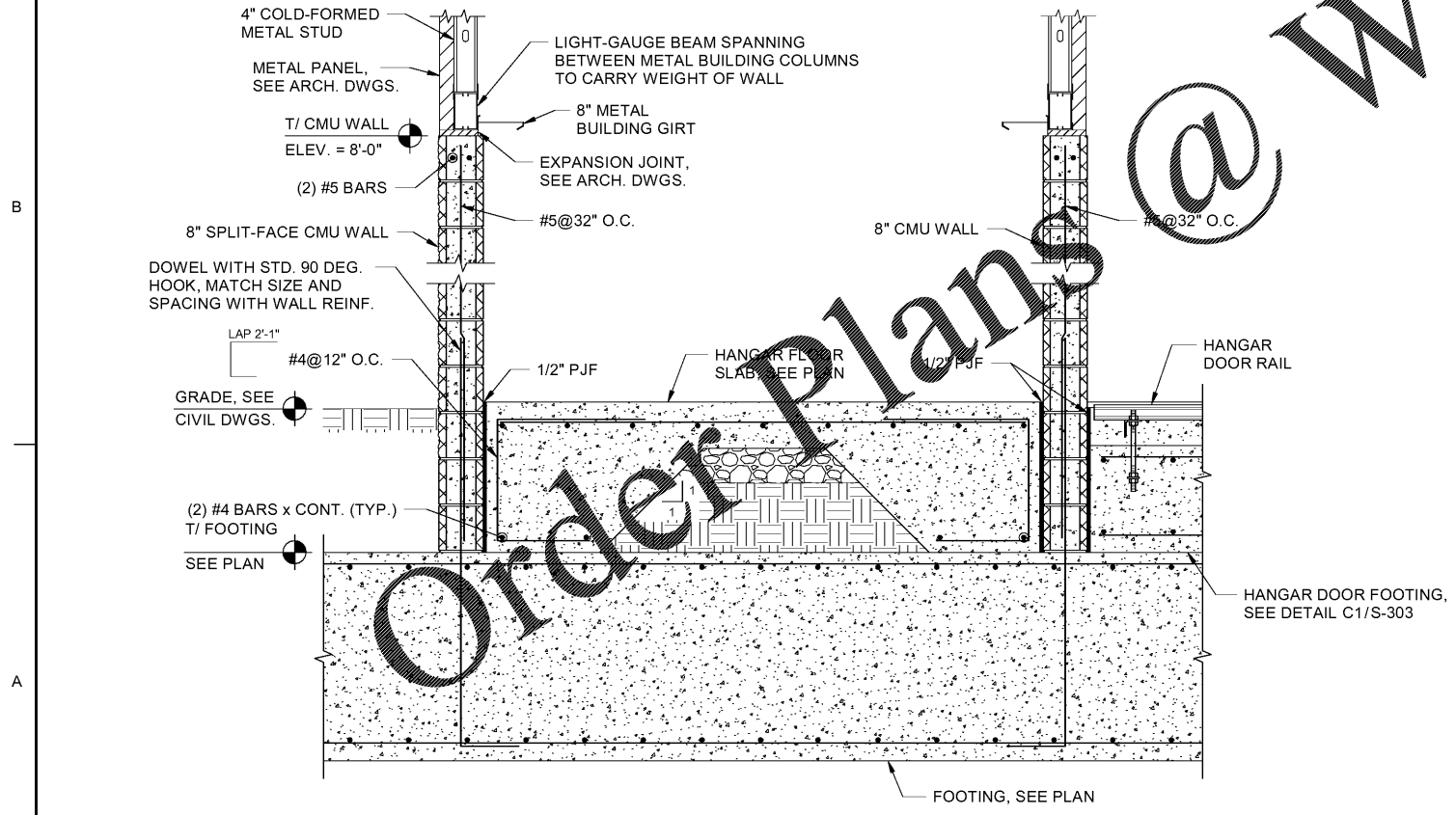


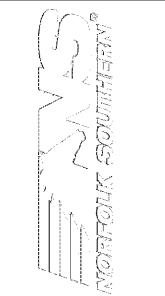
**C1** ENLARGED FOUNDATION PLAN  
SCALE: N.T.S.



**C3** ENLARGED FOUNDATION PLAN  
SCALE: N.T.S.



**A1** SECTION AT FRONT OF HANGAR  
SCALE: N.T.S.



MARK	DESCRIPTION	DATE

DESIGNED BY: MBA	DRAWN BY: MBA	CHECKED BY: BN	SUBMITTED BY: ERA	ISSUED FOR CONSTRUCTION: 13-07-2020
<small>         NORFOLK SOUTHERN CORPORATION          1200 PEACHTREE STREET, NE          ATLANTA, GEORGIA 30309  <b>POND</b>          3000 Peachtree Lane, Suite 200          Atlanta, Georgia 30328          Phone (404) 335-7740          Job No. 1185537       </small>				

CORPORATE ARCHITECT HANGAR FOR NORFOLK SOUTHERN CORPORATION  
 FULTON COUNTY AIRPORT - BROWN FIELD (FTY)  
 382 AVIATION CIRCLE, SUITE 200  
 ATLANTA, GEORGIA 30338

**ENLARGED FOUNDATION PLANS**

SHEET ID  
**S-401**

7/13/2020 10:57:50 AM BIM 360/1180557 - Pegasus/1180557\_Pegasus\_NS\_Struct\_Y19.rvt