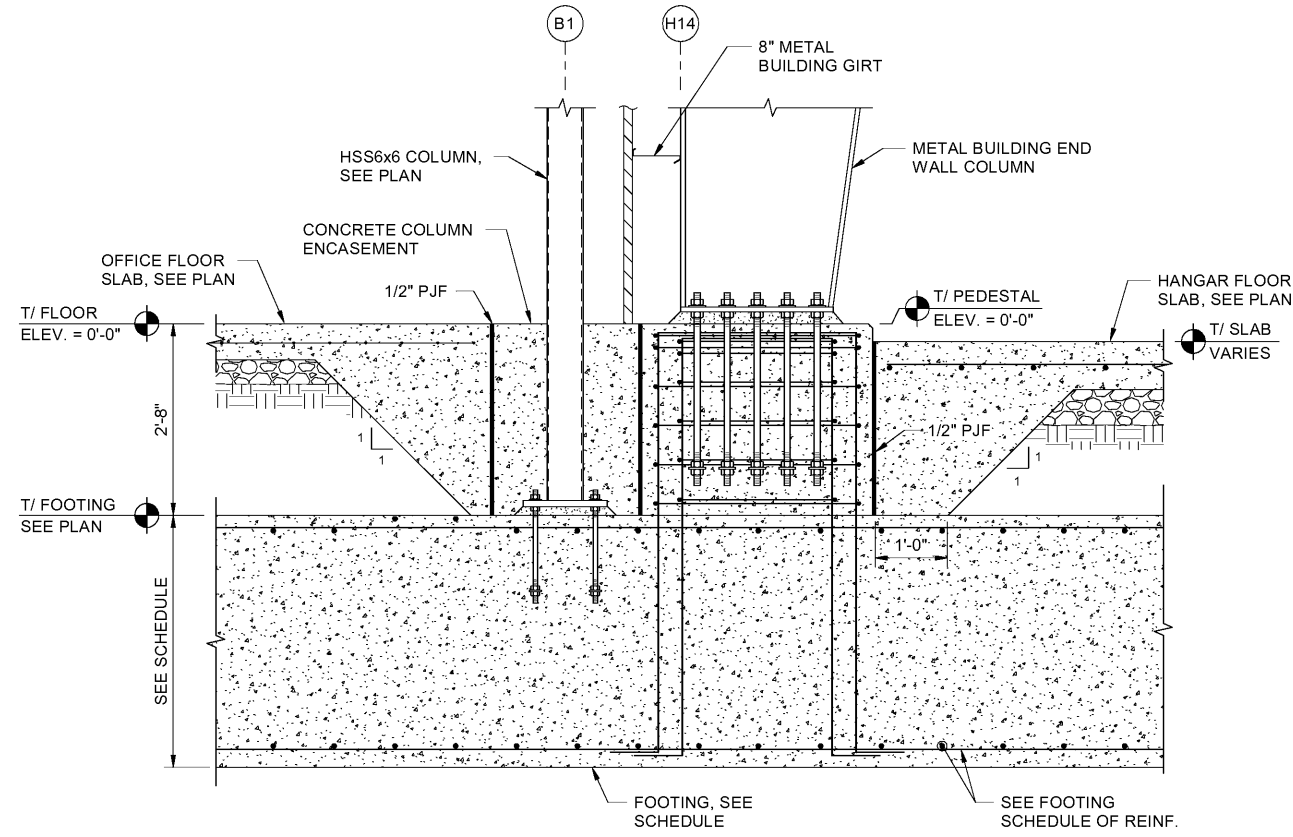
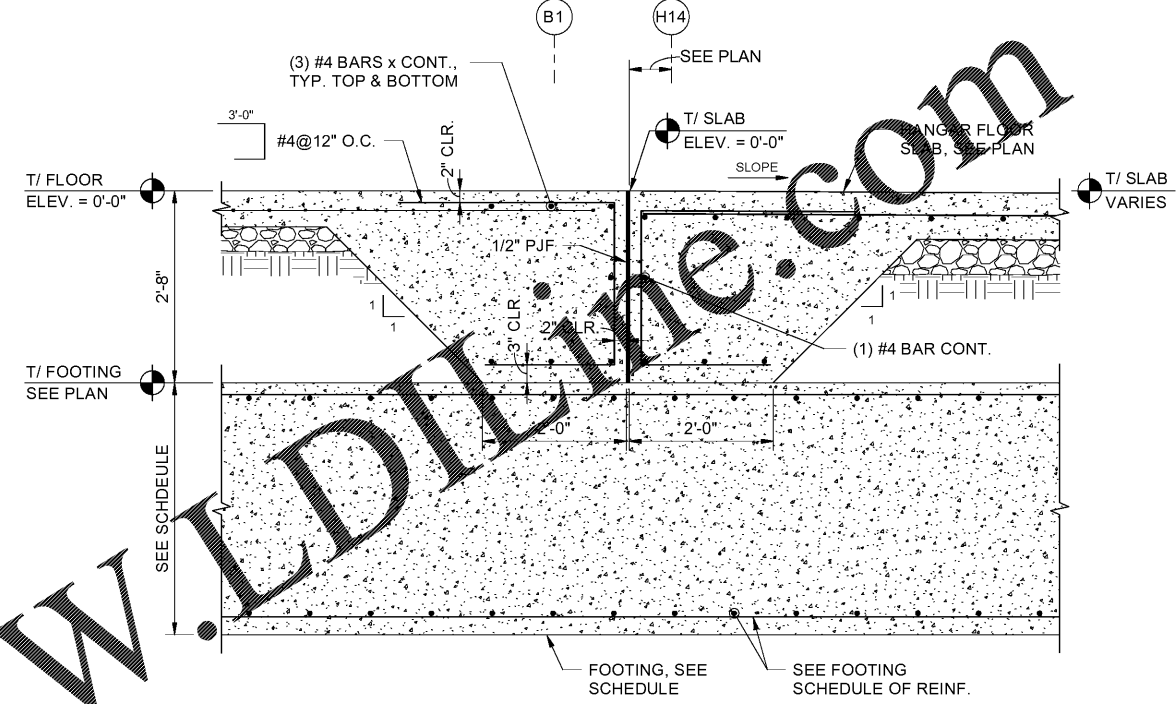


1 2 3 4 5

D  
C  
B  
A

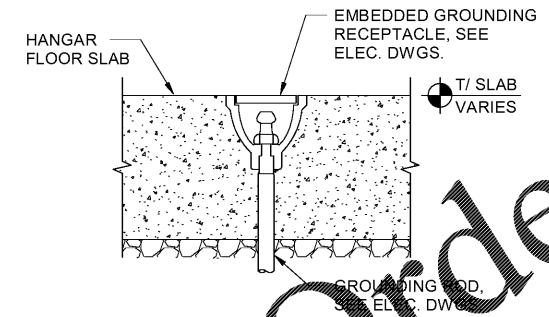


**C1** TYPICAL HANGAR INTERIOR WALL AT COLUMNS  
SCALE: N.T.S.

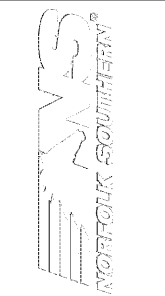


**C3** TYPICAL HANGAR INTERIOR WALL  
SCALE: N.T.S.

NOTE: INSTALL GROUNDING RECEPTACLE IN ACCORDANCE WITH MANUFACTURER'S REQUIREMENTS



**A1** AIRCRAFT GROUNDING RECEPTACLE  
SCALE: N.T.S.



MARK	DESCRIPTION	DATE

DESIGNED BY: BIM	DRAWN BY: MARK	CHECKED BY: BN	SUBMITTED FOR CONSTRUCTION: ERA	ISSUED FOR CONSTRUCTION: 13-07-2020
<small>OWNER'S REPRESENTATIVE: NORFOLK SOUTHERN 1200 PEACHTREE STREET, NE ATLANTA, GEORGIA 30309 NAME OF CONTRACTOR: POND &amp; COMPANY, INC. 3002 PARKWAY LANE, SUITE 200 ATLANTA, GEORGIA 30328 PHONE (478) 335-7740 JOB NO. 1185537</small>				

CORPORATE AIRCRAFT HANGAR FOR NORFOLK SOUTHERN CORPORATION  
FULTON COUNTY AIRPORT - BROWN FIELD (FTY)  
362 AVIATION CIRCLE, SUITE 200  
ATLANTA, GEORGIA 30336

**DETAILS**

SHEET ID  
**S-302**

7/13/2020 10:57:28 AM BIM 360//1180557 - Pegasus/1180557\_Pegasus\_NS\_Struct\_V19.rvt