

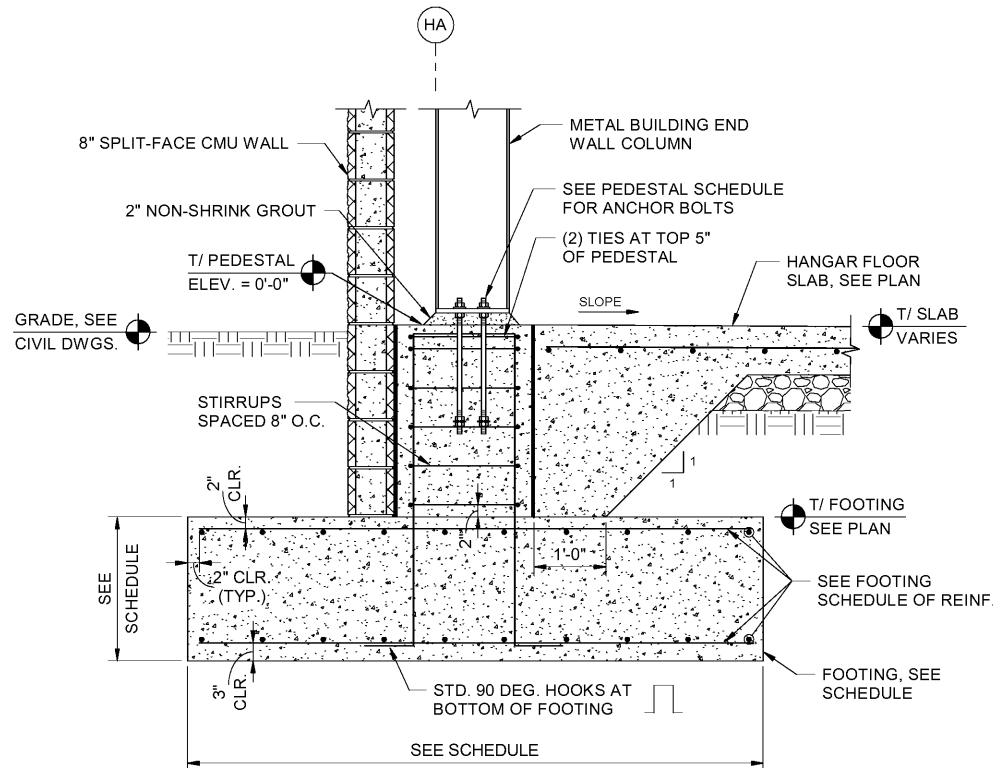
1

2

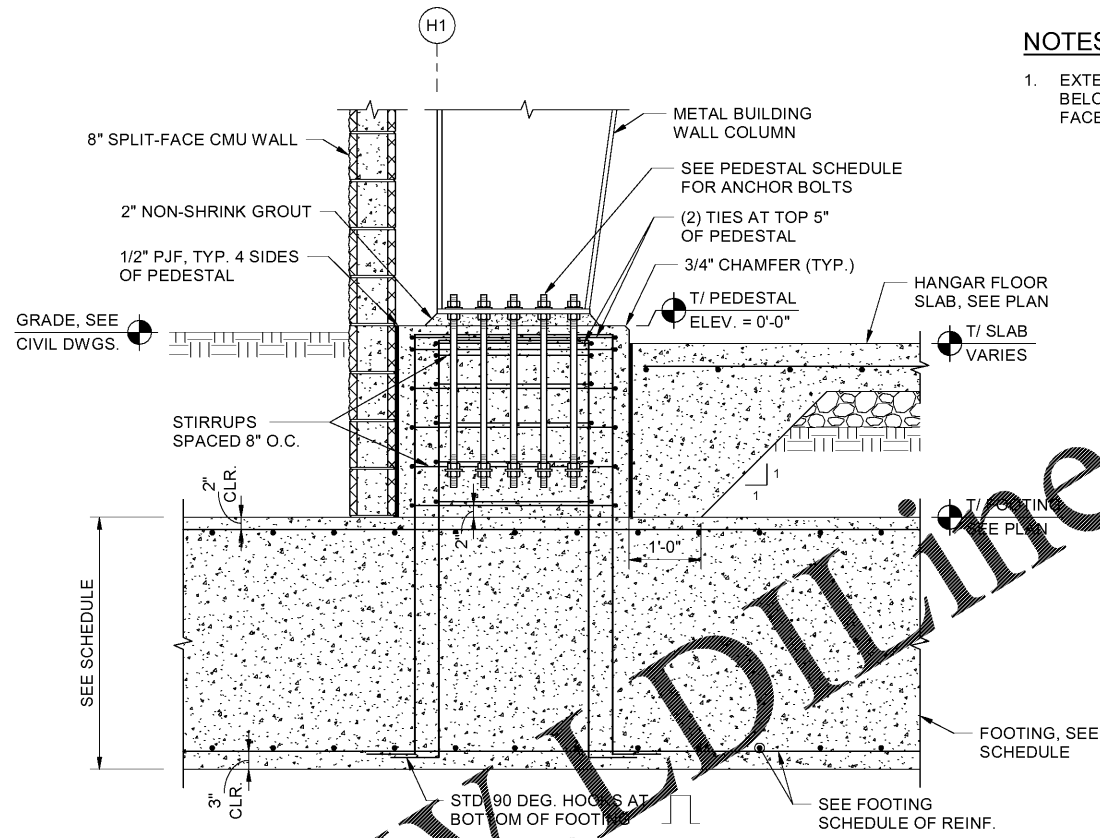
3

4

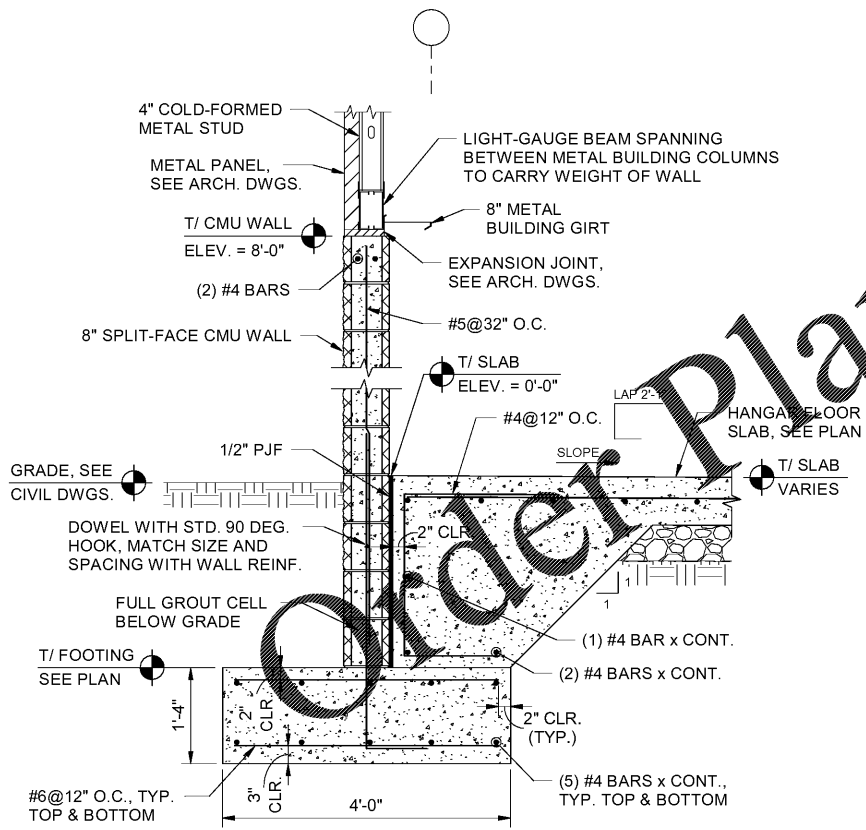
5



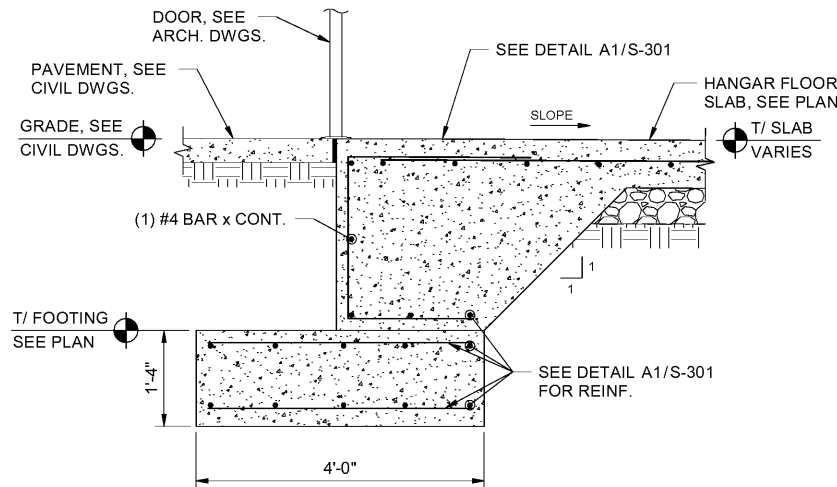
C1 HANGAR END WALL COLUMN SECTION
SCALE: N.T.S.



C3 PRIMARY HANGAR COLUMN SECTION
SCALE: N.T.S.



A1 TYPICAL HANGAR EXTERIOR WALL
SCALE: N.T.S.



A3 TYPICAL HANGAR WALL AT DOORWAY
SCALE: N.T.S.

NOTES:

1. EXTEND SPLIT FACE CMU A MINIMUM OF TWO COURSES BELOW GRADE. AT CONTRACTOR'S OPTION, PROVIDE SMOOTH FACED CMU BETWEEN FOUNDATION AND SPLIT FACE CMU.



MARK	DESCRIPTION	DATE

DESIGNED BY: DRA	DRAWN BY: MCH	CHECKED BY: BN	SUBMITTED BY: ERA	ISSUED FOR CONSTRUCTION: 13-07-2020
NORFOLK SOUTHERN CORP 1200 PEACHTREE STREET, NE ATLANTA, GEORGIA 30309 POND 3002 Peachtree Lane, Suite 200 Atlanta, Georgia 30328 Phone (404) 335-7740 Fax (404) 335-7740 Job No. 1185547				

CORPORATE ARCHITECT HANGAR FOR NORFOLK SOUTHERN CORPORATION
 FULTON COUNTY AIRPORT - BROWN FIELD (FTY)
 3522 AVIATION CIRCLE, SUITE 200
 ATLANTA, GEORGIA 30336

DETAILS

SHEET ID
S-301

7/13/2020 10:57:26 AM BIM 360//1180557 - Pegasus/1180557_Pegasus_NS_Struct_V19.rvt