

NOTES:

- SEE SHEET S-001, S-002, AND S-003 FOR GENERAL NOTES AND ABBREVIATION KEY.
- ROOF DECK: 1 1/2" DEEP, WIDE RIB, 20 GAUGE, GALVANIZED
- ROOF JOISTS SHALL BE EQUALLY SPACED BETWEEN COLUMN-LINES IN NOT SPECIFICALLY INDICATED.
- ALL OPEN WEB JOIST SHALL HAVE 5" DEEP SEATS.
- JOIST TOP CHORD EXTENSIONS SHALL BE TYPE "R2" WITH A MINIMUM SECTION MODULUS (S_x) OF 0.997 IN³ AND MOMENT OF INERTIA (I_x) OF 1.157 IN⁴.

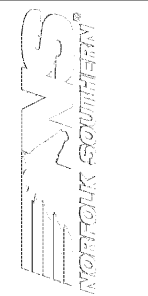
LEGEND:

- SPAN DIRECTION
- W8 W8x15
- HSS HSS2-1/2x2-1/2x1/4
- HSS3x3 HSS3x3x1/4
- L3x3 L3x3x1/4

CONNECTION DESIGN LOADS:

- INDICATED CONNECTION LOADS APPLY TO ALL MEMBERS OF THAT SIZE ON THIS SHEET.
- SEE ELEVATIONS FOR ADDITIONAL DESIGN LOADS. ALL LOADS INDICATED IN THE PLAN AND ELEVATION DRAWINGS SHALL BE APPLIED CONCURRENTLY TO THE CONNECTIONS.
- SEE NOTE G ON SHEET S-002 FOR MORE INFORMATION ON DELEGATED CONNECTION DESIGN.
- CONNECTION DESIGN LOADS:

BEAM SIZE	VERT. SHEAR
W8x15	6 K
W12x19	15 K
W14x22	20 K
W14x26	20 K
W14x30	20 K
W16x31	20 K
W18x35	25 K
W24x68	45 K



MARK	DESCRIPTION	DATE

DESIGNED BY: POND & COMPANY	DRAWN BY: MARK	CHECKED BY: BN	SUBMITTED BY: ERA	ISSUED FOR CONSTRUCTION: 15-07-2020
--------------------------------	-------------------	-------------------	----------------------	--

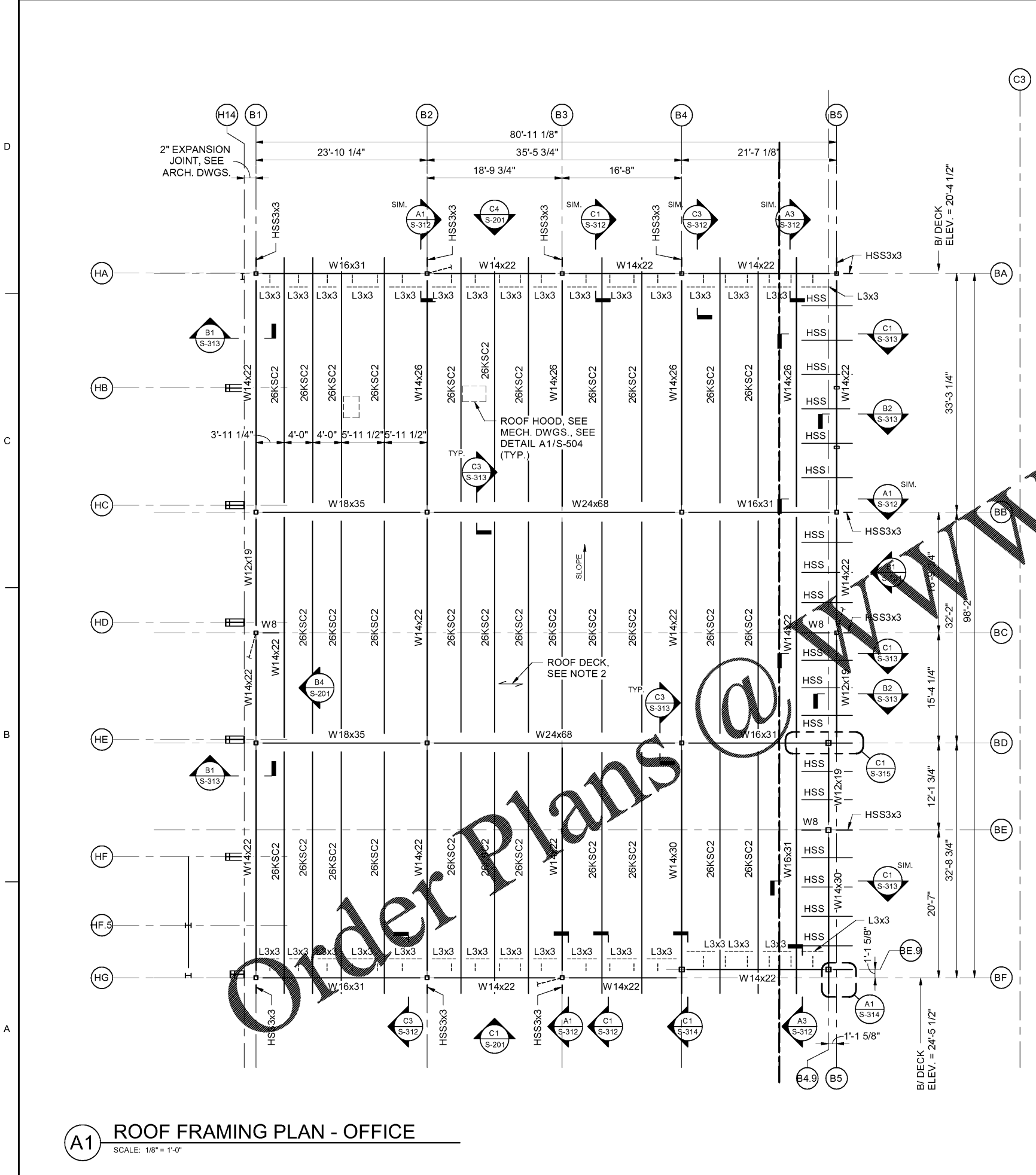
NORFOLK SOUTHERN CORP
1200 PEACHTREE STREET, NE
ATLANTA, GEORGIA 30309

FOND
3000 Peachtree Lane, Suite 3000
Atlanta, Georgia 30328
Phone (770) 335-7740
Fax (770) 335-7749
JOB NO. 1185537

CORPORATE ARCHITECT HANGAR FOR NORFOLK SOUTHERN CORPORATION
FULTON COUNTY AIRPORT - BROWN FIELD (FTY)
3825 AVIATION CIRCLE, SUITE 200
ATLANTA, GEORGIA 30338

ROOF FRAMING PLAN - OFFICE

SHEET ID
S-151B



A1 ROOF FRAMING PLAN - OFFICE
SCALE: 1/8" = 1'-0"

