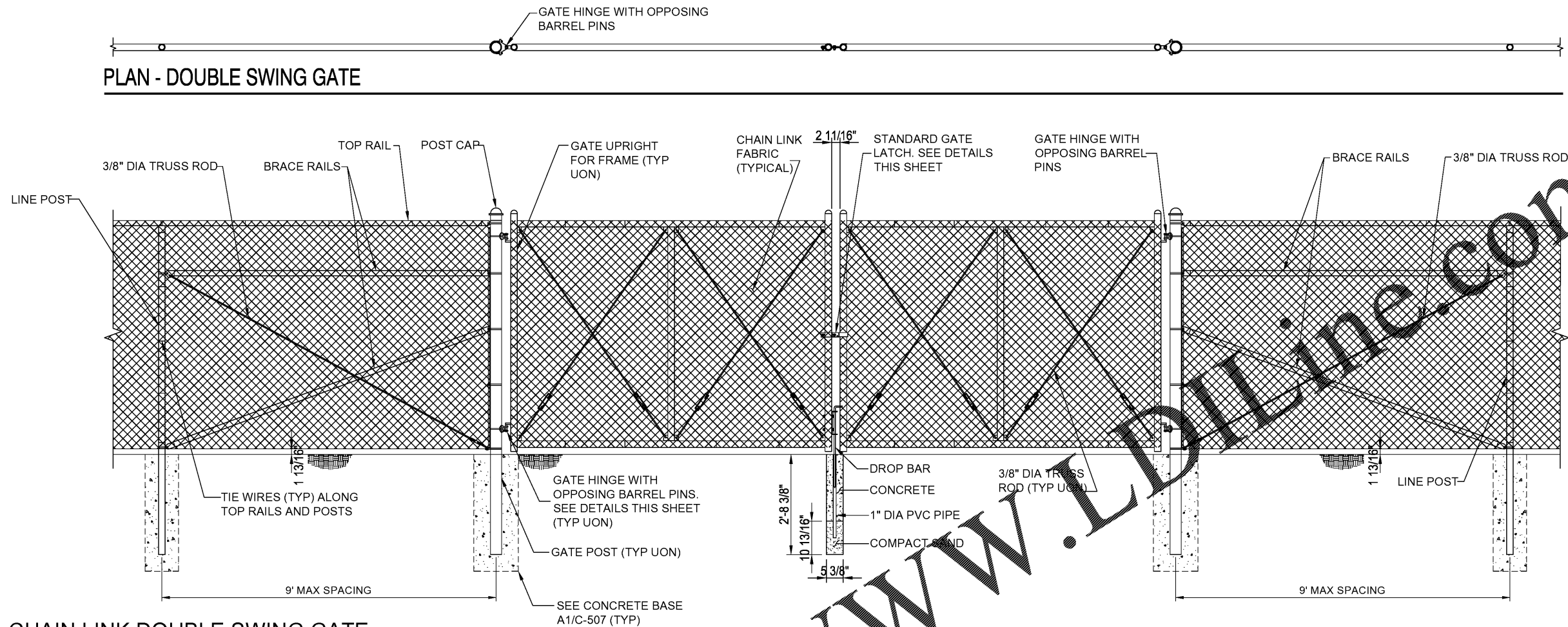


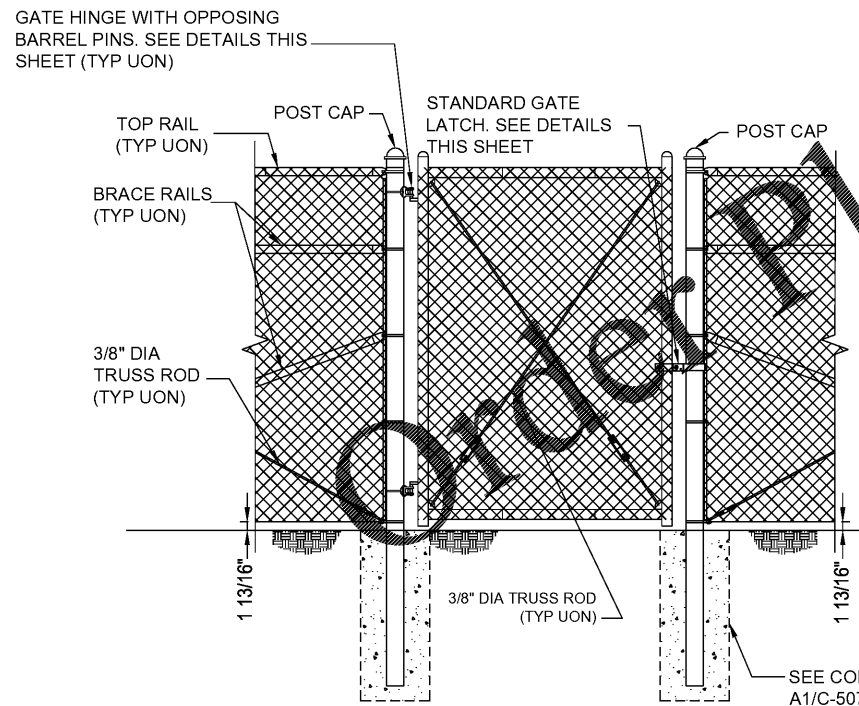
1 2 3 4 5

**PLAN - DOUBLE SWING GATE**

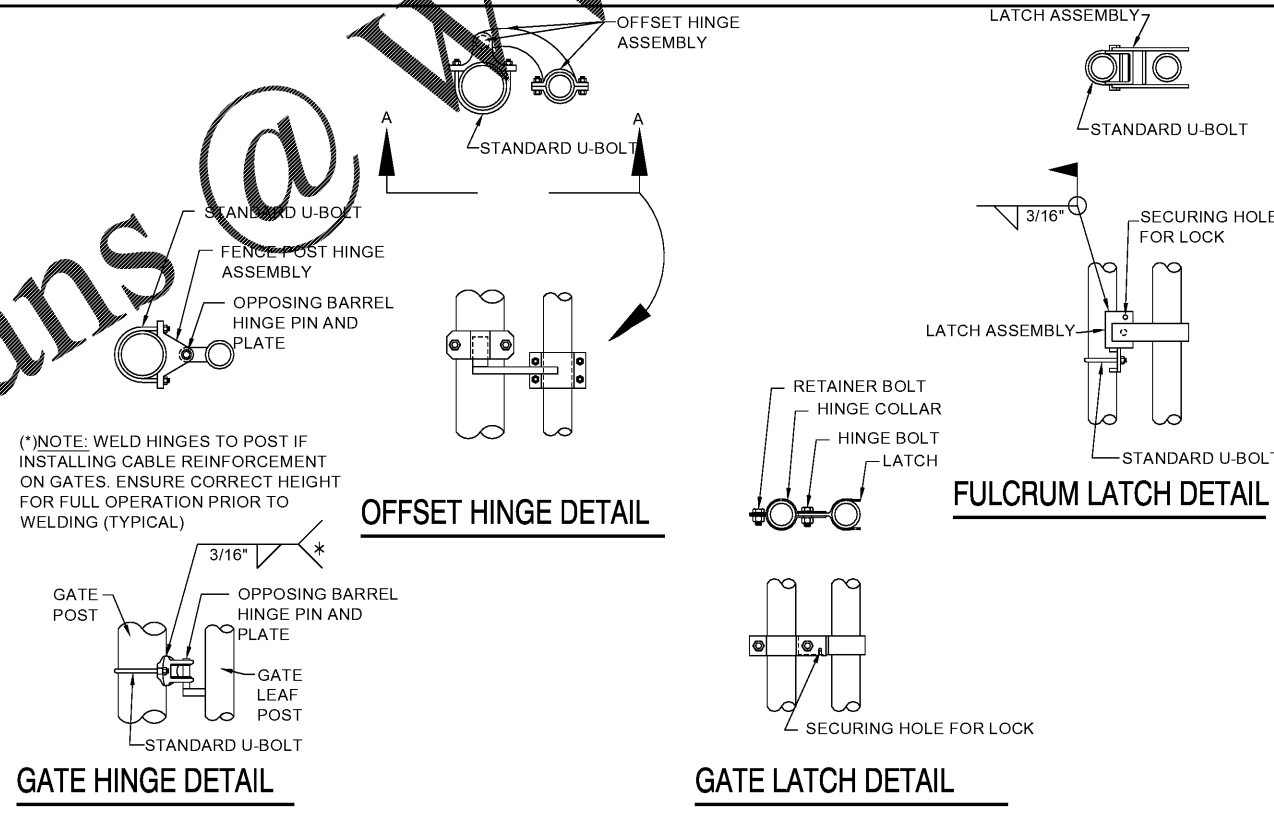


**B1 CHAIN LINK DOUBLE SWING GATE**  
NO SCALE

**PLAN SINGLE SWING GATE**



**A1 CHAIN LINK PERSONNEL GATE**  
NO SCALE



(\*NOTE: WELD HINGES TO POST IF INSTALLING CABLE REINFORCEMENT ON GATES. ENSURE CORRECT HEIGHT FOR FULL OPERATION PRIOR TO WELDING (TYPICAL))

SINGLE LEAF GATES		
OPENING	GATE POSTS	HINGE SPACE (S)
FACE TO FACE	SQUARE & ROUND SIZES	POST TO UPRIGHT
3'-0" THROUGH 6'-0"	2.5" SQ x 3/16" TH OR 2.875" OD	FOR SQUARE & ROUND GATE POSTS 2 1/4"
6'-0" [1829MM] THROUGH 12'-0"	4" SQ x 3/16" TH OR 4" OD	FOR SQUARE & ROUND GATE POSTS 2 1/4"
12'-0" THROUGH 19'-0"	6" SQ x 3/16" TH OR 6.625" OD	FOR SQUARE & ROUND GATE POSTS 2 1/4"
19'-0" THROUGH 23'-0"	8" SQ x 1/4" TH OR 8.625" OD	FOR SQUARE & ROUND GATE POSTS 2 1/4"

**GATE POSTS & FOUNDATIONS:** GATE POST SIZE AND ASSOCIATED FOOTING DIAMETER TO BE DETERMINED BY MANUFACTURER, BASED ON LEAF WEIGHT & DIMENSION, BUT NOT LESS THAN DIAMETER SHOWN ON THESE DRAWINGS. MINIMUM FOOTING DIAMETERS (TO BE FILLED W/4000 PSI CONC): 40" Ø FOR 8" POST; 36" Ø FOR 6" POST; 24" Ø FOR 4" POST; OTHER SIZES TO BE DESIGNED BY MFR OR KTR. NO FOOTING WIDTH SHALL BE LESS THAN 4(X) THE POST WIDTH.

**NOTE:** IF GATE HINGES ARE NOT OPPOSING (AS SHOWN ABOVE) OR LEAF IS NOT LOCKED MECHANICALLY TO THE HINGES, WELD AN ANGLE, PLATE, OR BLOCK ABOVE HINGE TO RESTRICT LEAF FROM BEING REMOVED OR LIFTED OFF. RESTRICTION SHALL NOT HINDER OPERATION OF GATE.



MARK	DESCRIPTION	DATE

DESIGNED BY: AS	CHECKED BY: AS	ISSUED FOR CONSTRUCTION: EA
DRAWN BY: AS	DATE: 11/15/2014	

**POND**  
2000 Parkway Lane, Suite 600  
Fulton County Airport - Brown Field (F71)  
Atlanta, Georgia 30358  
Phone: (770) 238-2740  
Fax: (770) 238-2741  
E-Mail: info@pond.com

**CIVIL DETAILS**

SHEET ID  
**C-509**

7/13/2020 7:18:39 AM X:\FY19\19055704\CAD\BIM\04\_02\CAD\C-509