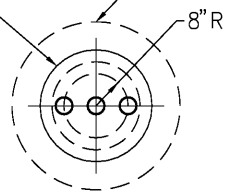


SHELL CODES: 2-E8D0928, 1-08D1028

22" FLGD. MANWAY  
w/3-4" C.S. NPT FTGS.  
& COVER

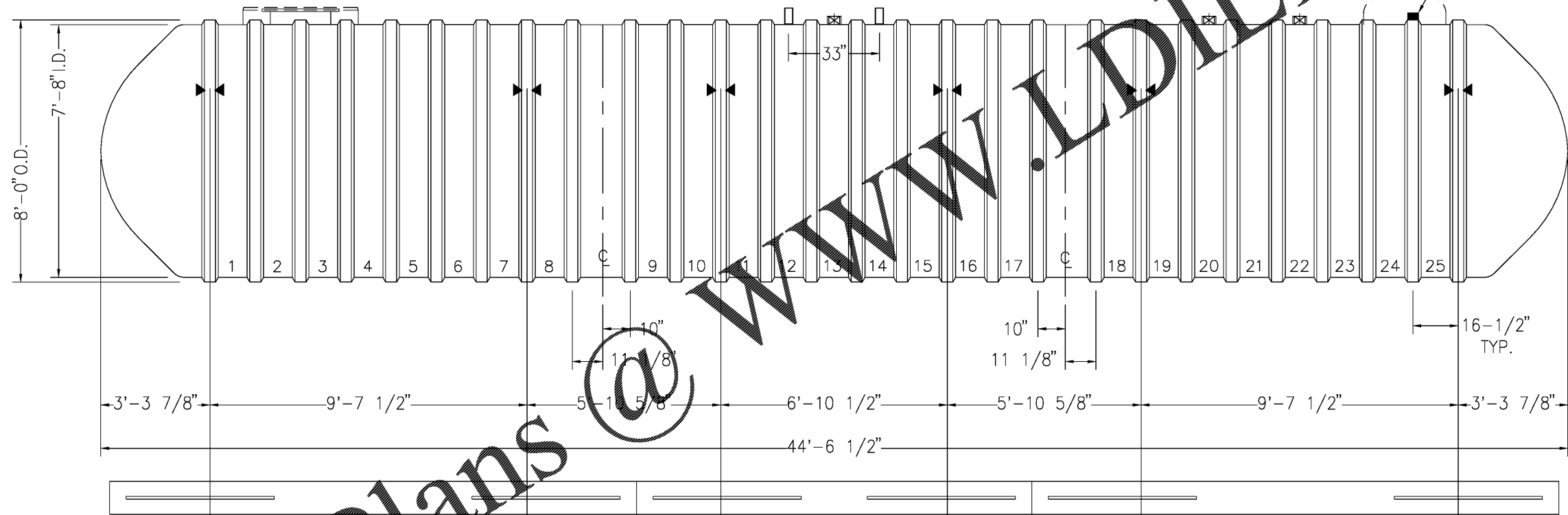
OPTIONAL 42" CONTAINMENT COLLAR



4" FRP NPT FTGS. (3 TYP.)

OPTIONAL R-30 RESERVION

4" ANNULAR SPACE FTG.



OPTIONAL 12" x 12" - 16' DEADMAN

OPTIONAL 12" x 12" - 12' DEADMAN

OPTIONAL 12" x 12" - 16' DEADMAN

NOTES:

- ☒ HOLD DOWN STRAP CLIP
- ▶◀ HOLD DOWN STRAP LOCATION
- TYPE "3" LIFT LUG - SD
- TYPE "3" LIFT LUG - HD

NOTE:

1. DEADMANS ARE REQUIRED IN PRESENCE OF GROUNDWATER.
2. BORING LOGS ON BL701 DID NOT INDICATE PRESENCE OF GROUNDWATER.

DWT-6 TYPE II (8')-15000		DATE: 10/01/18
		DRAWN BY: R.OXNER
CAPACITY: 14,545		REVISED:
WEIGHT: DRY/WET 7500/9350		DWG NUMBER: 8-15DW6F

NOTE: BASIS OF DESIGN IS CONTAINMENT SOLUTIONS DOUBLE WALLED FIBERGLASS AFFF CONTAINMENT TANK, 15,000 GALLONS OR APPROVED EQUAL

**A1** UNDERGROUND CONTAINMENT TANK  
NO SCALE



MARK	DESCRIPTION	DATE

DESIGNED BY: AS	CHECKED BY: AS	ISSUED FOR CONSTRUCTION: EA
DRAWN BY: AS	SUBMITTED BY: EA	DATE: 10/01/18
<small>OWNER'S REPRESENTATIVE GENERAL CONTRACTOR GENERAL CONTRACTOR TYPE IIA - NON-COMBUSTIBLE TYPE IIB - NON-COMBUSTIBLE TYPE IIC - NON-COMBUSTIBLE TYPE IID - NON-COMBUSTIBLE TYPE IIE - NON-COMBUSTIBLE TYPE IIF - NON-COMBUSTIBLE TYPE IIG - NON-COMBUSTIBLE TYPE IIH - NON-COMBUSTIBLE TYPE IIJ - NON-COMBUSTIBLE TYPE IIK - NON-COMBUSTIBLE TYPE IIL - NON-COMBUSTIBLE TYPE IIM - NON-COMBUSTIBLE TYPE IIN - NON-COMBUSTIBLE TYPE IIO - NON-COMBUSTIBLE TYPE IIP - NON-COMBUSTIBLE TYPE IIQ - NON-COMBUSTIBLE TYPE IIR - NON-COMBUSTIBLE TYPE IIS - NON-COMBUSTIBLE TYPE IIT - NON-COMBUSTIBLE TYPE IIU - NON-COMBUSTIBLE TYPE IIV - NON-COMBUSTIBLE TYPE IIW - NON-COMBUSTIBLE TYPE IIX - NON-COMBUSTIBLE TYPE IIY - NON-COMBUSTIBLE TYPE IIZ - NON-COMBUSTIBLE</small>		

**POND**  
2000 Parkway Lane, Suite 600  
Atlanta, Georgia 30308  
Phone: (404) 238-7240  
Fax: (404) 238-7241  
E-MAIL: INFO@POND.COM

CIVIL DETAILS

SHEET ID  
**C-508**

7/13/2020 7:18:34 AM X:\FY19\190557\04\_CAD BIM\04\_02\_CAD\C-501