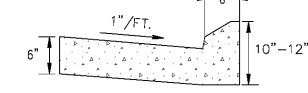
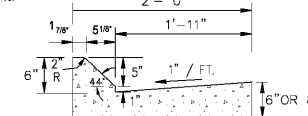


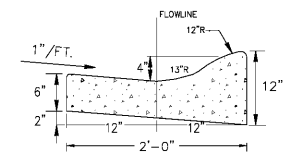
TYPE 1 CONCRETE CURB & GUTTER
INDUSTRIAL ROAD
N.T.S.



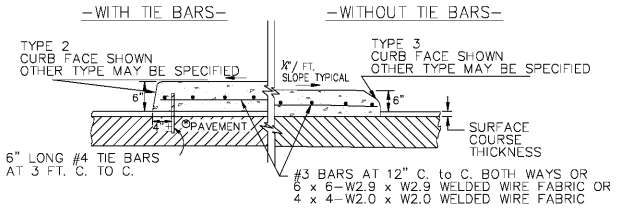
TYPE 2 CONCRETE CURB & GUTTER
MAJOR & MINOR RESIDENTIAL S.D. STREETS ONLY
N.T.S.



TYPE 3 MOUNTABLE CURB & GUTTER
N.T.S.



TYPE 4 CONCRETE ROLLED CURB & GUTTER
N.T.S.

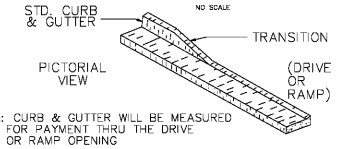


CONCRETE MEDIANS (ISLAND)
N.T.S.

NOTE: IF CONCRETE MEDIAN INTERCEPTS PEDESTRIAN CROSSWALKS, WHEELCHAIR RAMPS (DWG 312) WILL BE REQUIRED.

- P.C. PAVEMENT**
THE BARS WILL BE PLACED AFTER FINISHING & BEFORE INITIAL SET HAS TAKE PLACE.
- ASPHALT PAVEMENT**
THE BARS MAY BE DRIVEN IN OR DRILLED & GROUTED.

DETAILS OF RECESSED CURB
TYPICAL USE: AT DRIVEWAYS OR CURB CUT RAMPS
N.T.S.



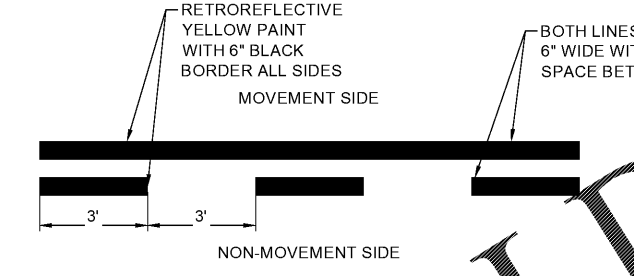
NOTE: CURB & GUTTER WILL BE MEASURED FOR PAYMENT THRU THE DRIVE OR RAMP OPENING.

SECTIONAL VIEW

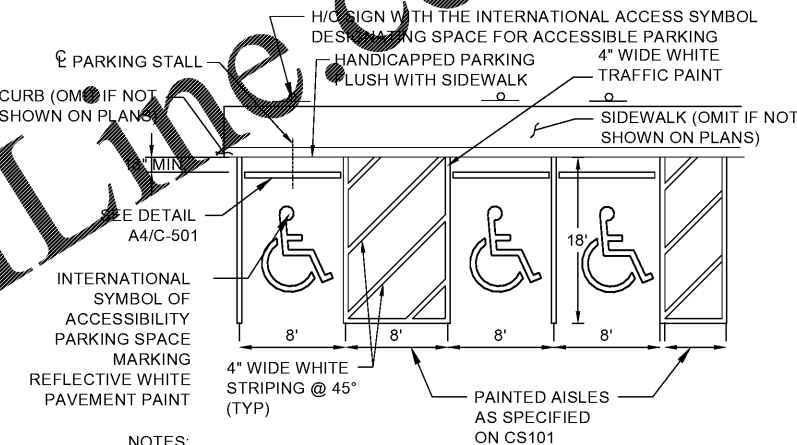
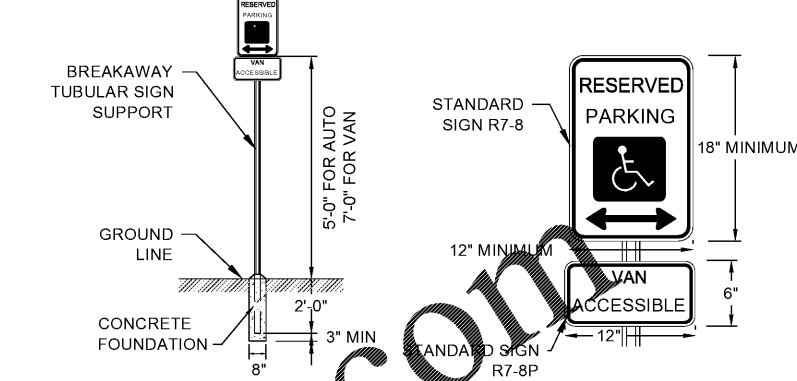
FULTON COUNTY STANDARD DETAIL 307 CURB & GUTTER DETAILS	DATE	REVISIONS	DATE	REVISIONS	DWG./CHK./APP. BY	FULTON COUNTY PUBLIC WORKS 141 PRYOR ST. ATLANTA, GA. 30303 404-612-7400 FAX: 404-730-6325	DRAWING NO. 307
	8-08	JJM			LJM		
					DATE: 4-19-05		

C1 CONCRETE CURB AND GUTTER
NO SCALE

D3 CROSSWALK PAVEMENT MARKING
NO SCALE

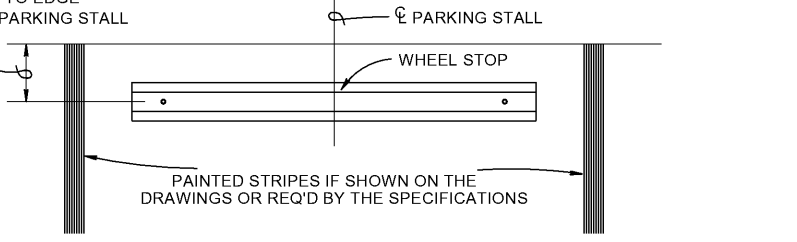
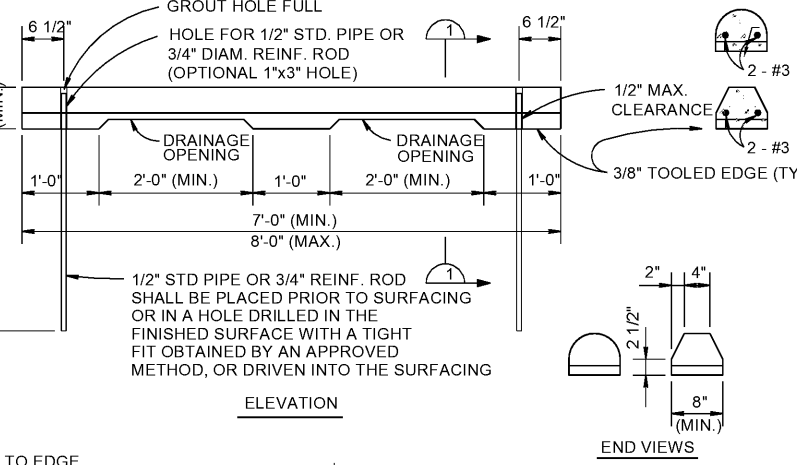


C3 NON-MOVEMENT AREA MARKING
NO SCALE



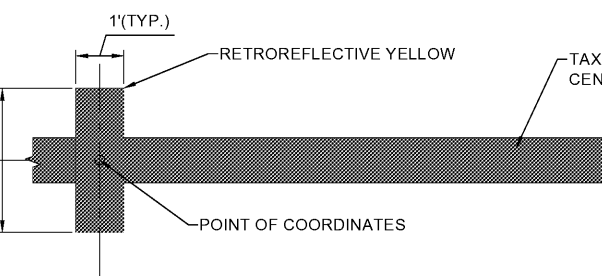
- NOTES:**
- ALL SIGNS SHALL BE 0.080" THICK ALUMINUM.
 - ALL SIGNS SHALL CONFORM WITH ALL CURRENT A.D.A. FEDERAL, STATE, AND LOCAL CODES & REGULATIONS.
 - PLACE "VAN ACCESSIBLE" SIGN IN FRONT OF VAN ACCESSIBLE SPACES ONLY.
 - PLACE SIGNS AS SHOWN ON SITE PLAN

B4 HANDICAP PAVEMENT MARKING AND SIGN
NO SCALE

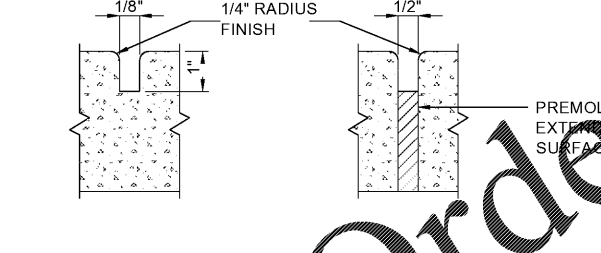
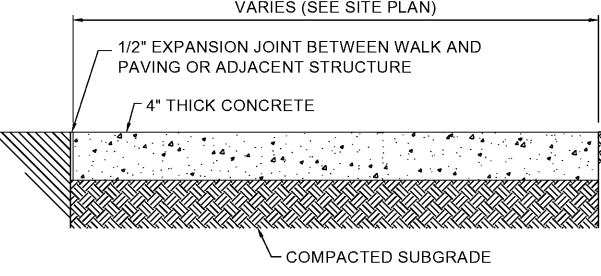


A4 CONCRETE WHEEL STOP
NO SCALE

B2 TAXILANE CENTERLINE MARKING
NO SCALE



A2 NOSE WHEEL BLOCK
NO SCALE



NOTE: CONTRACTION JOINT SHALL DIVIDE SIDEWALK INTO SQUARE PANELS. SPACING OF CONTRACTION JOINTS SHALL EQUAL THE WIDTH OF THE SIDEWALK.

NOTE: EXPANSION JOINTS @ 50' MAX. SPACING AND AT JUNCTIONS WITH OTHER STRUCTURES (I.E. CURBS, FOUNDATIONS, BUILDINGS, ETC.) AND RIGID PAVING.

A1 CONCRETE SIDEWALK
NO SCALE



DESIGNED BY:	DATE:
DRAWN BY:	DESCRIPTION:
CHECKED BY:	MARK:
SUBMITTED BY:	
ISSUED FOR CONSTRUCTION:	
DATE:	

OWNERS REPRESENTATIVE:	DESIGNED BY:
REGULATORY AGENCY:	DRAWN BY:
CONTRACT NUMBER:	CHECKED BY:
DATE OF CONTRACT:	SUBMITTED BY:
PROJECT NAME:	ISSUED FOR CONSTRUCTION:
PROJECT LOCATION:	DATE:

NORFOLK SOUTHERN CORP. 1200 PEACHTREE STREET, NE ATLANTA, GEORGIA 30309	
POND & COMPANY 2000 Peachtree Lane, Suite 2000 Atlanta, Georgia 30309 Phone: (404) 238-7240 Fax: (404) 238-7240 E-Mail: info@pond.com L.P. NO. 11105514	
CORPORATE AIRCRAFT HANGAR FOR NORFOLK SOUTHERN CORPORATION FULTON COUNTY AIRPORT - BROWN FIELD (F71) 3922 AMTOWN CIRCLE, SUITE 200 ATLANTA, GEORGIA 30308	
CIVIL DETAILS	

SHEET ID	C-501
----------	-------