

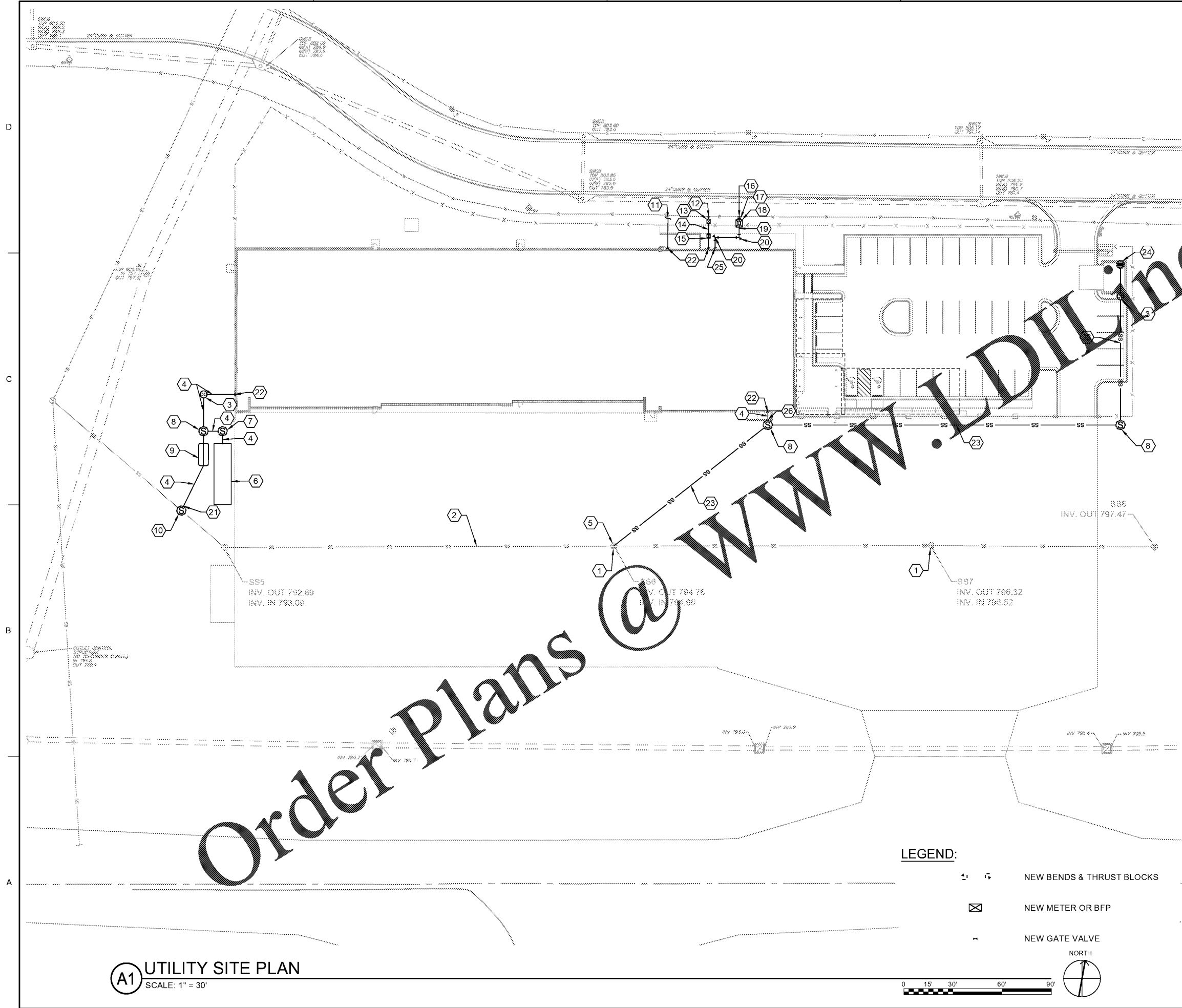
1

2

3

4

5



SHEET NOTES:

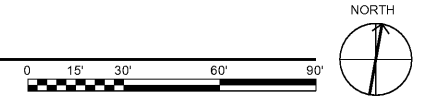
- REFER TO SHEET C-001 FOR GENERAL CIVIL NOTES, LEGENDS, AND ABBREVIATIONS.
- THIS SHEET IS PART OF A MULTI-SHEET SET OF CONSTRUCTION PLANS AND SHALL BE READ WITH THE FULL SET TO BEST ENSURE PROPER INTERPRETATION.
- EXISTING SANITARY SEWER INVERTS WERE OBTAINED FROM THE NORTH TERMINAL AREA PROJECT CONSTRUCTION DOCUMENTS. THIS SANITARY SEWER LINE IS TO BE INSTALLED BY OTHERS AND THE INVERTS ARE TO BE FIELD VERIFIED.
- REFER TO PIPE PROFILES ON SHEET CU201 FOR FURTHER INFORMATION ON NEW PIPE SIZES, MATERIALS, AND SLOPES AND FOR FURTHER INFORMATION ON STRUCTURE TYPES AND ELEVATIONS.
- CONCRETE THRUST BLOCKS SHOULD BE PROVIDED AT ALL BENDS AND TEES - DETAIL A4/C-505.

KEYNOTES:

- EXISTING SANITARY SEWER MANHOLE IN GRASS. BRING TOP TO GRADE IN CONCRETE PAVEMENT.
- 8" SANITARY SEWER LINE UNDER CONSTRUCTION BY OTHERS, TYP.
- SANITARY SEWER SERVICE CLEANOUT - DETAIL A1/C-505. SEE DETAIL A2/C-505 FOR CLEANOUT BOX ASSEMBLY.
- 4" PVC SANITARY SEWER PIPE.
- TIE INTO EXISTING SANITARY SEWER MANHOLE.
- UNDERGROUND CONTAINMENT TANK. SEE DETAIL A1/C-508.
- MANHOLE WITH GATE VALVE - DETAIL C4/C-505.
- SANITARY SEWER MANHOLE - DETAIL C2/C-504.
- 15 GPM OIL WATER SEPARATOR - DETAIL B3/C-511.
- CONNECT TO EXISTING SANITARY SEWER LINE WITH DOGHOUSE MANHOLE - DETAIL C1/C-505.
- NATURAL GAS SERVICE LINE. AIRPORT TO COORDINATE INSTALLATION OF SERVICE LINE WITH LOCAL NATURAL GAS PROVIDER.
- NEW 2" x 12" TAP, SADDLE, AND VALVE FOR DOMESTIC SUPPLY
- NEW 2" DOMESTIC METER PAID FOR BY THE CONTRACTOR, INSTALLED BY COA.
- 2" DOMESTIC WATER LINE.
- NEW 2" RPZA-BFP INSIDE HOTBOX 12" ABOVE GROUND PAID FOR AND INSTALLED BY CONTRACTOR.
- NEW 8" x 12" TAP, SADDLE, AND VALVE WITH BRACE BLOCK FOR FIRE SUPPLY.
- NEW 8" GATE VALVE ON NEW WATER LINE.
- NEW 8" DCV (FIRE SERVICE METER) PAID FOR BY THE CONTRACTOR, INSTALLED BY COA.
- 8" FIRE SERVICE LINE.
- 8" 90° BEND.
- OUTSIDE DROP CONNECTION - DETAIL C3/C-510.
- SEE PLUMBING AND FIRE PROTECTION PLANS FOR CONTINUATION OF UTILITIES.
- 6" PVC SANITARY SEWER PIPE.
- DUMPSTER PAD DRAIN - DETAIL A1/C-510.
- BACKFLOW PREVENTION PROVIDED INSIDE PUMP ROOM. SEE FIRE PROTECTION PLANS FOR DETAILS.
- INSIDE DROP CONNECTION - DETAIL A4/C-510.

LEGEND:

- NEW BENDS & THRUST BLOCKS
- NEW METER OR BFP
- NEW GATE VALVE



A1 UTILITY SITE PLAN
SCALE: 1" = 30'



| MARK | DESCRIPTION | DATE |
|------|-------------|------|
| | | |
| | | |
| | | |
| | | |
| | | |
| | | |
| | | |
| | | |
| | | |
| | | |
| | | |

| | | |
|---|---------------------|---------------------------------------|
| DESIGNED BY: AS | CHECKED BY: AS | ISSUED FOR CONSTRUCTION: EA |
| DRAWN BY: AS | DATE: 12/11/2021 | ISSUED FOR CONSTRUCTION: DP/MA/YYY |
| <small>OWNERS REPRESENTATIVE: HEALTHY HOMES, INC. (COURTESY OF THE CONTRACTOR) TYPE I & II, MANHOLE RINGS TYPE I & II, MANHOLE RINGS TO PROVIDER WHEN THE MANHOLE IS PROVIDED BY THE OWNER AND THE PRICE</small> | | |
| <small>NORFOLK SOUTHERN CORP. 1200 PEACHTREE STREET, NE ATLANTA, GEORGIA 30309 POND 3300 Parkway Lane, Suite 600 Atlanta, Georgia 30328 Phone: (404) 238-7240 Fax: (404) 238-7241 E-Mail: info@pond.com Website: www.pond.com LPT NO. 11100514</small> | | |

CORPORATE AIRPORT HANGAR FOR NORFOLK SOUTHERN CORPORATION
FULTON COUNTY AIRPORT - BROWN FIELD (F71)
3902 AMTOWN CIRCLE, SUITE 200
ATLANTA, GEORGIA 30308

UTILITY SITE PLAN

SHEET ID
CU101

7/13/2020 7:17:54 AM X:\FY19\190557\04_CAD BIM\04_02_CAD\CU101