

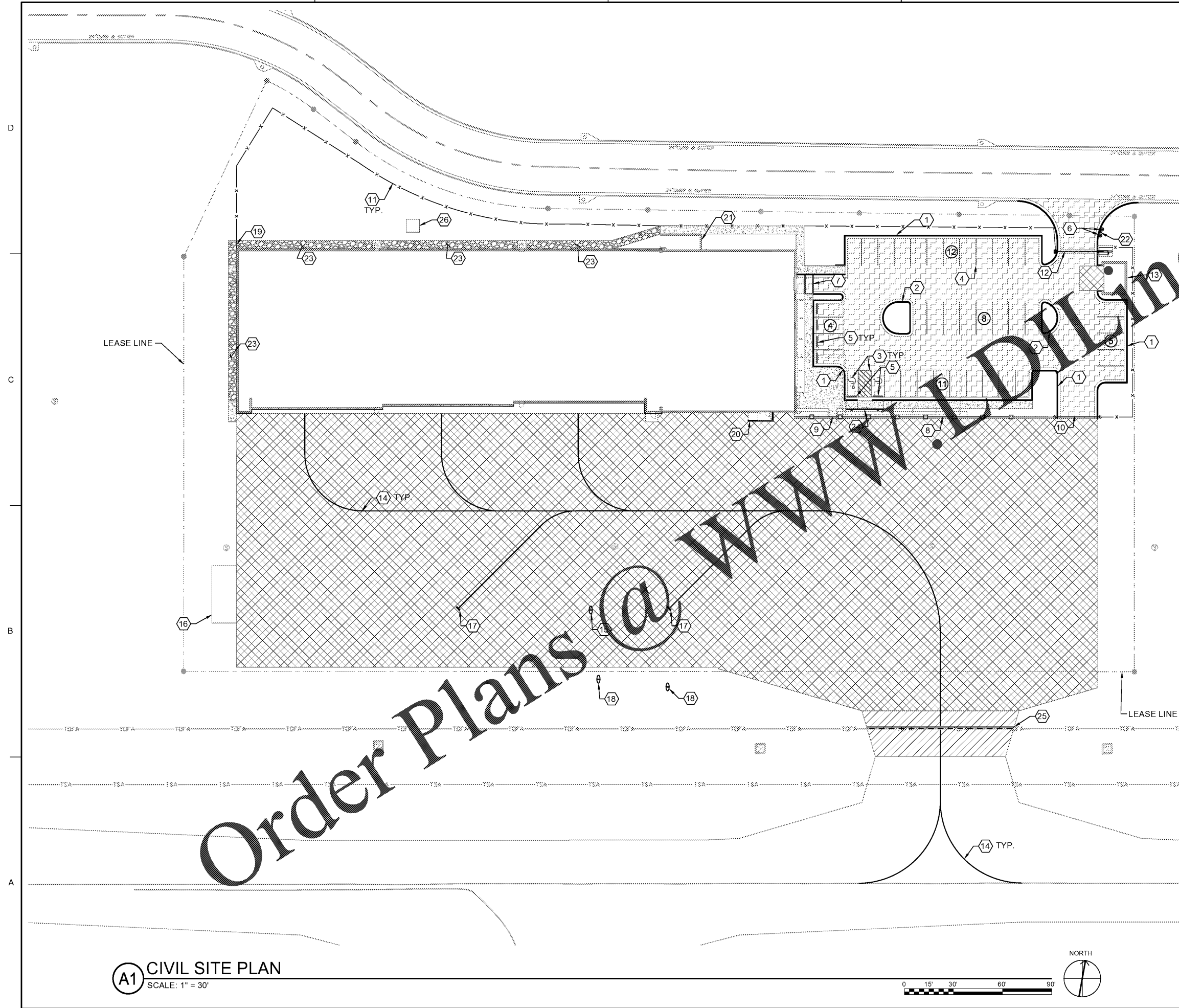
1

2

3

4

5



SHEET NOTES:

1. REFER TO SHEET C-001 FOR GENERAL CIVIL NOTES, LEGENDS, AND ABBREVIATIONS.
2. THIS SHEET IS PART OF A MULTI-SHEET SET OF CONSTRUCTION PLANS AND SHALL BE READ WITH THE FULL SET TO BEST ENSURE PROPER INTERPRETATION.

KEYNOTES:

1. TYPE 1 CONCRETE CURB & GUTTER - DETAIL C1/C-501.
2. TYPE 4 CONCRETE ROLLER CURB & GUTTER - DETAIL C1/C-501.
3. HANDICAP PAVEMENT MARKING AND SIGN - DETAIL B4/C-501.
4. 4" WHITE STRIPE (TYP.).
5. CONCRETE WHEEL STOP - DETAIL A4/C-501.
6. PIPE BOLLARD - DETAIL C5/C-510.
7. CROSSWALK PAVEMENT MARKING - DETAIL D3/C-501.
8. 12'-9" HIGH JET BLAST RESISTANT FENCE - MODEL BF-12 BLAST-SAFE BY TRANSP.
9. JET BLAST RESISTANT GATE WITH CARD READER & REQUEST TO EXIT.
10. 24' WIDE DOUBLE SWING GATE - DETAIL B1/C-509.
11. CHAIN LINK FENCE - DETAIL A1/C-507.
12. 26' WIDE AUTOMATIC PIVOT GATE - DETAIL A3/C-503. SEE ELECTRICAL PLANS FOR ADDITIONAL INFORMATION.
13. TRASH CONTAINER PAD AND ENCLOSURE - SEE STRUCTURAL AND ARCHITECTURAL PLANS FOR DETAILS.
14. TAXILANE CENTERLINE MARKING - DETAIL B2/C-501.
15. AIRCRAFT TIEDOWN IN CONCRETE PAVEMENT - DETAIL C1/C511.
16. FUEL TANK PAD - DETAIL A4/C-511.
17. NOSE WHEEL BLOCK BAR MARKING - DETAIL A2/C-501.
18. AIRCRAFT TIEDOWN IN GRASS - DETAIL A1/C-511.
19. 4' WIDE CHAIN LINK PERSONNEL GATE - DETAIL A1/C-509.
20. WHEELCHAIR ACCESSIBLE RAMP WITH 6" CURB - SEE ARCHITECTURAL PLANS FOR DETAILS.
21. MECHANICAL EQUIPMENT YARD - SEE MECHANICAL DRAWINGS FOR DETAILS.
22. CARD READER PEDESTAL - DETAIL A3/C-510.
23. 4" THICK, 5' WIDE, #57 STONE GRAVEL WALK.
24. HANDICAP RAMP - DETAIL C1/C-510.
25. NON-MOVEMENT AREA MARKING - DETAIL C3/C-501.
26. TRANSFORMER PAD - SEE ELECTRICAL PLANS FOR DETAILS.

LEGEND:

- STANDARD BITUMINOUS PAVEMENT - DETAIL B1/C-503
- CONCRETE PAVEMENT - DETAIL A1/C-502
- CONCRETE SIDEWALK - DETAIL A1/C-501
- TAXILANE ASPHALT PAVEMENT - DETAIL C1/C-503



MARK	DESCRIPTION	DATE

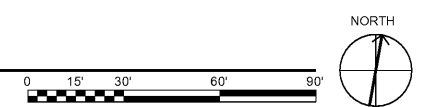
DESIGNED BY: AS	CHECKED BY: AS	ISSUED FOR CONSTRUCTION DP-11/11/2014
DRAWN BY: AS	SUBMITTED BY: EA	
OWNER REPRESENTATIVE GENERAL CONTRACTOR LICENSED PROFESSIONAL ENGINEER TYPE 14 - ARCHITECTURE TYPE 15 - MECHANICAL TYPE 16 - ELECTRICAL TYPE 17 - CIVIL TYPE 18 - PLUMBING TYPE 19 - MECHANICAL TYPE 20 - ELECTRICAL TYPE 21 - PLUMBING		
NORFOLK SOUTHERN CORP. 1200 PEACHTREE STREET, NE ATLANTA, GEORGIA 30309	 3300 Peachtree Lane, Suite 600 Atlanta, Georgia 30328 Phone: (404) 238-5740 Fax: (404) 238-5741 E-MAIL: (404) 238-5742	

CIVIL SITE PLAN

CORPORATE AIRCRAFT HANGAR FOR NORFOLK SOUTHERN CORPORATION
 FULTON COUNTY AIRPORT - BROWN FIELD (F71)
 3902 AMANTON CIRCLE, SUITE 200
 ATLANTA, GEORGIA 30308

SHEET ID
CS101

A1 CIVIL SITE PLAN
 SCALE: 1" = 30'



7/13/2020 7:14:25 AM X:\FY19\190557\04_CAD BIM\04_02_CAD\CS101