



MARK	DESCRIPTION	DATE

DESIGNED BY: AS	CHECKED BY: AS	ISSUED FOR CONSTRUCTION DD/MM/YYYY
--------------------	-------------------	---------------------------------------

OWNERS REPRESENTATIVE  
NORFOLK SOUTHERN CORP.  
1200 PEACHTREE STREET, NE  
ATLANTA, GEORGIA 30309

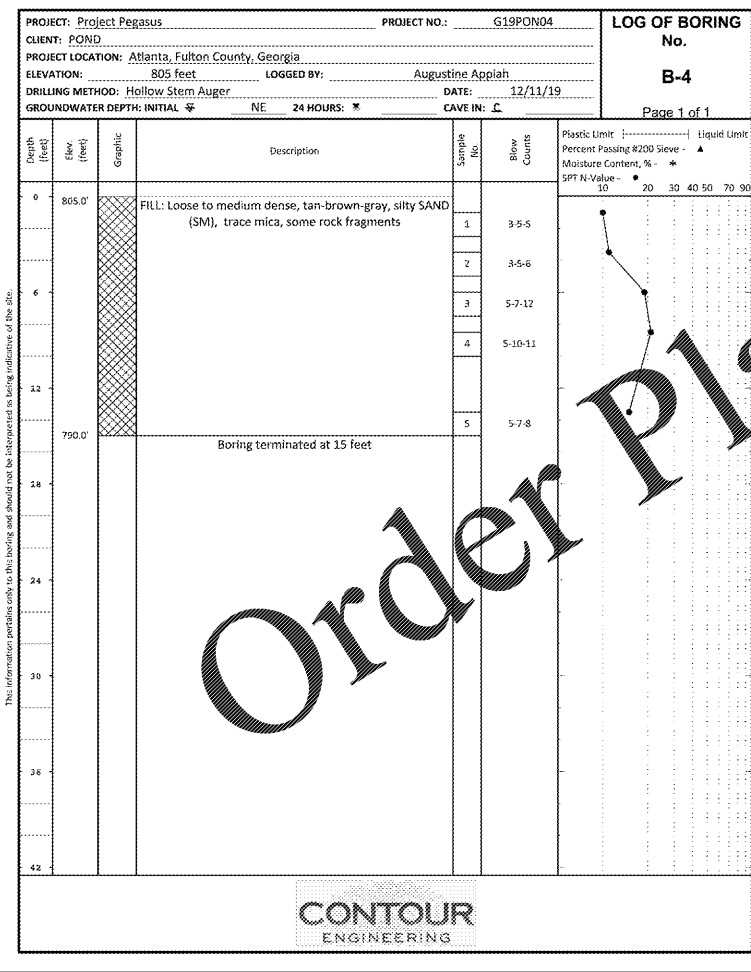
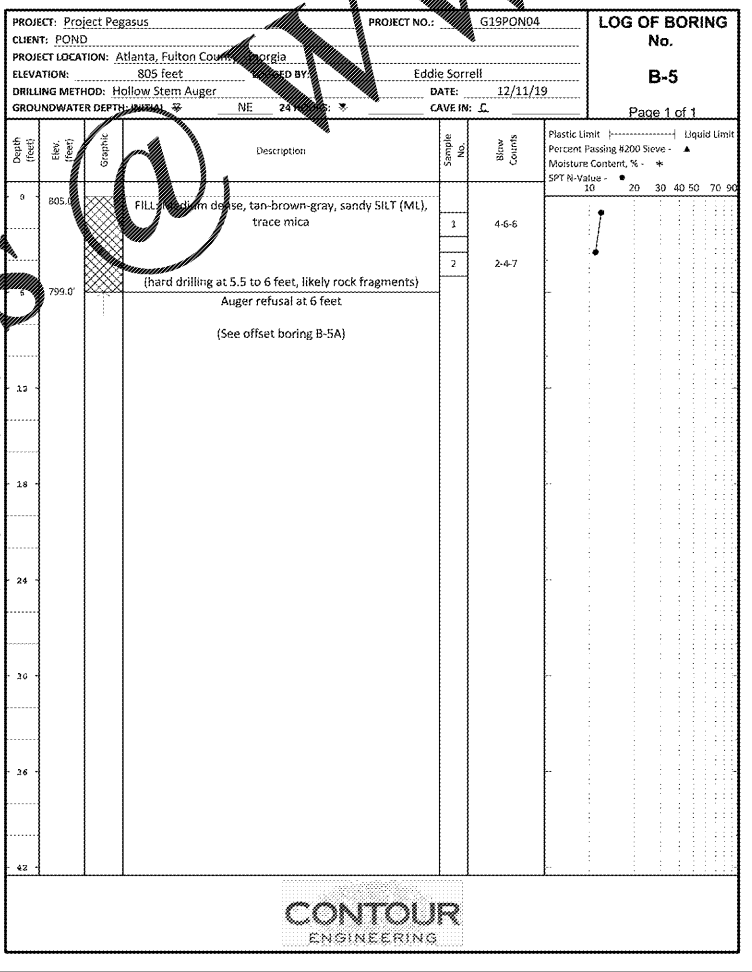
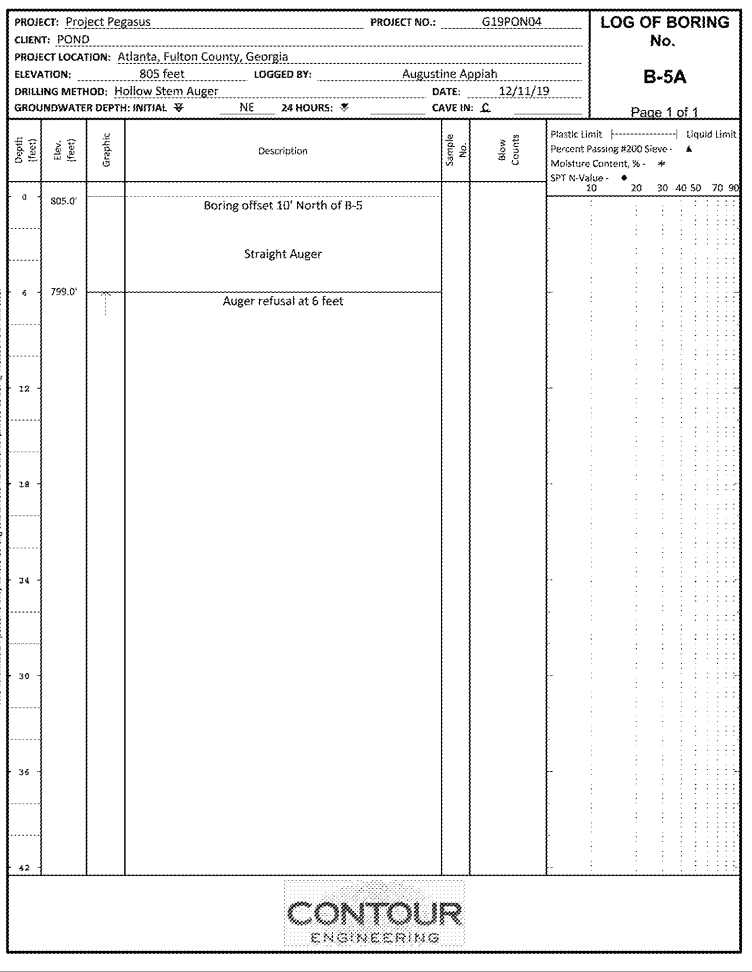
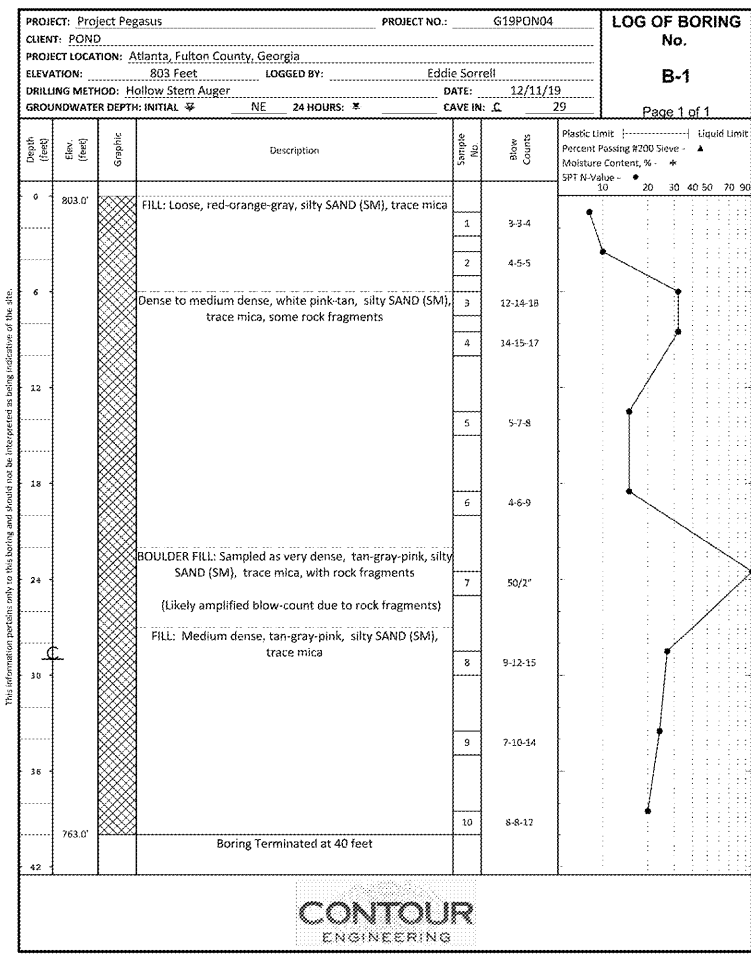
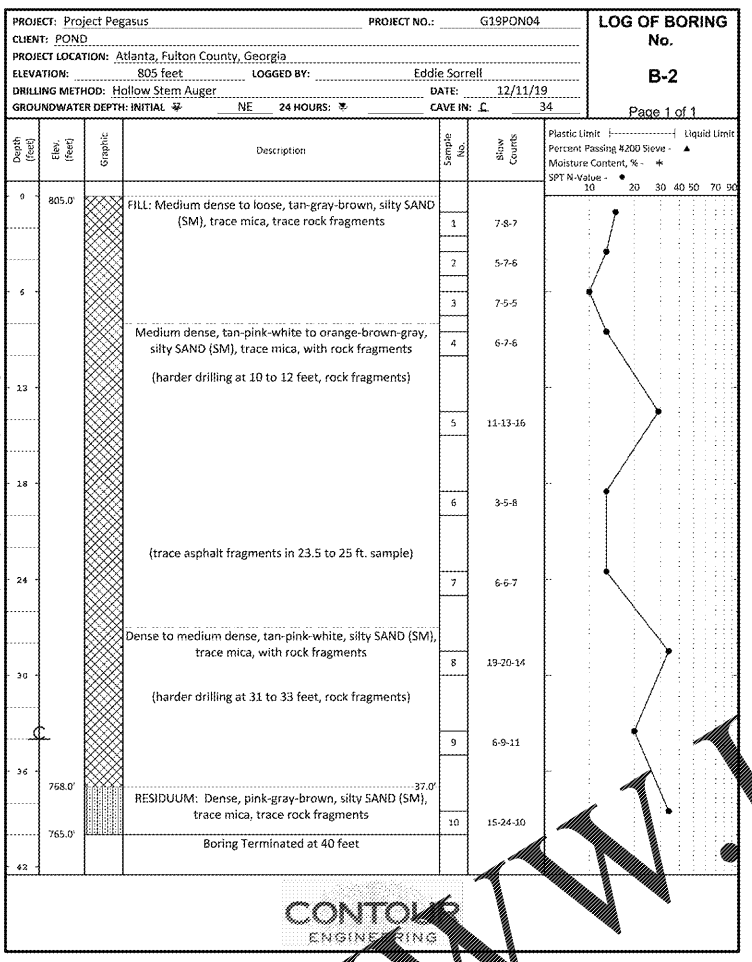
DESIGNED BY:  
AS  
DRAWN BY:  
AS  
CHECKED BY:  
AS  
SUBMITTED BY:  
EA

CORPORATE AIRCRAFT HANGAR FOR NORFOLK SOUTHERN CORPORATION  
FULTON COUNTY AIRPORT - BROWN FIELD (F71)  
3922 AMTICON CIRCLE, SUITE 200  
ATLANTA, GEORGIA 30308

**NORFOLK SOUTHERN CORPORATION**  
2000 Parkway Lane, Suite 800  
Atlanta, Georgia 30329  
Phone: (404) 238-7240  
Fax: (404) 238-7241  
EPC# NO. 11100514

SHEET ID  
BL701

CONSTRUCTION DOCUMENTS



7/13/2020 7:12:57 AM X:\FY19\1905\704 CAD BIM\04 02 CAD\BL701