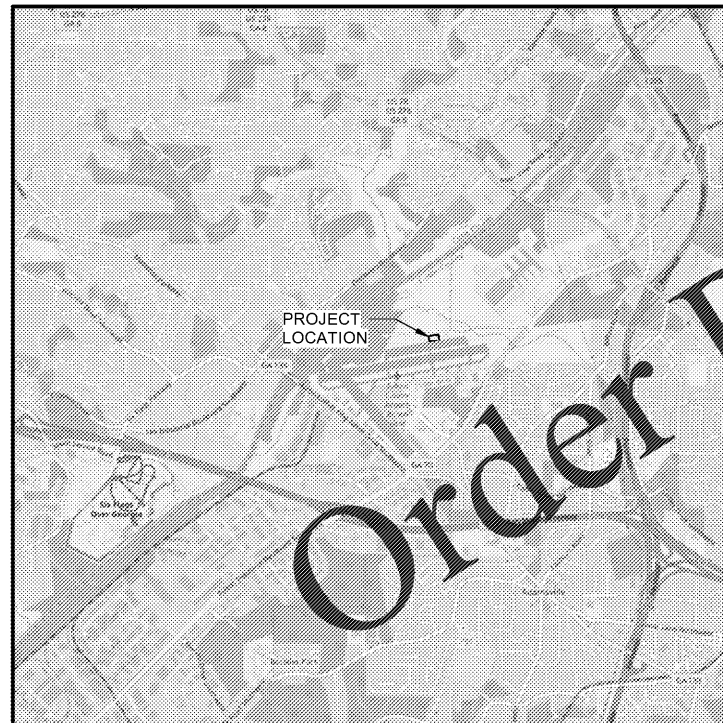
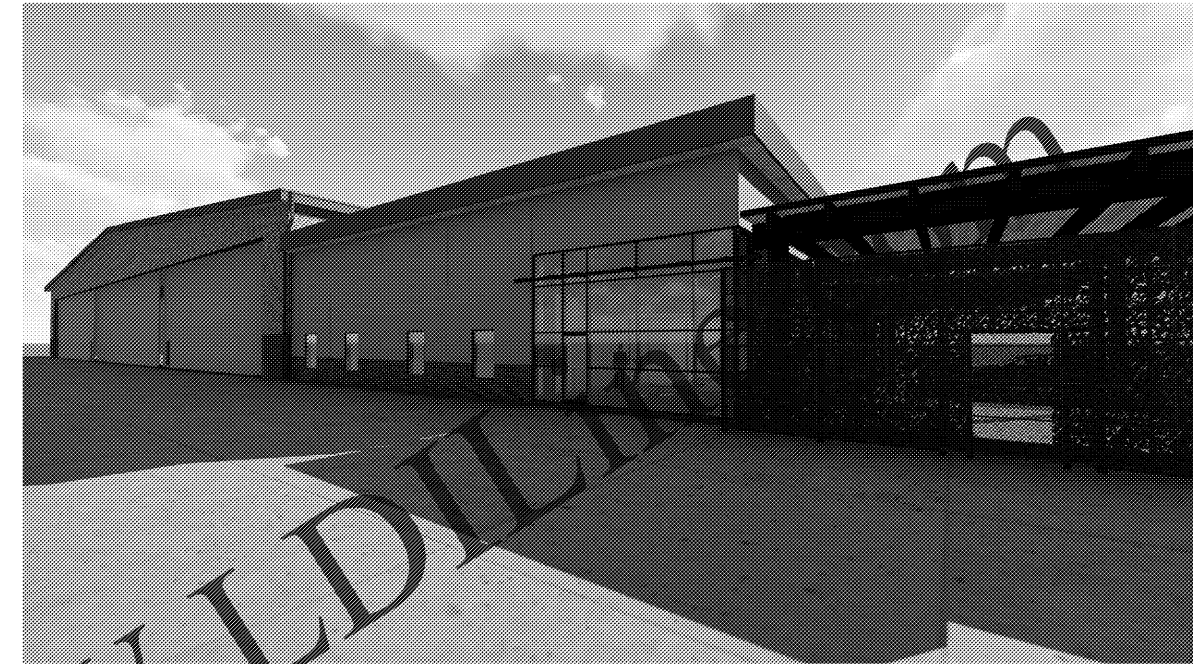
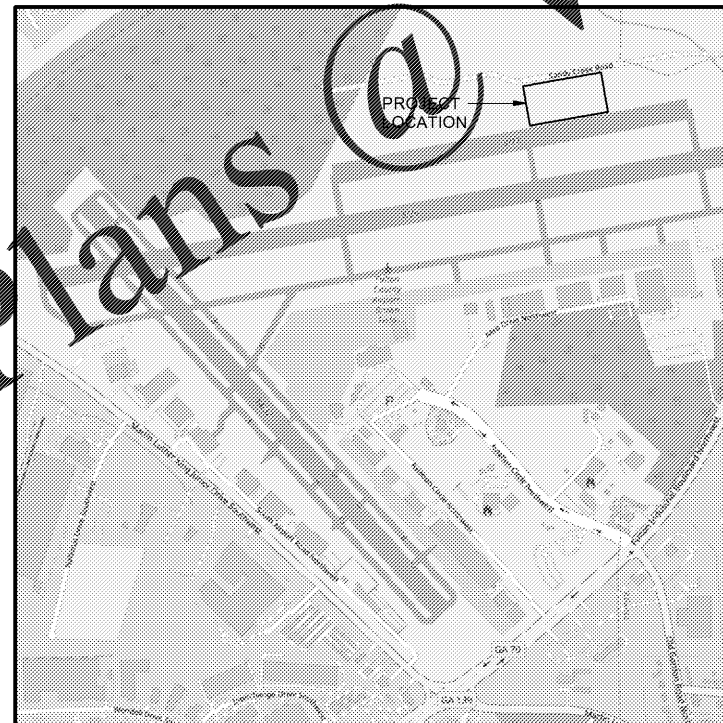


**CORPORATE AIRCRAFT HANGAR
FOR NORFOLK SOUTHERN CORPORATION**

**AT FULTON COUNTY AIRPORT - BROWN FIELD (FTY)
SANDY CREEK ROAD
ATLANTA, GEORGIA**



NORTH
VICINITY MAP
SCALE: N.T.S.



NORTH
LOCATION MAP
SCALE: N.T.S.

PROJECT DESIGN TEAM:

- | | |
|---|---|
| CIVIL ENGINEER

POND & COMPANY
3500 Parkway Lane
Suite 500
Peachtree Corners, Georgia 30092 | ARCHITECT

POND & COMPANY
3500 Parkway Lane
Suite 500
Peachtree Corners, Georgia 30092 |
| LANDSCAPE ARCHITECT

POND & COMPANY
3500 Parkway Lane
Suite 500
Peachtree Corners, Georgia 30092 | FIRE PROTECTION

POND & COMPANY
3500 Parkway Lane
Suite 500
Peachtree Corners, Georgia 30092 |
| STRUCTURAL ENGINEER

POND & COMPANY
3500 Parkway Lane
Suite 500
Peachtree Corners, Georgia 30092 | MECHANICAL, PLUMBING, ELECTRICAL ENGINEER

POND & COMPANY
3500 Parkway Lane
Suite 500
Peachtree Corners, Georgia 30092 |



MARK	DESCRIPTION	DATE

DESIGNED BY: E. Amis	CHECKED BY: K. Webb-Teague	ISSUED FOR CONSTRUCTION: DC-MMM-YYY
DATE: 11/19/2020	DATE: 11/19/2020	DATE: 11/19/2020

CORPORATE AIRCRAFT HANGAR FOR NORFOLK SOUTHERN CORPORATION
FULTON COUNTY AIRPORT - BROWN FIELD (FTY)
3825 AVIATION CIRCLE, SUITE 200
ATLANTA, GEORGIA 30339

COVER SHEET

SHEET ID
G-001



7/10/2020 1:34:23 PM BIM_960/1180557 - Pegasus/1180557_Pegasus_NS_Arch_CENTAL_v19_r3.rvt