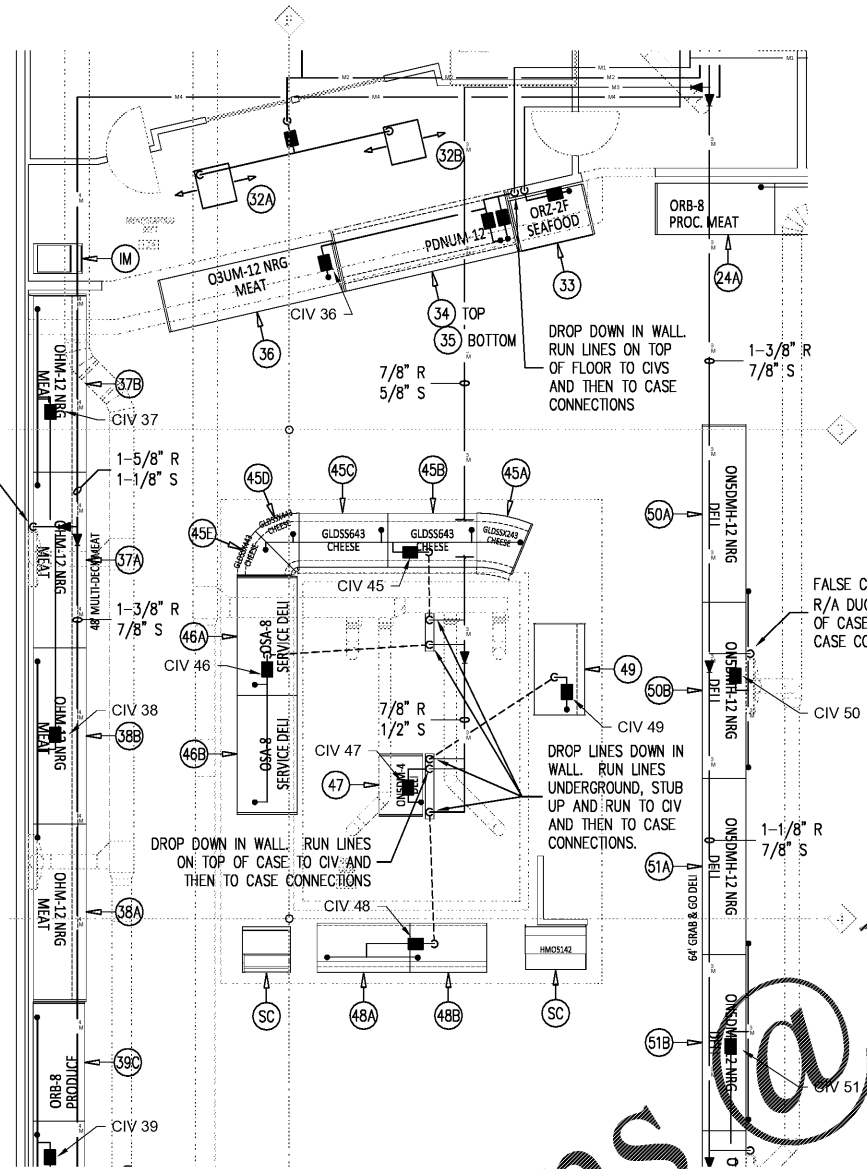
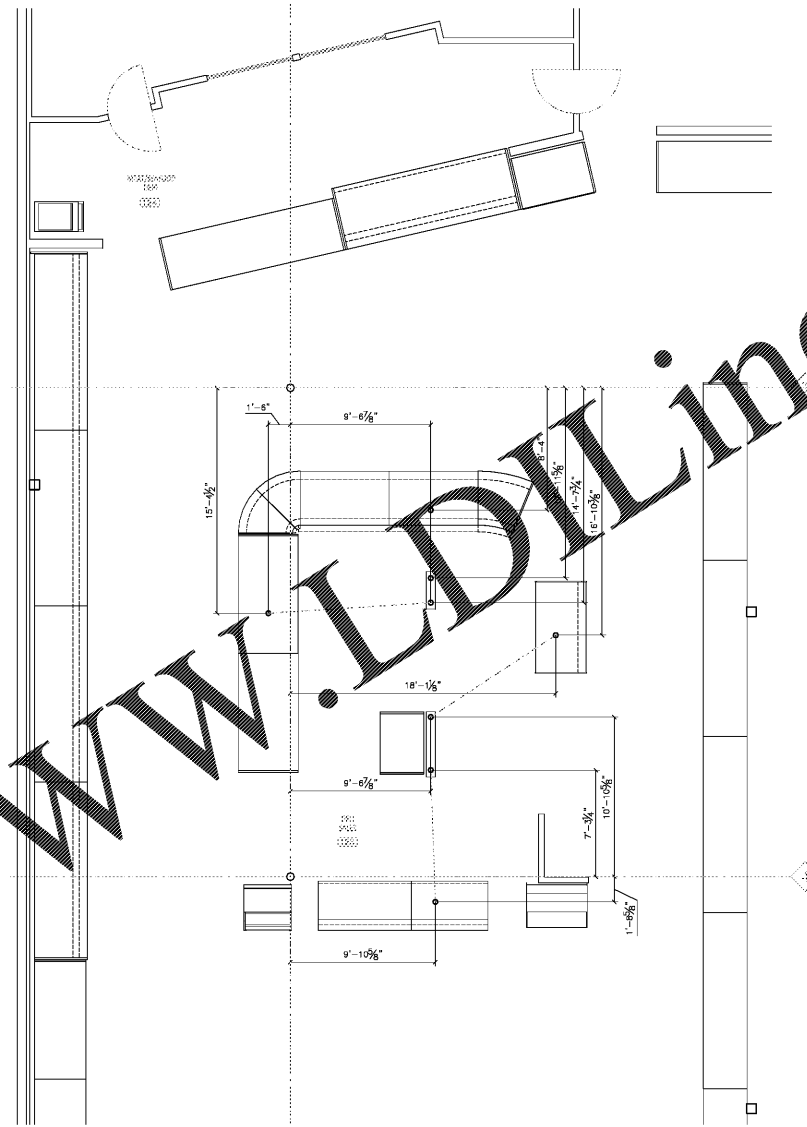


FALSE COLUMN DROP NEXT TO R/A DUCT. RUN LINES ON TOP OF CASES TO CIVS AND THEN TO CASE CONNECTIONS  
1-1/8" R TO 5/8" RR  
7/8" S



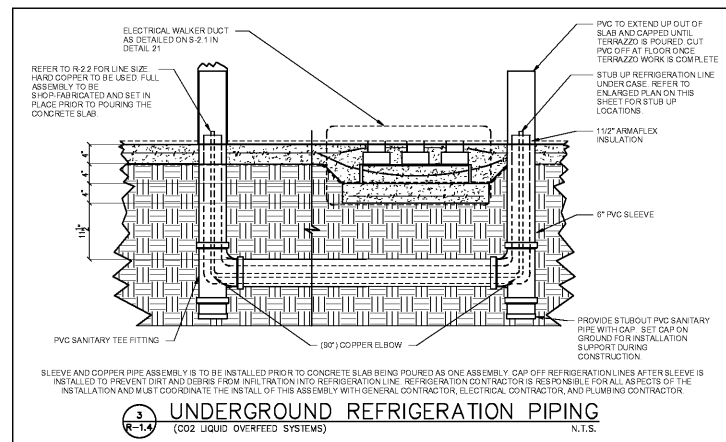
1 ENLARGED DELI AND MEAT/SEAFOOD ME PIPING PLAN  
1/4" = 1'-0"

FALSE COLUMN DROP NEXT TO R/A DUCT. RUN LINES ON TOP OF CASES TO CIVS AND THEN TO CASE CONNECTIONS



2 DELI ROUGH-IN PLAN  
1/4" = 1'-0"

CO <sub>2</sub> INSULATION TABLE			
PIPE SIZE	VERTICAL DROPS	HORIZONTAL RUNS	INSIDE MECHANICAL ROOM
ALL	1"	1 1/2"	2"



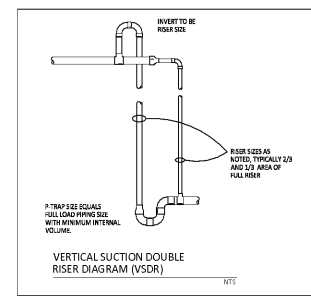
3 UNDERGROUND REFRIGERATION PIPING  
(CO<sub>2</sub> LIQUID OVERFEED SYSTEMS)  
N.T.S.

LEGEND

- LOW TEMP LOOP 1
  - LOW TEMP LOOP 2
  - MED TEMP LOOP 1
  - MED TEMP LOOP 2
  - MED TEMP LOOP 3
  - MED TEMP LOOP 4
  - UNDERGROUND PIPING
  - CONDENSATE PIPING
- ELECTRIC EVAPORATOR PRESSURE REGULATOR - FIELD PROVIDED & INSTALLED FOR CASES WHERE INDICATED (1 PER CIRCUIT)
  - CASE CONTROLLER - FACTORY INSTALLED AND PREWIRED IN CASES
  - CASE CONTROLLER - FIELD PROVIDED, INSTALLED AND WIRED FOR ALL WALK-IN'S
  - LIQUID LINE SOLENOID VALVE - FIELD MOUNT ONE PER COIL ON TOP OF EACH WALK-IN (USE DETAIL SHEET)
  - LIQUID LINE CHECK VALVE FIELD-MOUNTED ON TOP OF WALK-IN BOIL
  - SUCTION LINE CHECK VALVE FIELD-MOUNTED ON TOP OF WALK-IN BOIL
  - 24V HORN/BUZZER SUPPLIED BY PUBLIC & WIRED BY ELECTRICAL CONTRACTOR. SEE DETAIL SHEET # 1
  - 24V REFRIGERATION SYSTEM DETECTOR W/BUZZER BY PUBLIC, INSTALLED & WIRED BY ELECTRICAL CONTRACTOR
  - CHASE/FLOOR FOR REFRIGERATION PIPING
  - INSULATION PIPING IN WALL
  - WALK-IN BOIL
  - UNLESS OTHERWISE NOTED
  - ISOLATION VALVE WITH INTERNAL PRESSURE RELIEF - FIELD PROVIDED AND INSTALLED
  - FACTORY INSTALLED TEMPERATURE SENSOR
  - FIELD INSTALLED TEMPERATURE SENSOR, 2C 3AWG SHIELDS
  - CV (CHECK) ISOLATION VALVE (SEE DETAIL 1 ON R-3)
  - CASE CONTROLLER AT BOTTOM OF CASE
  - CASE CONTROLLER AT TOP OF CASE
  - CASE CONTROLLER IN DCP
  - DRILL CONTROL PANEL
  - ELECTRONIC EXPANSION VALVE (2C 3AWG)
  - PRESSURE TRANSDUCER, 2C 3AWG SHIELDED
  - TEMPERATURE SENSOR (SUCTION LINE), 2C 3AWG SHIELDED
  - DOOR SWITCH, 2C 3AWG SHIELDED
  - DEFROST TERMINATION PROBE, 2C 3AWG SHIELDED
  - OVER PRESSURE TOP SUCTION, 2C 3AWG SHIELDED FROM MECHANICAL CENTER OF SHUTDOWN PANEL
- ① SYSTEM NUMBER
  - ② SELF CONTAINED
  - ③ ICE MACHINE
- 3/24 MT LIQUID OVERFEED
  - 1 SECTION 2. RETURN
  - 2. SECTION 3. RETURN
  - VSDR - VERTICAL SUCTION DOUBLE
  - R - RETURN RISER
  - L - LIQUID
- NOTE: ELECTRICAL CONTRACTOR TO INSTALL & WIRE MILES FROM EACH WALK-IN BOIL TO LEAK DETECTOR CONTROL PANEL IN MECHANICAL CENTER.

NOTES APPLY TO ALL SHEETS, UON

- PIPING NOTES
- ALL OVERHEAD REFRIGERATION PIPING AT BACKROOM NEEDS TO STAY A MINIMUM 3" OFF OF THE BACK WALL OF THE SALES FLOOR AREA (WHICH IS THE WALL BEHIND THE SALES COUNTER)
  - UTILIZE THE STACKING OF REFRIGERATION LINES WHERE SPACE IS LIMITED
- CONTRACTOR NOTES
- REFRIGERATION CONTRACTOR SHALL SET AND START ALL SELF-CONTAINED EQUIPMENT, INCLUDING ICE MACHINES
  - REFRIGERATION CONTRACTOR SHALL INSTALL CPC PROBES IN COOLERS AND FREEZERS. PROBES ARE FURNISHED BY PUBLIX
  - ALL WALK-IN COOLERS AND FREEZERS ARE FURNISHED BY PUBLIX AND INSTALLED BY THE MANUFACTURER
  - REFRIGERATION CONTRACTOR SHALL INSTALL AND PIPE ALL EVAPORATOR COILS AND HAND VALVES IN COOLERS AND FREEZERS
  - FOR ALL OVERHEAD REFRIGERATION PIPING ABOVE THE SALES AREA, THE REFRIGERATION INSTALLATION CONTRACTOR SHALL PROVIDE AND INSTALL A DRAIN PAN AS PER TYPICAL DETAIL ON DRAWING R-3
  - SEE WATER HEATER / HEAT RECLAIM PIPING DETAIL FOR SETUP & CONTROL OF DOMESTIC WATER HEATING SYSTEM
  - REFRIGERATION CONTRACTOR SHALL MOUNT MANUFACTURER SUPPLIED CO<sub>2</sub> SENSOR UNDERMEATH MECHANICAL COOLING TONS IN STRUCTURE (AVOID EXPOSURE TO SUNLIGHT), CO<sub>2</sub> SENSOR AND WIRING PROVIDED BY REFRIGERATION CONTRACTOR
- AREAS OF HORIZONTAL RUNS BY TRADES
- ELECTRICAL: HANG AS CLOSE TO STRUCTURE AS POSSIBLE WHILE LEAVING ROOM FOR REFRIGERATION LINES AND HVAC DUCTS. THE INSTALLATION SHALL BE IN COMPLIANCE WITH NEC 300.4(E)
- REFRIGERATION: 32 IN. TO 36 IN. BELOW STRUCTURE, EXPOSED IN PROTOTYPE; IMMEDIATELY BELOW STRUCTURE
- FIRE SPRINKLER: 8 IN. ABOVE CEILING, WHERE EXPOSED IN PROTOTYPE, 8 IN. ABOVE BOTTOM CHORD OF STEEL GIRDER JOISTS AND JOISTS
- AIR CONDITIONING: 36 IN. BELOW STRUCTURE TO 40 IN. ABOVE CEILING, WHERE EXPOSED IN PROTOTYPE, HANG AS CLOSE UNDER BOTTOM OF STRUCTURE AS POSSIBLE WHILE LEAVING ROOM FOR REFRIGERATION LINES
- IF DEVIATION FROM THESE AREAS IS INDICATED, SUCH DEVIATION MUST BE AGREED UPON BY JOB SUPERINTENDENT AND PUBLIX REPRESENTATIVE
- DRAIN PAN NOTE:
- FOR ALL OVERHEAD DX REFRIGERATION PIPING IN FOOT PATH AREA OF SALES FLOOR, THE REFRIGERATION INSTALLATION CONTRACTOR SHALL PROVIDE AND INSTALL DRAIN PANS AS PER TYPICAL DETAIL 7 ON SHEET R-3
- REFRIGERATION AND PLUMBING CONTRACTORS SHALL COORDINATE REFRIGERATION DROPS AND VENT PIPES TO RUN BUNDLED TOGETHER.
- NOTE: REFRIGERATION INSTALLATION CONTRACTOR TO COORDINATE REFRIGERATION PIPING WITH DUCTWORK INSTALLER



VERTICAL SUCTION DOUBLE RISER DIAGRAM (VSDR)  
N.T.S.



552 Fort Evans Rd, Suite 200  
Leesburg, VA 20176  
www.dwyer.com  
GA COA #PEF 004622  
EXPIRES 06/30/2022

753-777-5388  
753-777-5388  
dwyr@dwyer.com  
publpx@dwyer.com

FISHER AND ASSOCIATES, LLC.  
 ARCHITECTS  
 PLANNERS  
 INTERIOR DESIGNERS  
 232 BELLEAIR BL., LARGO, FL 33074 727/484498

ENLARGED REFRIGERATION PLANS  
 EAST COBB PUBLIX - #1745  
 EAST COBB CROSSING SHOPPING CENTER  
 ROSEWELL ROAD  
 MARIETTA, GA 30062

RELEASED FOR:  
 BID  
 PERMIT 07/16/20  
 CONSTR.

REVISIONS:

GEORGIA  
 PROFESSIONAL ENGINEER  
 JOHN T. ALLEN  
 ENGINEER NO. 044831

**R-14**

Issue Date: 04-01-20  
 Project No: 220006

Order Plans

WWW.LDOnline.com