

LEGEND

- L — LOW TEMP LOOP 1
 - M — LOW TEMP LOOP 2
 - M — MED TEMP LOOP 1
 - M — MED TEMP LOOP 2
 - M — MED TEMP LOOP 3
 - M — MED TEMP LOOP 4
 - — — — — UNDERGROUND PIPING
 - — — — — CONDENSATE PIPING
- ⊠ ELECTRIC EVAPORATOR PRESSURE REGULATOR - FIELD PROVIDED & INSTALLED FOR CASES WHERE INDICATED (1 PER CIRCUIT)
 - ⊠ CASE CONTROLLER - FACTORY INSTALLED AND PREWIRED IN CASES
 - ⊠ CASE CONTROLLER - FIELD PROVIDED, INSTALLED AND WIRED FOR ALL WALK-IN'S
 - ⊠ LIQUID LINE SOLENOID VALVE - FIELD MOUNT ONE PER COIL ON TOP OF EACH WALK-IN (SEE DETAIL SHEET)
 - ⊠ LIQUID LINE CHECK VALVE FIELD-MOUNTED ON TOP OF WALK-IN BOX
 - ⊠ SUCTION LINE CHECK VALVE FIELD-MOUNTED ON TOP OF WALK-IN BOX
 - ⊠ 24V HORN/BUZZER SUPPLIED BY PUBLIC MARKET AND WIRED BY ELECTRICAL CONTRACTOR. SEE DETAIL SHEET 1/8-31
 - ⊠ 24V REFRIGERATION CONTROL SYSTEM SUPPLIED BY PUBLIC MARKET, INSTALLED & WIRED BY ELECTRICAL CONTRACTOR
 - ⊠ CHARGE/LEAK DETECTOR FOR REFRIGERATION
 - ⊠ CONDENSATE PIPING IN WALL
 - ⊠ WALK-IN CASE
 - ⊠ UNLESS OTHERWISE NOTED
 - ⊠ ISOLATION VALVE WITH INTERNAL PRESSURE RELIEF PROVIDED AND INSTALLED
 - ⊠ FACTORY INSTALLED TEMPERATURE SENSOR
 - ⊠ FIELD INSTALLED TEMPERATURE SENSOR, 2C 3BAR
 - ⊠ CV (CIRCUIT) ISOLATION VALVE (SEE DETAIL 1/8-31)
 - ⊠ CASE CONTROLLER AT BOTTOM OF CASE
 - ⊠ CASE CONTROLLER AT TOP OF CASE
 - ⊠ CASE CONTROLLER IN DCP
 - ⊠ DISSEL CONTROL PANEL
 - ⊠ ELECTRONIC EXPANSION VALVE (EXHANG)
 - ⊠ PRESSURE TRANSDUCER, 2C 3BAR SHIELDED
 - ⊠ TEMPERATURE SENSOR (SUCTION LINE), 2C 3BAR SHIELDED
 - ⊠ DOOR SWITCH, 2C 3BAR SHIELDED
 - ⊠ DEFROST TERMINATION PROBE, 2C 3BAR SHIELDED
 - ⊠ OVER PRESSURE (OP) SUCTION LINE, 2C 3BAR SHIELDED FROM MECHANICAL CENTER OF SHUTDOWN PANEL
- ① SYSTEM NUMBER
 - ⊙ SELF-CONTAINED
 - ⊙ ICE MACHINE
- 1/2" S SECTION
 - 1/2" VSDR - VERTICAL SUCTION DOUBLE
 - 1/2" L LIQUID
 - MT LIQUID OVERFEED
 - 2" DUCT
 - 4" RETURN
 - 4" RETURN
- NOTE:
ELECTRICAL CONTRACTOR TO INSTALL & WIRE MILES FROM EACH WALK-IN BOX TO LEAK DETECTOR CONTROL PANEL IN MECHANICAL CENTER.

NOTES APPLY TO ALL SHEETS, UON

PIPING NOTES

- ALL OVERHEAD REFRIGERATION PIPING AT BACKROOM NEEDS TO STAY A MINIMUM 3" OFF OF THE BACK WALL OF THE SALES FLOOR AREA (WHICH IS THE WALL BEHIND THE CASE LINE).
- UTILIZE THE STACKING OF REFRIGERATION LINES WHERE SPACE IS LIMITED.

CONTRACTOR NOTES

- REFRIGERATION CONTRACTOR SHALL SET AND START ALL SELF-CONTAINED EQUIPMENT, INCLUDING ICE MACHINES.
- REFRIGERATION CONTRACTOR SHALL INSTALL CPC PROBES IN COOLERS AND FREEZERS. PROBES ARE FURNISHED BY PUBLIC.
- ALL WALK-IN COOLERS AND FREEZERS ARE FURNISHED BY PUBLIC AND INSTALLED BY THE MANUFACTURER.
- REFRIGERATION CONTRACTOR SHALL INSTALL AND PIPE ALL EVAPORATOR COILS AND HAND VALVES IN COOLERS AND FREEZERS.
- FOR ALL OVERHEAD REFRIGERATION PIPING ABOVE THE SALES AREA, THE REFRIGERATION INSTALLATION CONTRACTOR SHALL PROVIDE AND INSTALL A DRAIN PAN AS PER TYPICAL DETAIL ON DRAWING 1/8-31.
- SEE WATER HEATER / HEAT RECLAIM PIPING DETAIL FOR SETUP & CONTROL OF DOMESTIC WATER HEATING SYSTEM.
- REFRIGERATION CONTRACTOR SHALL MOUNT MANUFACTURER SUPPLIED OR SENSOR UNDERMATH MECHANICAL COOLING TONS IN STRUCTURE (AVOID EXPOSURE TO SUNLIGHT), ON SENSOR AND WIRING PROVIDED BY REFRIGERATION CONTROL SUPPLIER.

AREAS OF HORIZONTAL RUNS BY TRADES

ELECTRICAL: HANG AS CLOSE TO STRUCTURE AS POSSIBLE WHILE LEAVING ROOM FOR REFRIGERATION LINES AND HVAC DUCTS. THE INSTALLATION SHALL BE IN COMPLIANCE WITH NEC 300.4(E).

REFRIGERATION: 32 IN. TO 36 IN. BELOW STRUCTURE, EXPOSED IN PROTOTYPE. TYPICAL DETAIL BELOW STRUCTURE.

FIRE SPRINKLER: 8 IN. ABOVE CEILING, WHERE EXPOSED IN PROTOTYPE, & 18 IN. ABOVE BOTTOM CHORD OF STEEL GIRDER JOISTS AND JOISTS.

AIR CONDITIONING: 36 IN. BELOW STRUCTURE TO 40 IN. ABOVE CEILING, WHERE EXPOSED IN PROTOTYPE. HANG AS CLOSE UNDER BOTTOM OF STRUCTURE AS POSSIBLE WHILE LEAVING ROOM FOR REFRIGERATION LINES.

IF DEVIATION FROM THESE AREAS IS INDICATED, SUCH DEVIATION MUST BE AGREED UPON BY JOB SUPERINTENDENT AND PUBLIC REPRESENTATIVE.

DRAIN PAN NOTE:

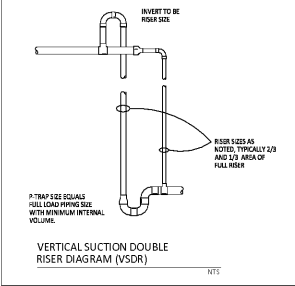
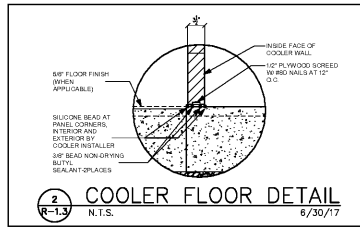
FOR ALL OVERHEAD DX REFRIGERATION PIPING IN FOOT PATH AREA OF SALES FLOOR, THE REFRIGERATION INSTALLATION CONTRACTOR SHALL PROVIDE AND INSTALL DRAIN PANS AS PER TYPICAL DETAIL 7 ON SHEET 1/8-31.

REFRIGERATION AND PLUMBING CONTRACTORS SHALL COORDINATE REFRIGERATION DROPS AND VENT PIPES TO RUN BUNDLED TOGETHER.

NOTE:

REFRIGERATION INSTALLATION CONTRACTOR TO COORDINATE REFRIGERATION PIPING WITH DUCTWORK INSTALLER.

PIPE SIZE	VERTICAL CHURNS	HORIZONTAL RUNS	INSIDE MECHANICAL ROOM
ALL	1"	1 1/2"	2"



PUBLIC MARKET PROTOTYPE
20M
 EXPANDED
 RECEIVED: 09.14.18
 CORPORATE OFFICES, FACILITIES DESIGN
 BOX 407, LAKELAND, FL 33802
 (863) 688-2525
 PHYSICAL ADDRESS:
 3300 AIRPORT BL., LAKELAND, FL 33811
Publix
 SUPER MARKETS
 FISHER AND ASSOCIATES, LLC.
 ARCHITECTS
 PLANNERS
 INTERIOR DESIGNERS
 233 BELLEAIR BL., CLEARWATER, FL 33764 727/444308
 REFRIGERATION PIPING PLAN - PUMPED LIQUID OVERFEED (MED. TEMP.)
EAST COBB PUBLIX - #1745
 EAST COBB CROSSING SHOPPING CENTER
 ROSEWELL ROAD
 MARIETTA, GA 30067
 RELEASED FOR:
 BID
 PERMIT 07/16/20
 CONSTR.
 REVISIONS:
 GEORGIA
 PROFESSIONAL SEAL
 JOHN T. ALLEN
 ENGINEER NO. 044831
R-13
 Issue Date: 04-01-20
 Project No.: 220006

1 MEDIUM TEMPERATURE CO₂ LIQUID OVERFEED PIPING PLAN
 1/8" = 1'-0"



552 Front Evans Rd, Suite 200
 Leesburg, VA 20176
 www.dwyer.com
 GA COA #PEF 004622
 EXPIRES 06/30/2022
 703-777-5388
 fax: 703-777-5388
 pdw@dwyr.com