

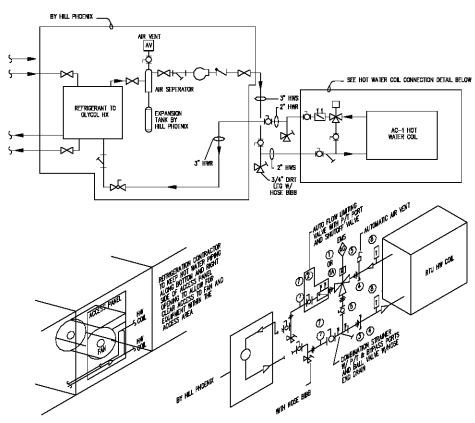
1 HVAC FLOOR PLAN
1/8" = 1'-0"

NUMBERED NOTES

- M001 FURNISH AND INSTALL FLEXIBLE CONNECTIONS IN DUCT RISER TO RTU.
- M002 PROVIDE ACCESS DOOR FOR DUCT SMOKE DETECTOR AS REQUIRED. SIZE AND LOCATE DOOR TO ALLOW FOR MAINT. ACCESS TO THE SMOKE DETECTOR'S SENSING PRESSURE.
- M003 SUPPORT DUCT RISERS TO THE RTU USING THE ROOF SUPPORT SYSTEM. SEE DUCT HANGER DETAIL ON M-2.1.
- M004 DUAL WALL DUCT (SHOWN HATCHED).
- M005 DUCT WRAP INSULATION WHEN IN ENCLOSED AREAS. REFER TO DETAIL ON M-2.1.
- M006 SIDEWALL REGISTER SHALL BE SET TO THROW AIR PARALLEL WITH THE FLOOR ANGLE DOWN AS NEEDED TO COORDINATE WITH STRUCTURE. MAX 2° SLOPE DOWN.
- M007 MOUNT TEMPERATURE SENSOR IN REGISTER NECK OR RETURN BRANCH DUCT BETWEEN THE REGISTER AND TRUNK DUCTWORK. SEE DETAIL ON M-2.1.
- M008 NOT USED.
- M009 MOUNT ANSUL PULL STATION AT 48" MAX. LABELS TO 7" FIRE EXTINGUISHER. 6H-1"
- M010 OPEN FLOOR DUCT SHALL BE EQUAL TO METAL FAB PIC PRESSURE INDUSTRIAL CHIMNEY. EXPOSED FLUE PIPE BETWEEN CEILING AND OPENING SHALL HAVE STAINLESS STEEL EXTERIOR.
- M011 PROVIDE HEADACHE BARS, AS NEEDED, BELOW DUCTWORK RUNNING LOW IN RECEIVING AREA TO PROTECT FROM DAMAGE.
- M012 PROVIDE REDUCING TEES WITH TURNING VANES.
- M013 FACTORY PROVIDED 2-SPEED INLINE EXHAUST FAN PROVIDED BY POT WASH MANUFACTURER. PC TO RUN 6" PVC FROM FAN DISCHARGE UP TO ROOF. SEE DETAIL ON PLUMBING PLANS FOR MORE INFORMATION.
- M014 #10 DOUBLE WALL, CATEGORY 1, TYPE B VENT PIPE UP TO LISTED ROOF VENT CAP. SEE DETAIL ON SHEET M-4. SLOPE HORIZONTAL VENT RUN WITH 45 DEGREE ELBOWS TO PENETRATION LOCATION.

AIR DISTRIBUTION SCHEDULE

MARK	QTY.	NECK SIZE	USE	TYPE	MANUFACTURER	MODEL	MATERIAL	FINISH	MOUNTING	SECTION	NOTES	COMMENTS
A	2	8" x 8"	SUPPLY	DUCT REGISTER	LOWAR	R8S-3	ALUMINUM	WHITE	LAY-IN	FLEX		WORLD
B	10	8" x 8"	SUPPLY	SQ. PLAUQE	METALAIR	5750-6-AS	ALUMINIZED STEEL	WHITE	LAY-IN	FLEX		WORLD
C	1	12" x 12"	SUPPLY	SQ. PLAUQE	METALAIR	5750-6-AS	ALUMINIZED STEEL	WHITE	LAY-IN	FLEX		WORLD
D	8	8" x 8"	SUPPLY	SQ. PLAUQE	METALAIR	5750-6-AS	ALUMINIZED STEEL	WHITE	LAY-IN	FLEX		WORLD
E	2	8" x 8"	SUPPLY	SQ. PLAUQE	METALAIR	5750-6-AS	ALUMINIZED STEEL	WHITE	LAY-IN	FLEX		WORLD
F	6	12" x 12"	SUPPLY	PERF. DIFFUSER	METALAIR	7878-A-8	ALUMINUM	WHITE	LAY-IN	FLEX		WORLD
G	2	14" x 14"	SUPPLY	WALL REGISTER	METALAIR	H400-1	ALUMINUM	WHITE	SURFACE	HARD		WORLD, SQ. TO ROUND TRANS.
H	1	19" x 12"	SUPPLY	WALL REGISTER	METALAIR	H400-1	ALUMINUM	WHITE	SURFACE	HARD		WORLD, SQ. TO ROUND TRANS.
I	1	8" x 8"	RETURN	SQ. PLAUQE	METALAIR	5750-6-AS	ALUMINIZED STEEL	WHITE	LAY-IN	FLEX		WORLD
J	1	8" x 8"	RETURN	SQ. PLAUQE	METALAIR	5750-6-AS	ALUMINIZED STEEL	WHITE	LAY-IN	FLEX		WORLD
K	1	14" x 14"	RETURN	SQ. PLAUQE	METALAIR	5750-6-AS	ALUMINIZED STEEL	WHITE	LAY-IN	FLEX		WORLD
L	1	8" x 8"	RETURN	SQ. PLAUQE	METALAIR	5750-6-AS	ALUMINIZED STEEL	WHITE	LAY-IN	FLEX		WORLD
M	1	8" x 8"	RETURN	SQ. PLAUQE	METALAIR	5750-6-AS	ALUMINIZED STEEL	WHITE	LAY-IN	FLEX		WORLD
N	1	8" x 8"	RETURN	SQ. PLAUQE	METALAIR	5750-6-AS	ALUMINIZED STEEL	WHITE	LAY-IN	FLEX		WORLD
O	1	12" x 12"	TRANSFER	WALL REGISTER	METALAIR	H400-1	ALUMINUM	WHITE	SURFACE	HARD		WORLD, SQ. TO ROUND TRANS.
P	2	12" x 12"	TRANSFER	WALL REGISTER	METALAIR	H400-1	ALUMINUM	WHITE	SURFACE	HARD		WORLD, SQ. TO ROUND TRANS.
Q	1	12" x 12"	TRANSFER	WALL REGISTER	METALAIR	H400-1	ALUMINUM	WHITE	SURFACE	HARD		WORLD, SQ. TO ROUND TRANS.
R	8	10" x 10"	TRANSFER	DOOR GRILLE	METALAIR	DDOF	ALUMINUM	SATIN SILVER	DOOR			12x12 MODULE, SQ. TO ROUND TRANS.
S	10	12" x 12"	TRANSFER	DOOR GRILLE	METALAIR	DDOF	ALUMINUM	SATIN SILVER	DOOR			12x12 MODULE, SQ. TO ROUND TRANS.



2 AC HOT WATER HYDRONIC SYSTEM DETAILS
1/8" = 1'-0"

3 HVAC - R/A REGISTER DETAIL
1/8" = 1'-0"

PUBLIX PROTOTYPE
BASED ON DESIGN
20M
EXPANDED
RECEIVED: 09.14.18

CORPORATE OFFICES, FACILITIES DESIGN
BOX 407, LAWRENCE, FL 33002
(850) 686-2525
PHYSICAL ADDRESS:
3300 IMPACT BLVD., LAWRENCE, FL 33011

Publix
SUPER MARKETS

FISHER AND ASSOCIATES, L.L.C.
ARCHITECTS
PLANNERS
INTERIOR DESIGNERS
235 BELLWOOD CLEWISTON FL 33744 772/443408

HVAC FLOOR PLAN
EAST COBB PUBLIX - #1745
EAST COBB CROSSING SHOPPING CENTER
ROSEWELL ROAD
MARIETTA, GA 30062

RELEASED FOR:
BD
PERMIT 07/16/20
CONSTR.

REVISIONS:

07/16/2020

M-1

Issue Date: 04-01-20
Project No.: 220006

DWYER ENGINEERING
552 Front Evans Rd, Suite 200
Leesburg, VA 20176
www.dwyer.com
GA COA #PEF 004622
EXPIRES 06/30/2022

753-777-5988
dwg@dwyer.com
Project No.: 220006