

1 DWV PLUMBING PLAN
1/8" = 1'-0"

Plumbing DFU's Grease				
FIXTURE ID	WFU Each	QUANTITY	WFU Total	Description
CD-2	6	2	12	4" CASE DRAIN, US PLASTICS 4X3 PVC REDUCER
D-1	5	2	10	1 1/2" DIA. FLOOR DRAIN, CAST IRON GRATE, SHALLOW BODY
D-2	5	20	100	1 1/2" DIA. FLOOR DRAIN, NICKEL BRONZE GRATE, SHALLOW BODY
FS-1	6	7	42	1 1/2" DIA. FLOOR SINK, PVC, DOME STRAINER 1/2 GRATE, SEDIMENT BUCKET
FS-2	5	1	5	1 1/2" DIA. CAST IRON SINK, 1/2" GRATE, ABS DOME SECONDARY STRAINER
P-7	1	10	10	Hand Sink
P-25	2	1	2	Car Wash Wop Basin
TD-1	8	2	12	8" WIDE TRENCH DRAIN
TD-15	8	1	8	8" WIDE TRENCH DRAIN
			158	

Plumbing DFU's NON-Grease				
FIXTURE ID	WFU Each	QUANTITY	WFU Total	Description
CD-1	0.5	56	28	1/2" CASE DRAIN, US PLASTICS 4X3 PVC REDUCER
D-1	5	3	15	1 1/2" DIA. FLOOR DRAIN, CAST IRON GRATE, E. SHALLOW BODY
D-2	5	3	15	1 1/2" DIA. FLOOR DRAIN, NICKEL BRONZE GRATE, E. SHALLOW BODY
D-3	5	5	25	1 1/2" DIA. FLOOR DRAIN, NICKEL BRONZE GRATE, E. SHALLOW BODY
D-4	5	2	10	1 1/2" DIA. FLOOR DRAIN, NICKEL BRONZE GRATE, E. SHALLOW BODY
FS-1	5	2	10	1 1/2" DIA. FLOOR SINK, PVC, DOME STRAINER 1/2 GRATE, SEDIMENT BUCKET
P-1	4	1	4	Water Closet
P-2	4	5	20	Water Closet ADA
P-3	2	1	2	Urinal
P-4	2	5	10	Urinal
P-5	2	2	4	Urinal
P-7	1	1	1	Hand Sink
P-10	2	1	2	Hand Sink
P-11	2	1	2	Hand Sink
P-18	0.5	1	0.5	Water Sink ADA with 3/8" Pipe
P-19	0.5	1	0.5	Water Sink ADA
			150	

PLUMBING LEGEND - DWV

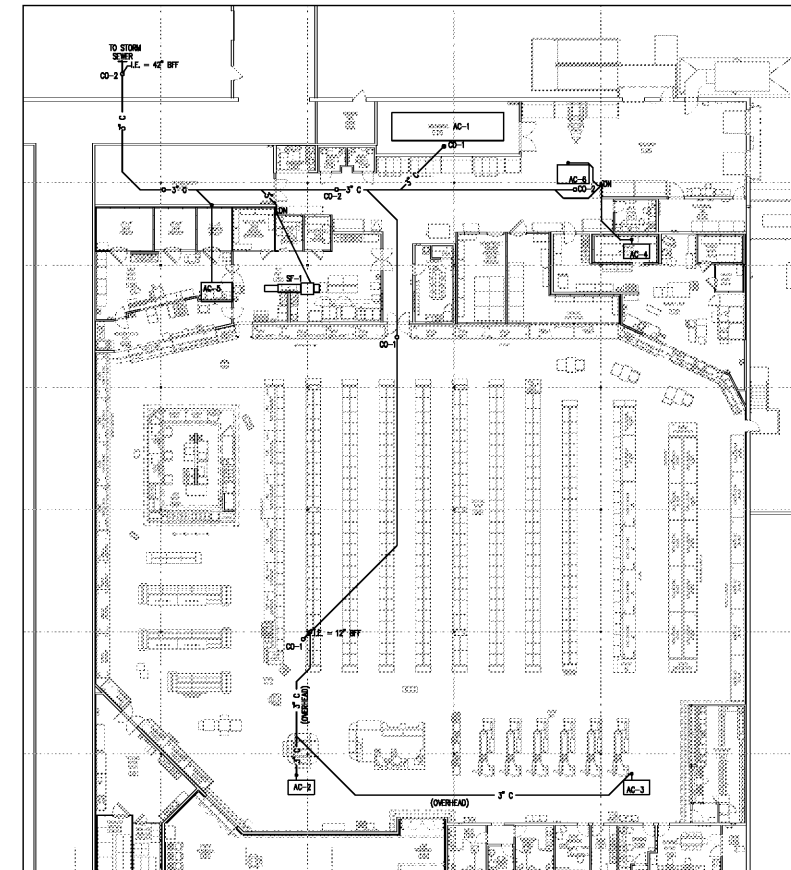
- SOL LINE
- WASTE LINE
- C CONDENSATE
- SAFE WASTE
- VENT LINE
- GREASE WASTE
- CD CASE DRAIN
- TD-1 TRENCH DRAIN
- FS-1 FLOOR SINK
- D-1 FLOOR DRAIN
- CO FLUSH CLEANOUT
- WCO WALL CLEANOUT
- VTR VENT-THRU-ROOF
- ETR EXISTING TO REMAIN

KEYNOTES

- P105 ALL FLOOR DRAINS (D) CONNECT TO 3" UNLESS OTHERWISE NOTED
- P106 1/2" CASE DRAIN (CD) FOR INDIRECT WASTE FROM EVAPORATORS. SEE SHEET P-1 FOR RELATIVE TO INDIRECT WASTE CONDENSATE LINES
- P107 THIS SECTION OF PIPE SHALL BE CAST IRON OR COPPER DUE TO POTENTIAL HOT WATER IN WASTE STREAM
- P108 ALL VTR MUST BE A MINIMUM OF 3" AWAY FROM ROOF CURB AND 12" AWAY FROM ANY AC UNIT OR INTAKE OR SUPPLY AIR FAN.

RTU DRAINAGE PIPING NOTE

CONTRACTOR SHALL PROVIDE AND INSTALL CONDENSATE DRAIN LINE (MATCH RTU'S CONNECTION SIZE - VERIFY FROM ROOF TOP UNIT TO 2" STUMP) STUBBED THRU ROOF. REFER TO DETAIL 18 ON SHEET P-4.



2 RTU CONDENSATE PLAN
1/16" = 1'-0"

100% COMPLIANT WITH ALL APPLICABLE CODES. THESE PLANS ARE THE PROPERTY OF FISHER AND ASSOCIATES, LLC. NO PART OF THESE PLANS MAY BE REPRODUCED OR TRANSMITTED IN ANY FORM OR BY ANY MEANS, ELECTRONIC OR MECHANICAL, WITHOUT THE WRITTEN PERMISSION OF FISHER AND ASSOCIATES, LLC.

Publix SUPER MARKETS

FISHER AND ASSOCIATES, LLC.
ARCHITECTS
PLANNERS
INTERIOR DESIGNERS
235 BELLARVO CLEANWATER BL. 30704 770/464408

DWV PLUMBING PLAN
EAST COBB PUBlix - #1745
EAST COBB CROSSING SHOPPING CENTER
ROSEWELL ROAD
MARIETTA, GA 30062

RELEASED FOR:
BD
PERMIT 07/16/20
CONSTR.

REVISIONS:

07/16/2020

1 DWYER ENGINEERING
2
3
4
5
6
7
8
9
10
11
12
13
14
15
16
17
18
19
20
21
22
23
24
25
26
27
28
29
30
31
32
33
34
35
36
37
38
39
40
41
42
43
44
45
46
47
48
49
50
51
52
53
54
55
56
57
58
59
60
61
62
63
64
65
66
67
68
69
70
71
72
73
74
75
76
77
78
79
80
81
82
83
84
85
86
87
88
89
90
91
92
93
94
95
96
97
98
99
100

This document has been electronically signed and sealed on date shown using Bluebeam and Metrow GlobalSign A252 key

Issue Date: 04-01-20
Project No.: 220006

P-3