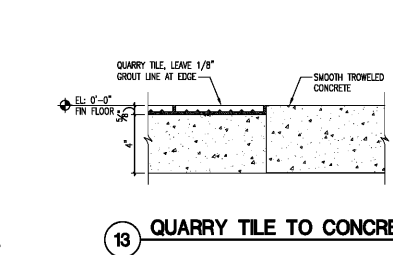
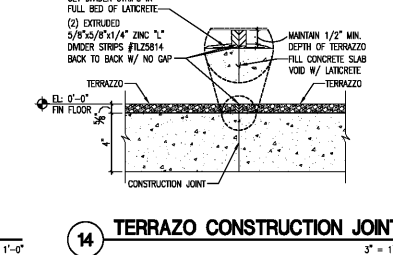
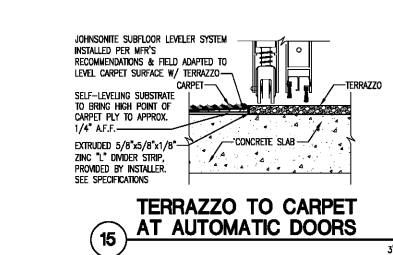
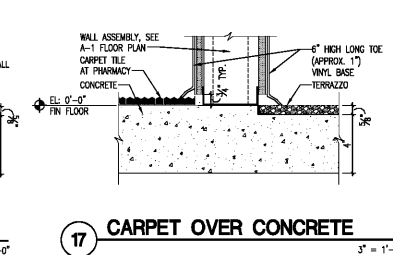
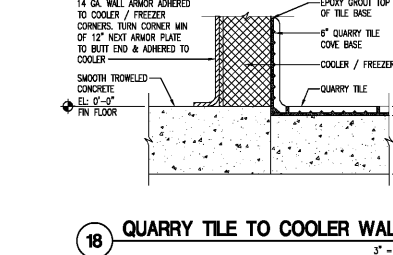
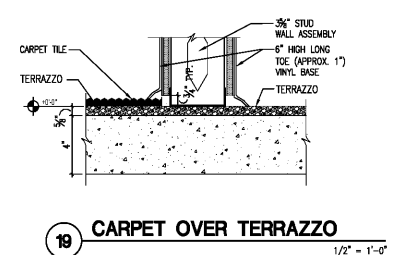
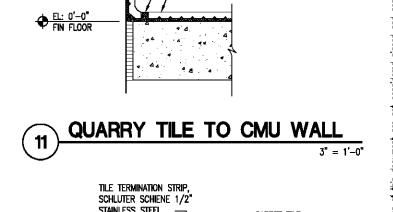
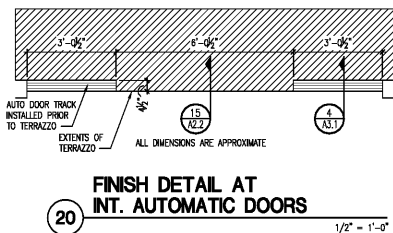
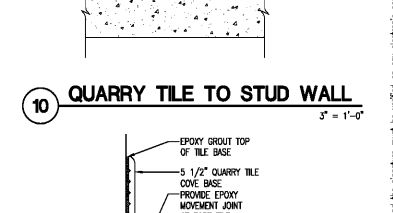
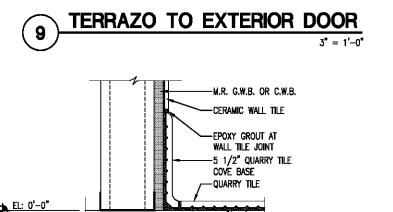
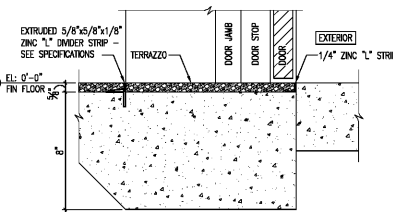
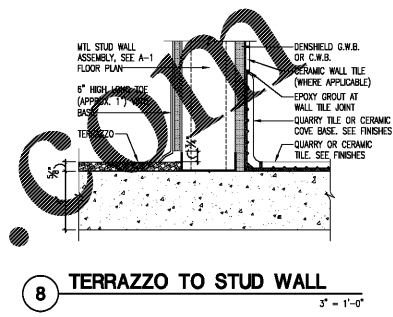


FLOOR FINISH LEGEND

- QUARRY AND CERAMIC TILE - SEE NOTE BELOW
- CONCRETE WITH HARDENER - SMOOTH FINISH
- CONCRETE AND FLOOR FINISH AS PER NUMBER BELOW
- TERRAZZO - SEE SPECIFICATIONS FOR SELECTION
- 1 NOT USED
- 2A CARPET TYPE I - OVER TERRAZZO
- 3 CARPET TYPE II
- 11-13 FLOOR TILE - QUARRY 011 ABRASIVE CHINA TILE, 6" SQ. UNLESS NOTED
- 14 FLOOR TILE - QUARRY 011 CHINA TILE, 6" SQ. UNLESS NOTED
- 15 FLOOR TILE - SASSAUOULI WALK DARK
- 20 VCT - 12"x24"x1/8" HINCHER STRIP FINISHED TILES



PUBLIC PROTOTYPE BASIS OF DESIGN
20M
 EXPANDED RECEIVED: 09.14.18
 CORPORATE OFFICES, FACILITIES DESIGN
 BOX 407, LAKELAND, FL 33802
 (863) 680-2255
 PHYSICAL ADDRESS:
 3300 AIRPORT BL., LAKELAND, FL 33811
Publix
 SUPER MARKETS
 FISHER AND ASSOCIATES, L.L.C.
 ARCHITECTS
 PLANNERS
 INTERIOR DESIGNERS
 285 BELLEAIR RD., CLEARWATER, FL 34714 727/464408
FLOOR FINISH PLAN
EAST COBB PUBLIX - #1745
 EAST COBB CROSSING SHOPPING CENTER
 ROSEWELL ROAD
 MARIETTA, GA 30062
 RELEASED FOR:
 BID
 PERMIT 07/16/20
 CONSTR.
 REVISIONS:
 STATE OF GEORGIA
 WILLIAM JOE FISHER, AIA
 REGISTERED ARCHITECT
 WILLIAM JOE FISHER
 ARCHITECT 9826
A2.2
 Issue Date: 04-01-20
 Project No: 220006